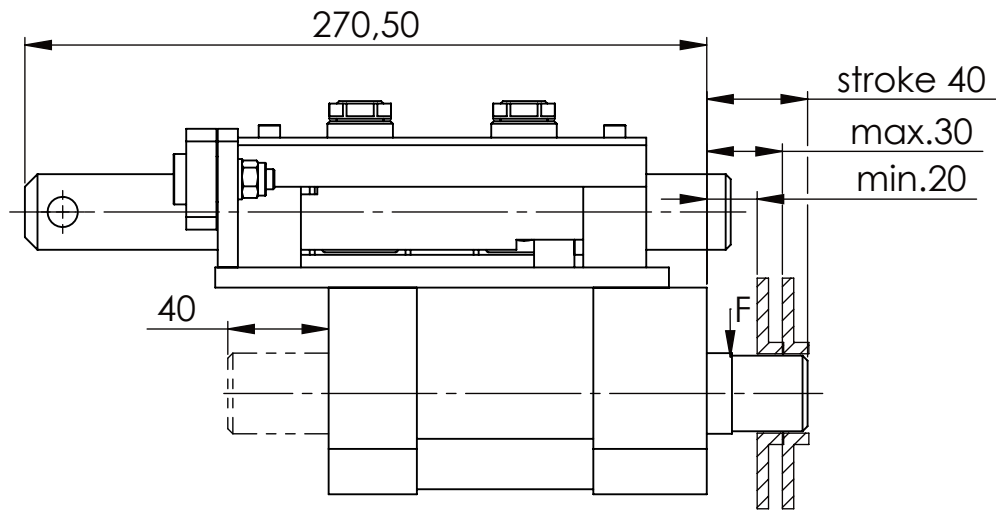
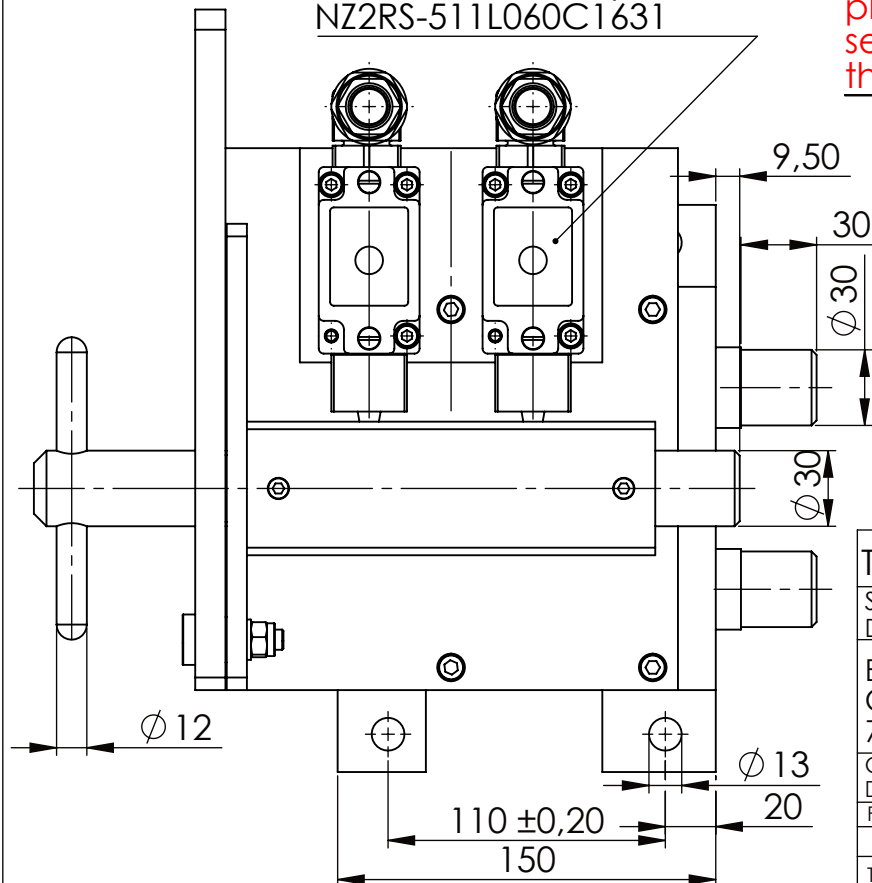
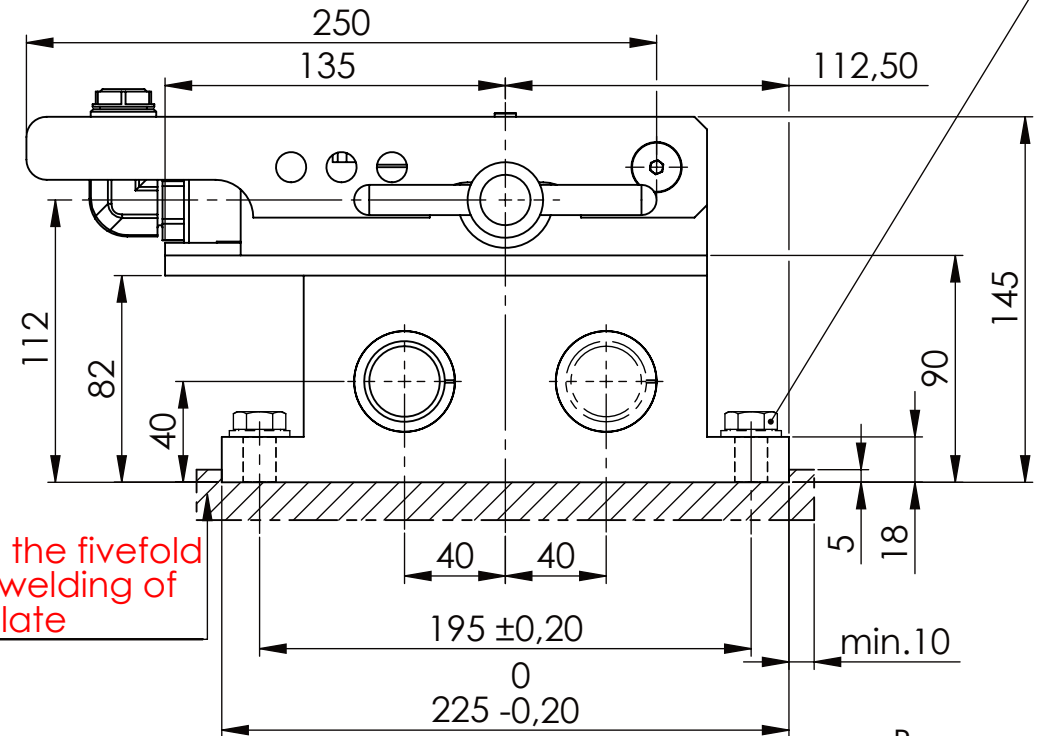


Hexagon Screw DIN 931/DIN EN ISO 4014-M12x35- 10.9, Ma=37Nm,
Washer DIN 125/DIN EN ISO 7089 -A13, retain with Loctite or similar



Fa.Euchner, safety switch,
NZ2RS-511L060C1631

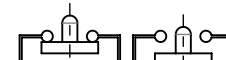
please observe the fivefold security during welding of the Retaining plate



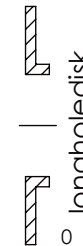
asynchronous
switching



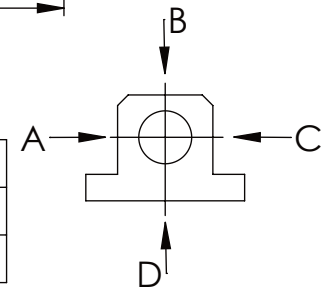
locked



unlocked



	A B C D
F all.	10.000 N
under static load	



TYPE OF DOKUMENT: DATA SHEET

SAFETY NOTE

DIN ISO 16016:2007-12

Buhl Maschinenbau e.K.
Carl-Zeiss-Str. 2
71065 Sindelfingen

GENERAL TOLERANCE
DIN ISO 2768 m-K

FROM		6	30	120	400	1000	2000
TO	6	30	120	400	1000	2000	4000
TOL.±	0.1	0.2	0.3	0.5	0.8	1.2	2.0

Buhl Maschinenbau e.K.
Sindelfingen

BUHL

WEIGHT [KG]: 23.20

PROJECTION 

DESIGNATION

SAFETY LOCKING

ADDITIONAL DESIGNATION

SA 30HT

DRAWING-NO.:

05-SA 30 HT 01-03

SHEET-
FORMAT
DINA4

SCALE
1:3

REV.
0