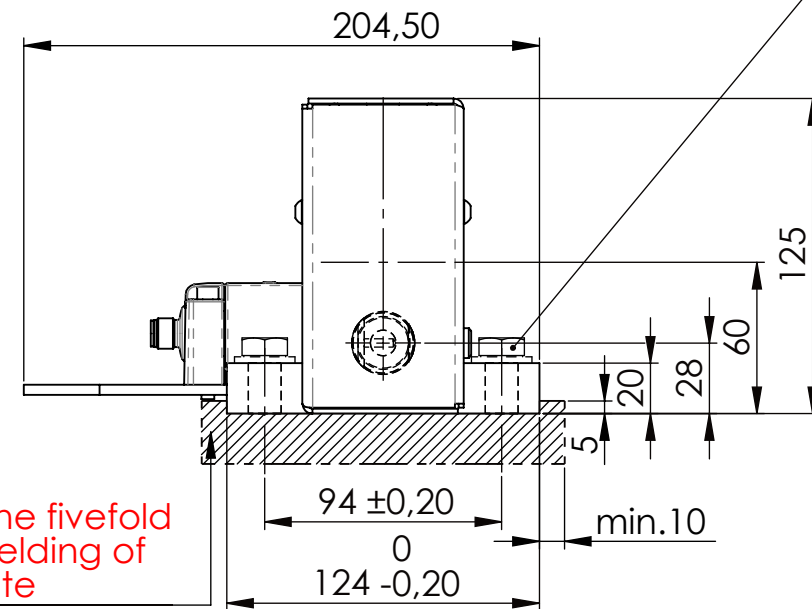


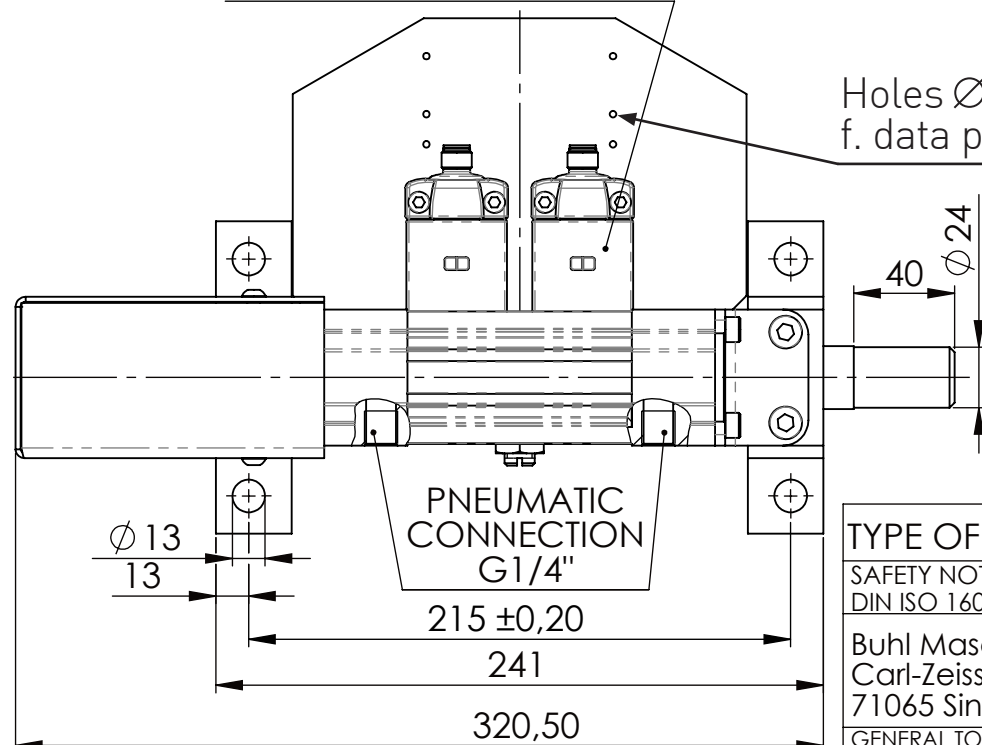
Hexagon Screw DIN 931/DIN EN ISO 4014-M12x40- 8.8, Ma=40Nm,
Washer DIN 125/DIN EN ISO 7089 -A13, retain with Loctite or similar



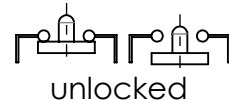
Fa. Euchner, safety switch,
CES-AP-C01-AH-SB-111145

please observe the fivefold
security during welding of
the Retaining plate

Holes Ø 2,6 (each 3 x)
f. data plate

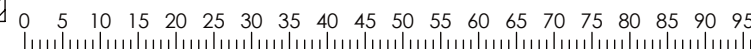
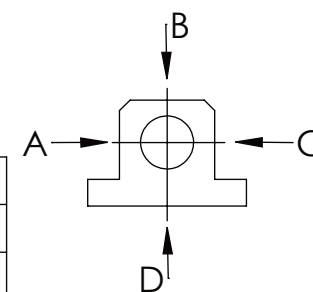


asynchronous
switching



longholedisk

	A	B	C	D
F all.	3.000 N			
under static load				



*To control the safety locking out,
use a 5/2 way valve.*

TYPE OF DOKUMENT: DATA SHEET

WEIGHT [KG]: 7.37

PROJECTION

SAFETY NOTE
DIN ISO 16016:2007-12

Date

Name

DESIGNATION

SHEET-
FORMAT
DINA4

Buhl Maschinenbau e.K.
Carl-Zeiss-Str. 2
71065 Sindelfingen

DRAW.

06.07.23

G.Velleuer

SAFETY LOCKING

APP.

06.07.23

W.Buhl

ADDITIONAL DESIGNATION

SCALE

GENERAL TOLERANCE
DIN ISO 2768 m-K

BUHL

SA 25P

1:3

FROM	6	30	120	400	1000	2000
TO	6	30	120	400	1000	2000
TOL.±	0.1	0.2	0.3	0.5	0.8	1.2

BUHL

DRAWING-NO.:

REV.

05 SA25P 02-05 U

1