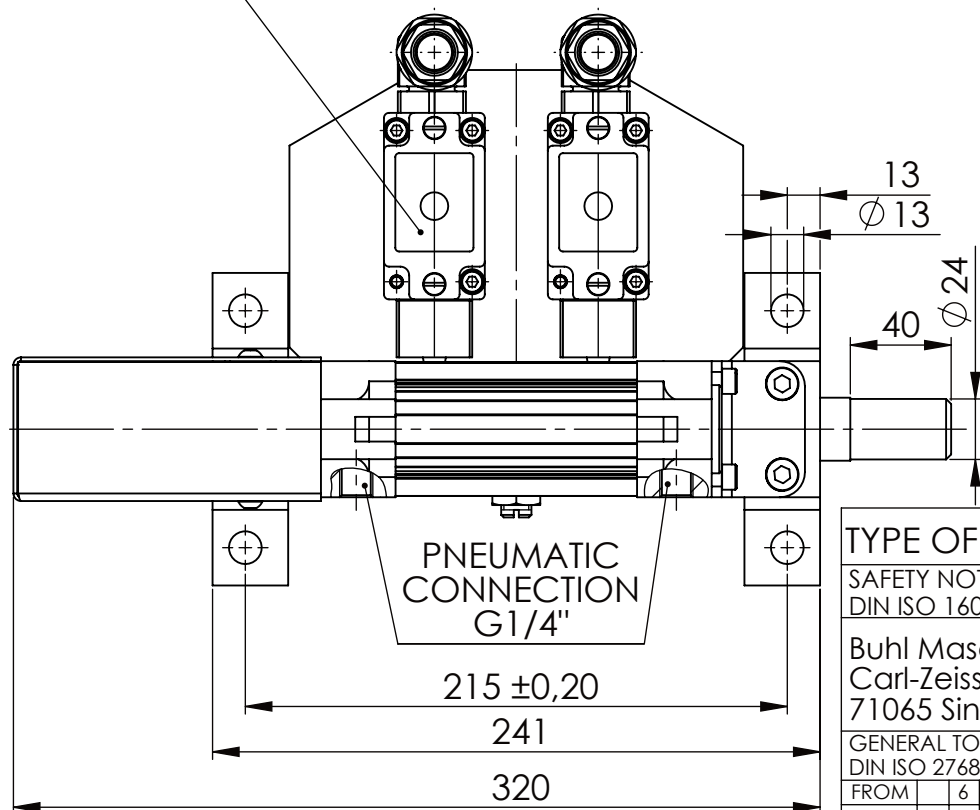
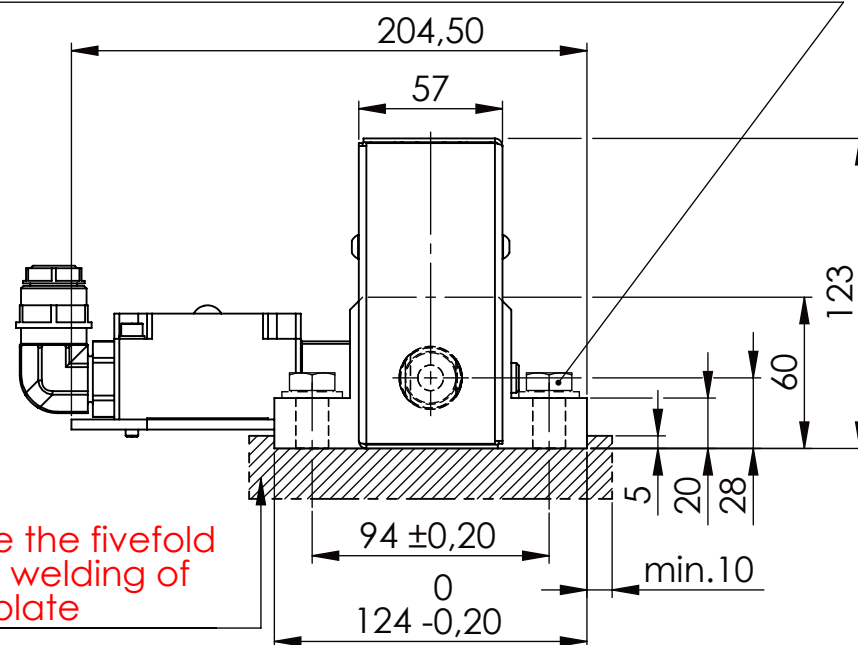


Fa.Euchner, safety switch,
NZ2RS-511L060C1631



Hexagon Screw DIN 931/DIN EN ISO 4014-M12x40- 8.8, Ma=40Nm,
Washer DIN 125/DIN EN ISO 7089 -A13, retain with Loctite or similar



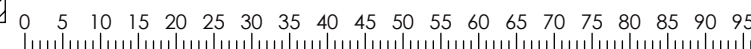
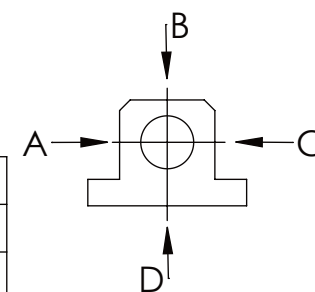
please observe the fivefold
security during welding of
the Retaining plate

asynchronous
switching



longholedisk

	A	B	C	D
F all.	3.000 N			
under static load				



TYPE OF DOKUMENT: DATA SHEET

WEIGHT [KG]: 7.35

PROJECTION

SAFETY NOTE
DIN ISO 16016:2007-12

Buhl Maschinenbau e.K.
Carl-Zeiss-Str. 2
71065 Sindelfingen

	Date	Name
DRAW.	14.06.17	G.Velleuer
APP.	14.06.17	W.Buhl

DESIGNATION

SAFETY LOCKING

ADDITIONAL DESIGNATION

SA 25P

SHEET-FORMAT

DINA4

SCALE

1:3

GENERAL TOLERANCE
DIN ISO 2768 m-K

FROM	6	30	120	400	1000	2000
TO	6	30	120	400	1000	2000
TOL.±	0.1	0.2	0.3	0.5	0.8	1.2
						2.0

Buhl Maschinenbau e.K.
Sindelfingen

BUHL

DRAWING-NO.:
05-SA 25 P 02-05

REV.

0