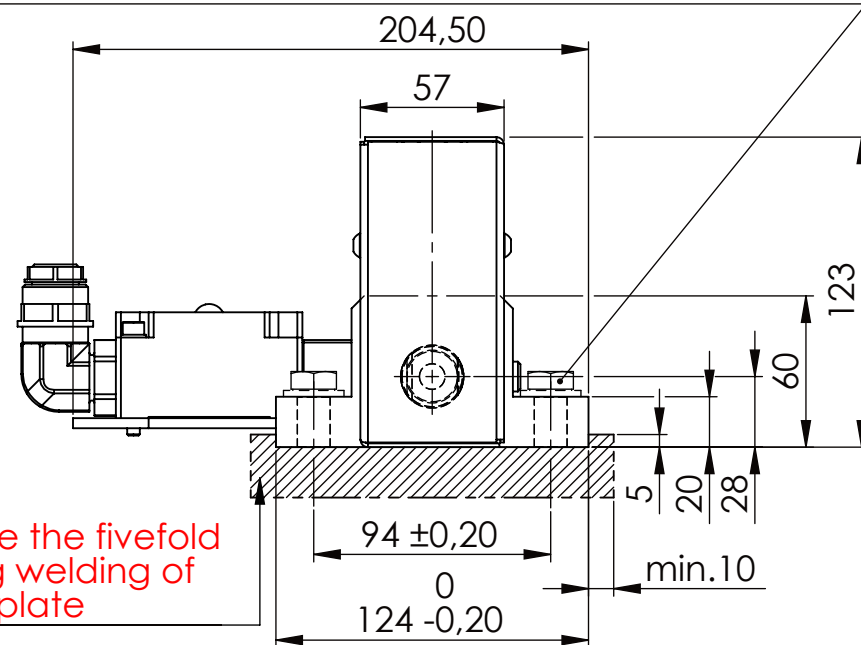
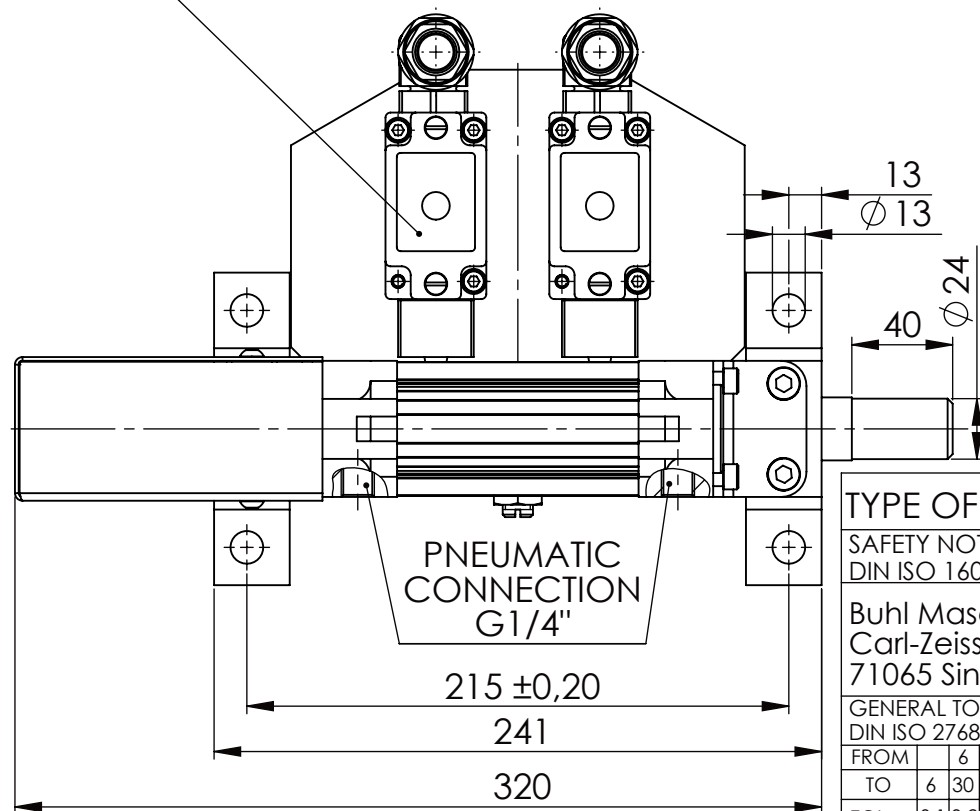


Hexagon Screw DIN 931/DIN EN ISO 4014-M12x40- 8.8, Ma=40Nm,
Washer DIN 125/DIN EN ISO 7089 -A13, retain with Loctite or similar



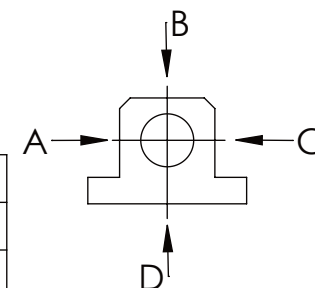
Fa.Euchner, safety switch,
NZ2RS-511L060C1631



asynchronous
switching



	A	B	C	D
F all.	3.000 N			
under static load				



TYPE OF DOKUMENT: DATA SHEET

WEIGHT [KG]: 7.35

PROJECTION

SAFETY NOTE
DIN ISO 16016:2007-12

Date

Name

DESIGNATION

SHEET-
FORMAT
DINA4

Buhl Maschinenbau e.K.
Carl-Zeiss-Str. 2
71065 Sindelfingen

DRAW.

14.06.17

G.Velleuer

SAFETY LOCKING

APP.

14.06.17

W.Buhl

ADDITIONAL DESIGNATION

SCALE

GENERAL TOLERANCE
DIN ISO 2768 m-K

Buhl Maschinenbau e.K.
Sindelfingen

BUHL

SA 25P

1:3

DRAWING-NO.:

REV.

05-SA 25 P 02-03

0

FROM		6	30	120	400	1000	2000
TO	6	30	120	400	1000	2000	4000
TOL.±	0.1	0.2	0.3	0.5	0.8	1.2	2.0