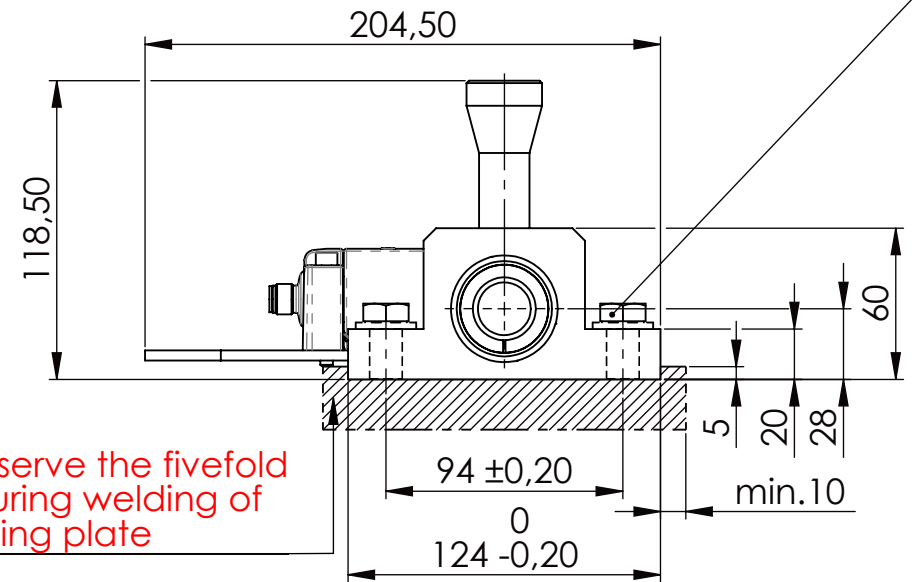
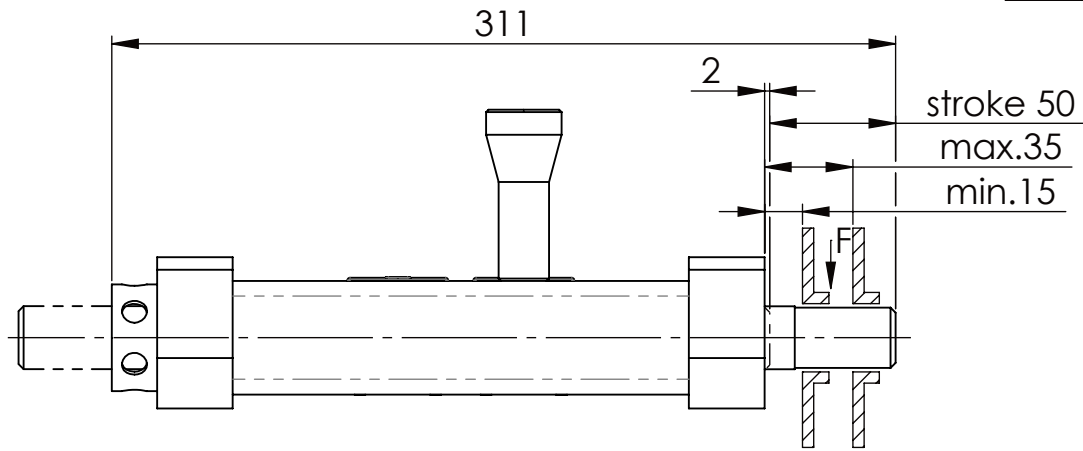
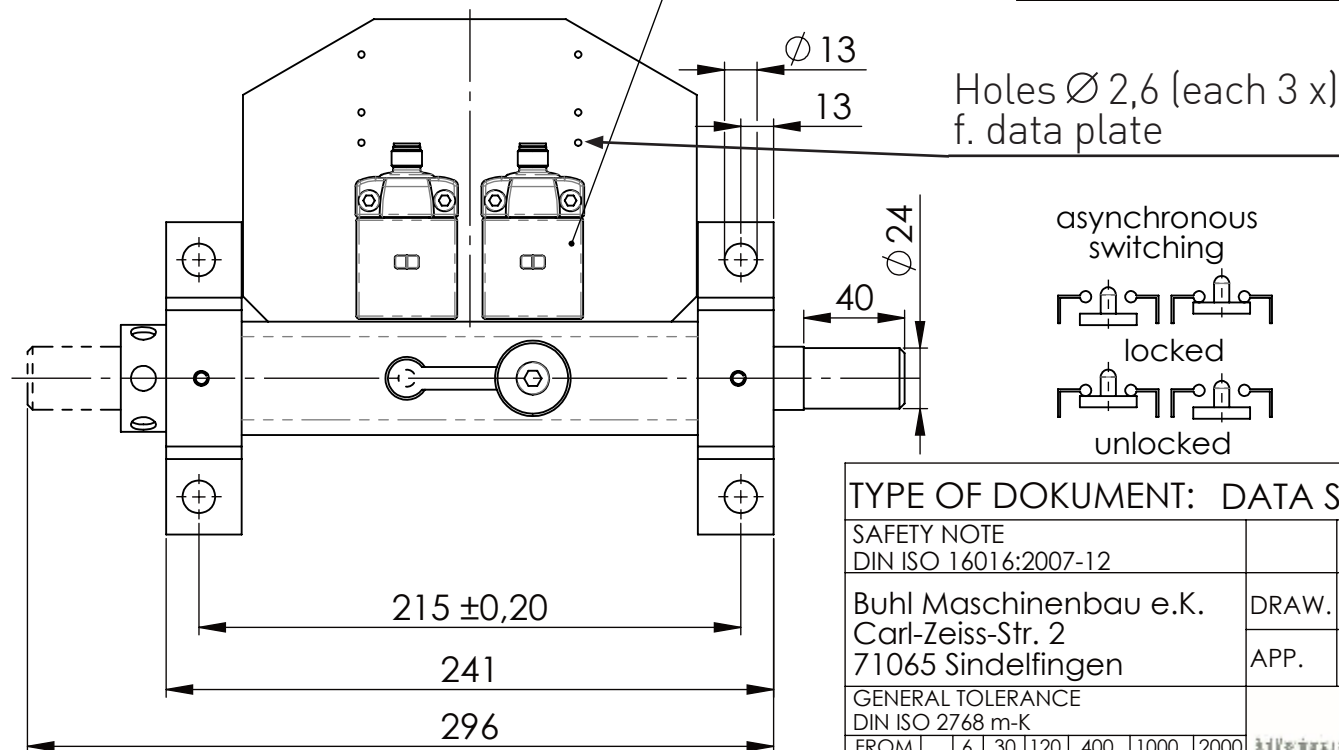


Hexagon Screw DIN 931/DIN EN ISO 4014-M12x40- 8.8, Ma=40Nm,
Washer DIN 125/DIN EN ISO 7089 -A13, retain with Loctite or similar

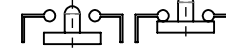


Fa. Euchner, safety switch,
CES-AP-C01-AH-SB-111145

please observe the fivefold
security during welding of
the Retaining plate



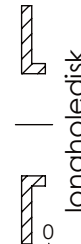
asynchronous
switching



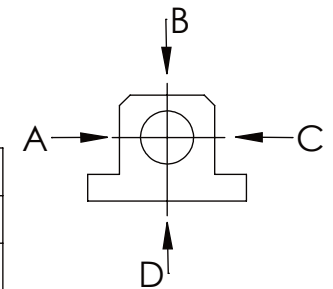
locked



unlocked



A B C D
F all. 3.000 N
under static load



TYPE OF DOKUMENT: DATA SHEET

WEIGHT [KG]: 5.05

PROJECTION

SAFETY NOTE
DIN ISO 16016:2007-12

Buhl Maschinenbau e.K.
Carl-Zeiss-Str. 2
71065 Sindelfingen

	Date	Name
DRAW.	06.07.23	G.Velleuer
APP.	06.07.23	W.Buhl

DESIGNATION

SAFETY LOCKING

ADDITIONAL DESIGNATION

SA 25H

DRAWING-NO.:
05 SA25H 02-03 U

SHEET-FORMAT
DINA4

SCALE
1:3

REV.
1

GENERAL TOLERANCE DIN ISO 2768 m-K							
FROM	6	30	120	400	1000	2000	
TO	6	30	120	400	1000	2000	4000
TOL.±	0.1	0.2	0.3	0.5	0.8	1.2	2.0

