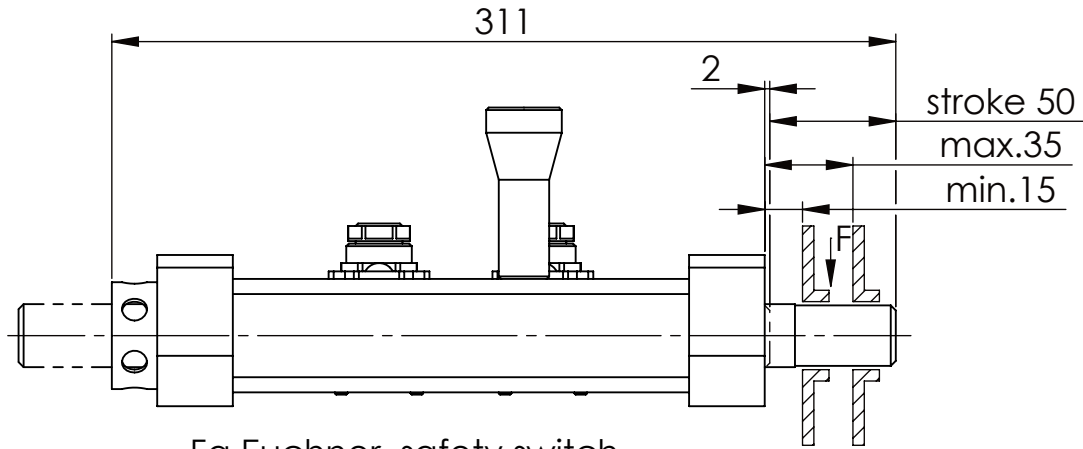
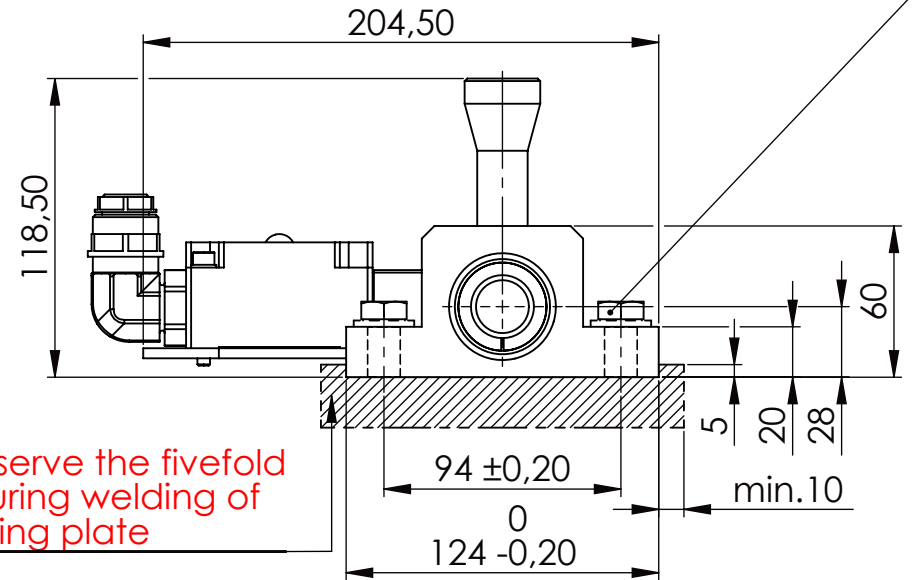


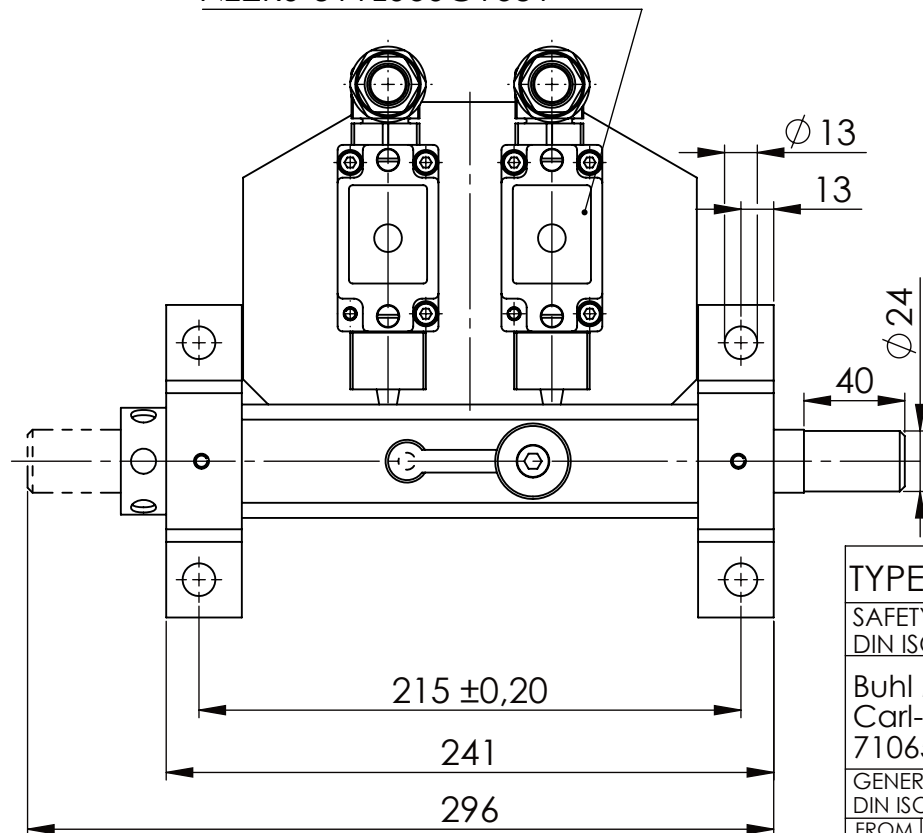
Hexagon Screw DIN 931/DIN EN ISO 4014-M12x40- 8.8, Ma=40Nm,
Washer DIN 125/DIN EN ISO 7089 -A13, retain with Loctite or similar



Fa.Euchner, safety switch,
NZ2RS-511L060C1631



please observe the fivefold
security during welding of
the Retaining plate



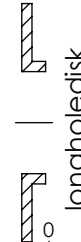
asynchronous
switching



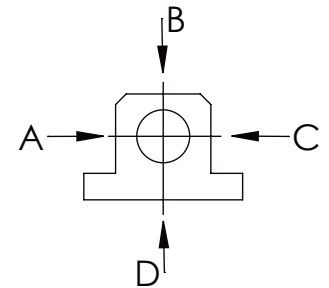
locked



unlocked



	A	B	C	D
F all.	3.000 N			
under static load				



TYPE OF DOKUMENT: DATA SHEET

WEIGHT [KG]: 5.59

PROJECTION

SAFETY NOTE

DIN ISO 16016:2007-12

Buhl Maschinenbau e.K.
Carl-Zeiss-Str. 2
71065 Sindelfingen

DRAW.

23.06.17

G.Velleuer

APP.

23.06.17

W.Buhl

GENERAL TOLERANCE
DIN ISO 2768 m-K

FROM	6	30	120	400	1000	2000
TO	6	30	120	400	1000	2000
TOL.±	0.1	0.2	0.3	0.5	0.8	1.2

Buhl Maschinenbau e.K.
Sindelfingen

BUHL

DESIGNATION

SAFETY LOCKING

ADDITIONAL DESIGNATION

SA 25H

DRAWING-NO.:

05-SA 25 H 02-03

SHEET-FORMAT

DINA4

SCALE

1:3

REV.

0