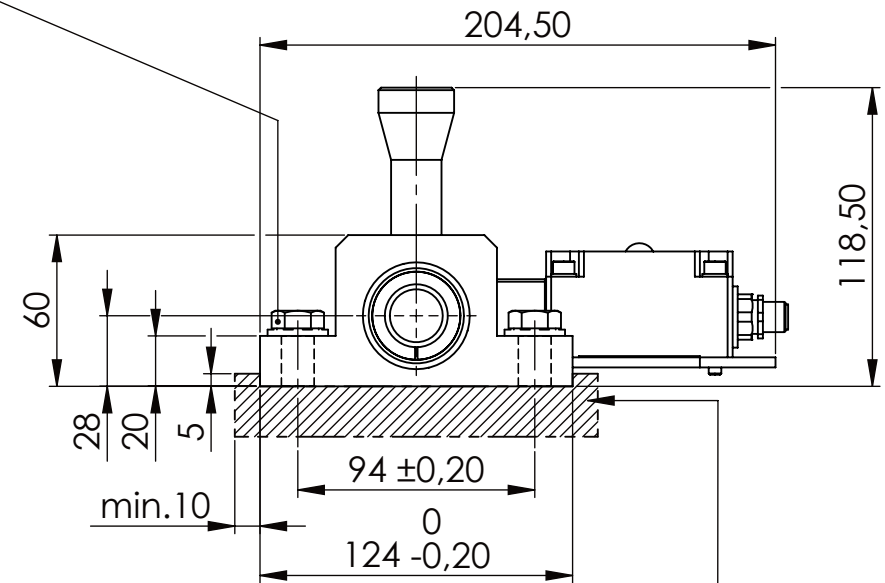
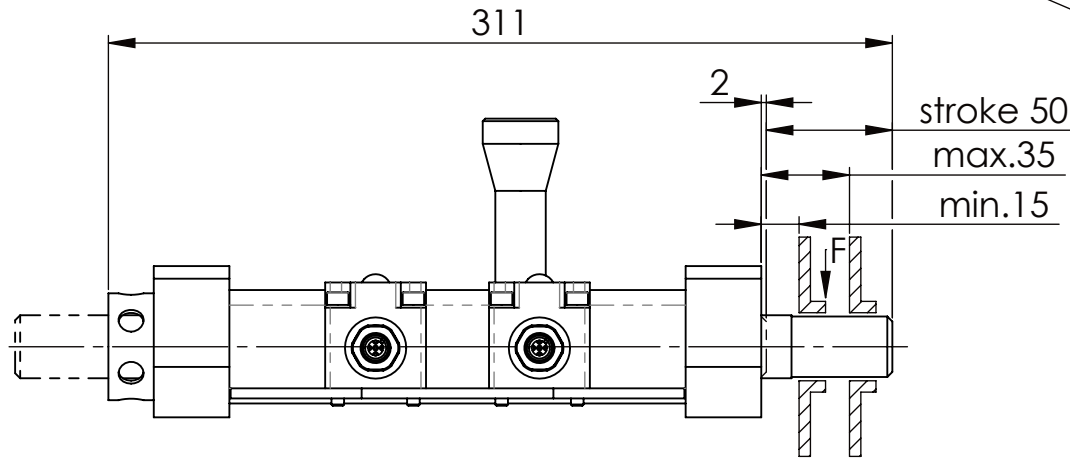
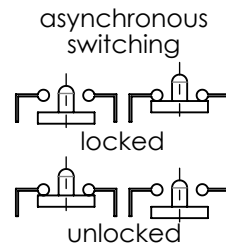
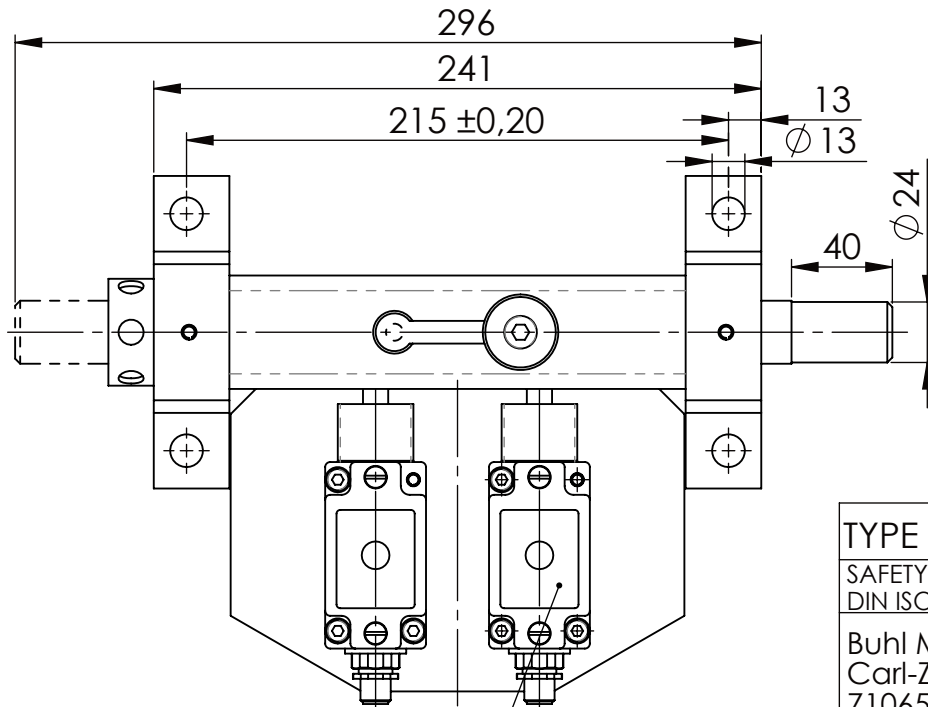


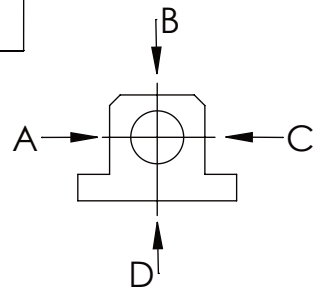
Hexagon Screw DIN 931/DIN EN ISO 4014-M12x40- 8.8, Ma=40Nm,
Washer DIN 125/DIN EN ISO 7089 -A13, retain with Loctite or similar



please observe the fivefold
security during welding of
the Retaining plate



A B C D
F all. 3.000 N
under static load



Fa.Euchner, safety switch,
NZ2RS-511SVM5L060 GE

TYPE OF DOKUMENT: DATA SHEET

SAFETY NOTE
DIN ISO 16016:2007-12

Buhl Maschinenbau e.K.
Carl-Zeiss-Str. 2
71065 Sindelfingen

GENERAL TOLERANCE
DIN ISO 2768 m-K

FROM	6	30	120	400	1000	2000
TO	6	30	120	400	1000	2000
TOL.±	0.1	0.2	0.3	0.5	0.8	1.2

Date	Name
23.06.17	G.Velleuer
23.06.17	W.Buhl



WEIGHT [KG]: 5.59

PROJECTION

DESIGNATION

SAFETY LOCKING

ADDITIONAL DESIGNATION

SA 25H

DRAWING-NO.:

05-SA 25 H 01-03M12

SHEET-FORMAT

DINA4

SCALE

1:3

REV.

0