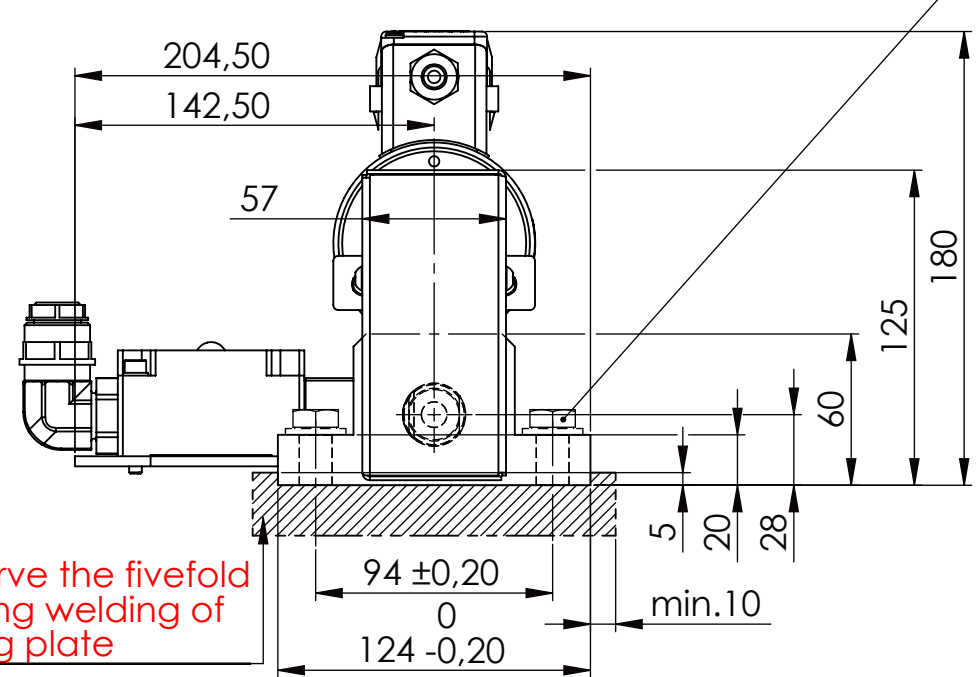
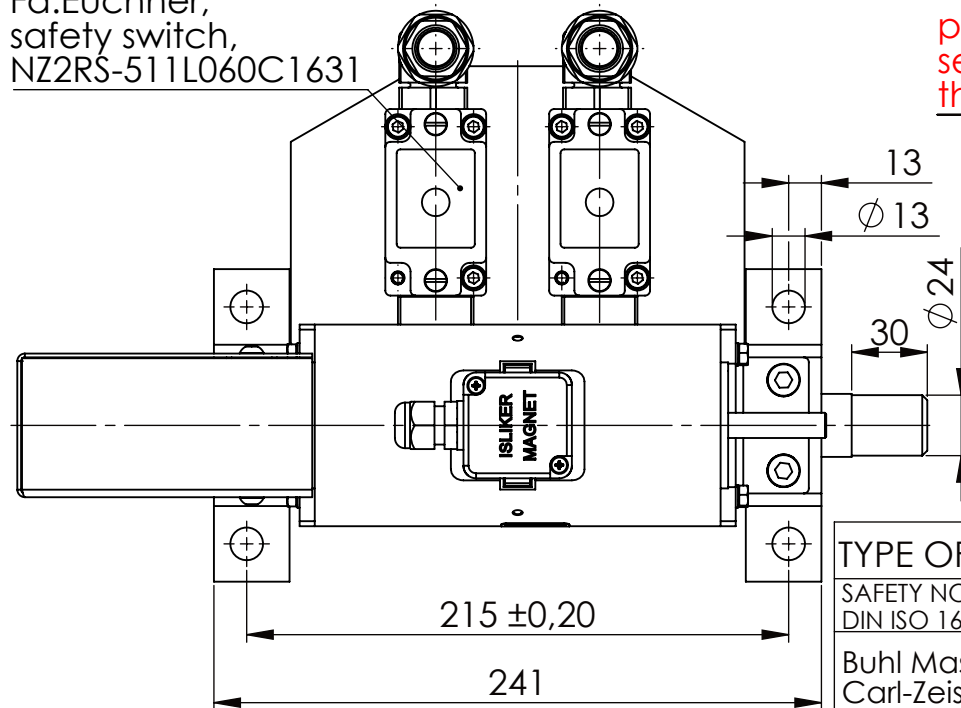


Hexagon Screw DIN 931/DIN EN ISO 4014-M12x40- 8.8, Ma=40Nm,  
Washer DIN 125/DIN EN ISO 7089 -A13, retain with Loctite or similar



Fa.Euchner,  
safety switch,  
NZ2RS-511L060C1631



please observe the fivefold  
security during welding of  
the Retaining plate

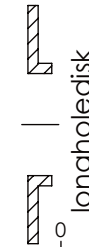
asynchronous  
switching



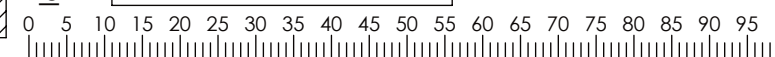
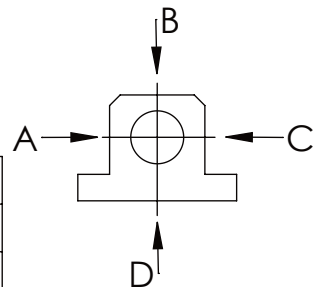
locked



unlocked



A	B	C	D
F all.	3.000 N		
under static load			



TYPE OF DOKUMENT: DATA SHEET

WEIGHT [KG]: 11.28

PROJECTION

SAFETY NOTE  
DIN ISO 16016:2007-12  
Buhl Maschinenbau e.K.  
Carl-Zeiss-Str. 2  
71065 Sindelfingen

Date	Name
DRAW. 23.06.17	G.Velleuer
APP. 23.06.17	W.Buhl

DESIGNATION	SHEET-FORMAT
SAFETY LOCKING	DINA4
ADDITIONAL DESIGNATION	SCALE
SA 25EM	1:3
DRAWING-NO.:	REV.
05-SA 25 EM 02-05	0

GENERAL TOLERANCE DIN ISO 2768 m-K						
FROM	6	30	120	400	1000	2000
TO	6	30	120	400	1000	2000
TOL.±	0.1	0.2	0.3	0.5	0.8	1.2

Buhl Maschinenbau e.K.  
Sindelfingen

**BUHL**