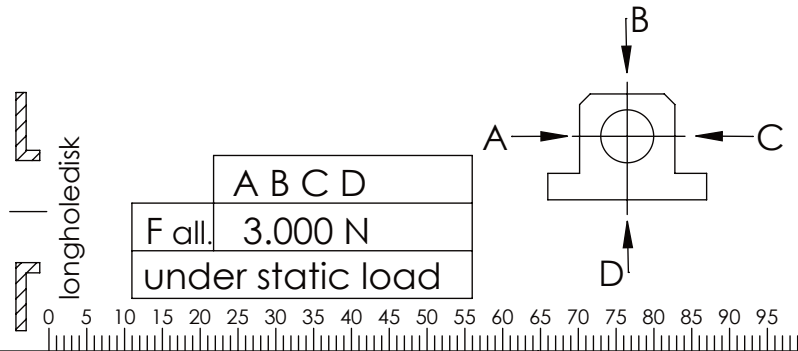
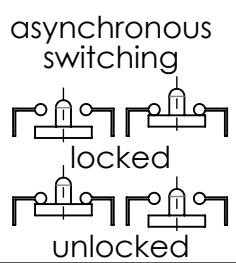
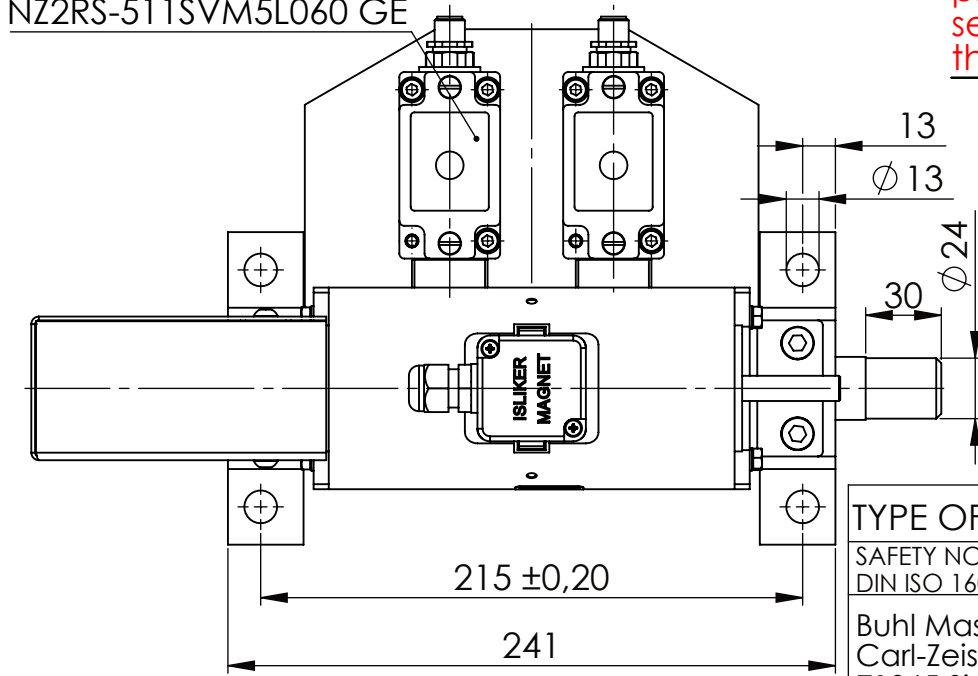
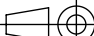


Fa.Euchner,
safety switch,
NZ2RS-511SVM5L060 GE

please observe the fivefold
security during welding of
the Retaining plate



TYPE OF DOKUMENT: DATA SHEET										WEIGHT [KG]: 11.28			PROJECTION 													
SAFETY NOTE DIN ISO 16016:2007-12						Date		Name		DESIGNATION					SHEET-FORMAT											
Buhl Maschinenbau e.K. Carl-Zeiss-Str. 2 71065 Sindelfingen					DRAW.	23.06.17		G.Velleuer		SAFETY LOCKING					DINA4											
					APP.	23.06.17		W.Buhl							SCALE											
GENERAL TOLERANCE DIN ISO 2768 m-K					<div>Buhl Maschinenbau e.K. Sindelfingen</div> <div>BUHL</div> <div></div>										ADDITIONAL DESIGNATION					1:3						
FROM															6	30	120	400	1000	2000	SA 25EM					REV.
TO															6	30	120	400	1000	2000	4000	DRAWING-NO.: 05-SA 25 EM 02-03M12				
TOL.±					0.1	0.2	0.3	0.5	0.8	1.2	2.0															