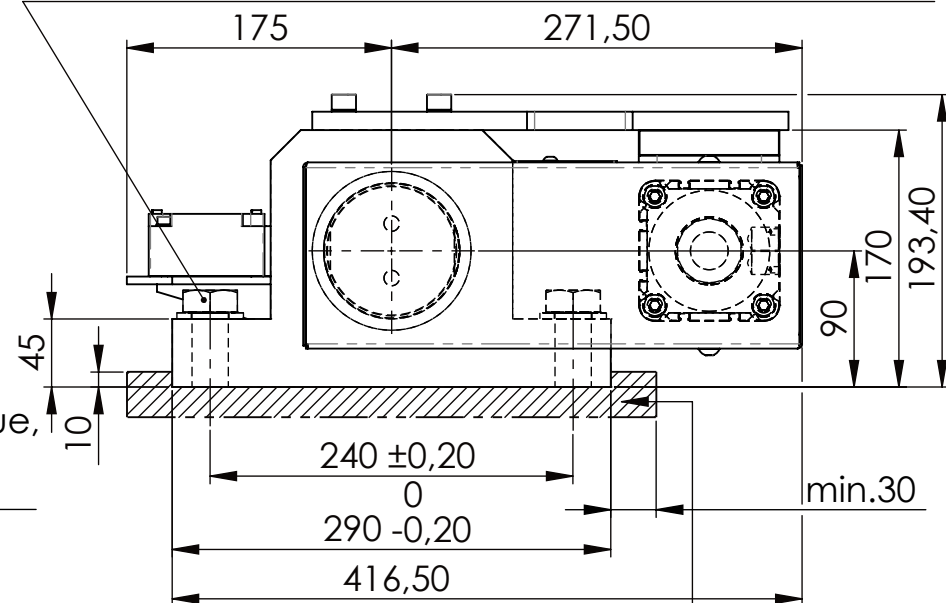
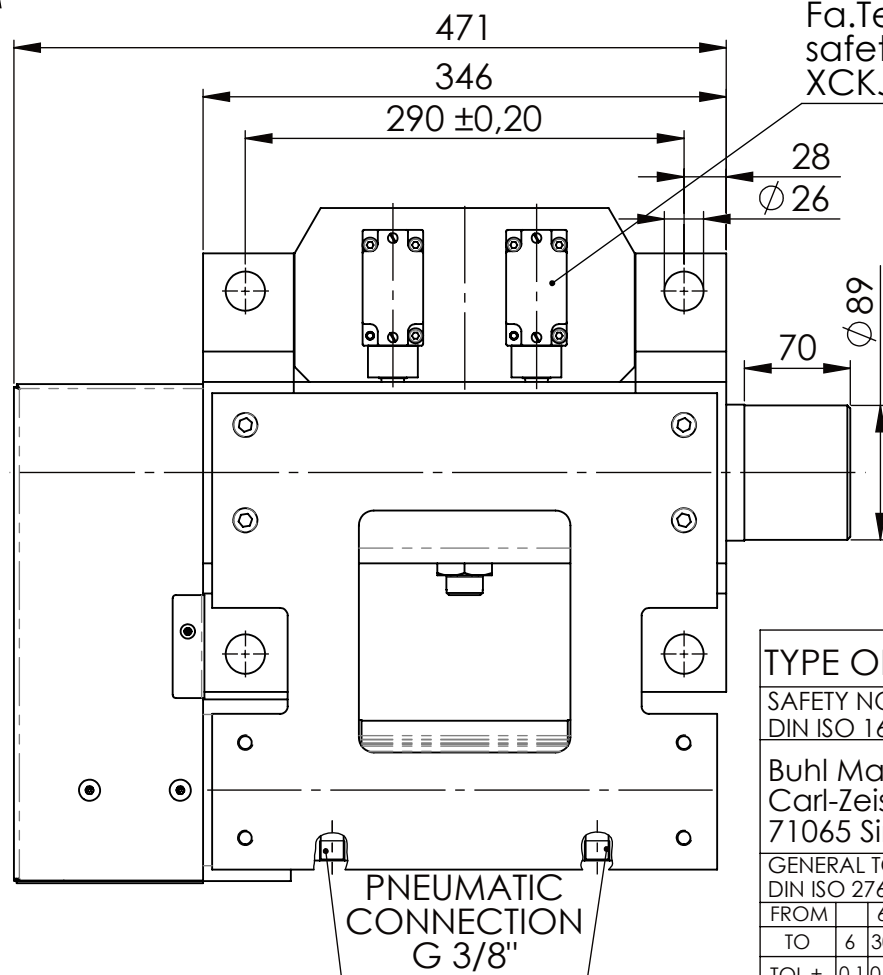


Hexagon Screw DIN 931/DIN EN ISO 4014-M24x90- 8.8,
Ma=760Nm, Washer DIN 125/DIN EN ISO 7089 -A25,
retain with Loctite or similar



please observe the fivefold
security during welding of
the Retaining plate



Fa.Telemecanique,
safety switch,
XCKJ-167-H29

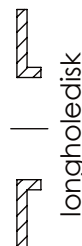
asynchronous
switching



locked

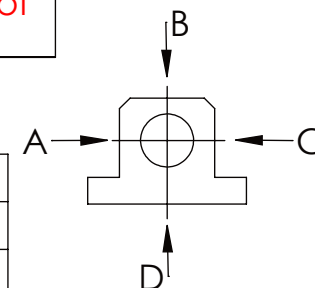


unlocked



	A	B	C	D
F all.	130.000 N	30.000 N		

under static load



TYPE OF DOKUMENT: DATA SHEET

WEIGHT [KG]: 72.46 PROJECTION

SAFETY NOTE
DIN ISO 16016:2007-12
Buhl Maschinenbau e.K.
Carl-Zeiss-Str. 2
71065 Sindelfingen

	Date	Name
DRAW.	27.11.23	G.Velleuer
APP.	27.11.23	W.Buhl

DESIGNATION
SAFETY LOCKING

SHEET-
FORMAT
DINA4

ADDITIONAL DESIGNATION
SA 90P

SCALE
1:5

DRAWING-NO.:
04-SA 90 P 04-05

REV.
1

GENERAL TOLERANCE DIN ISO 2768 m-K							
FROM	6	30	120	400	1000	2000	
TO	6	30	120	400	1000	2000	4000
TOL.±	0.1	0.2	0.3	0.5	0.8	1.2	2.0

