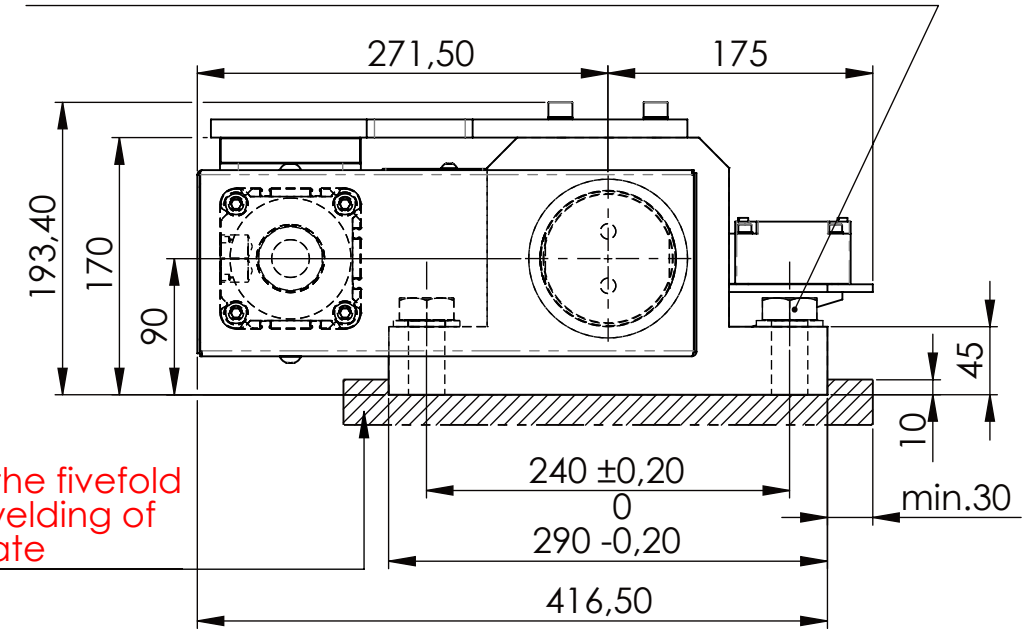
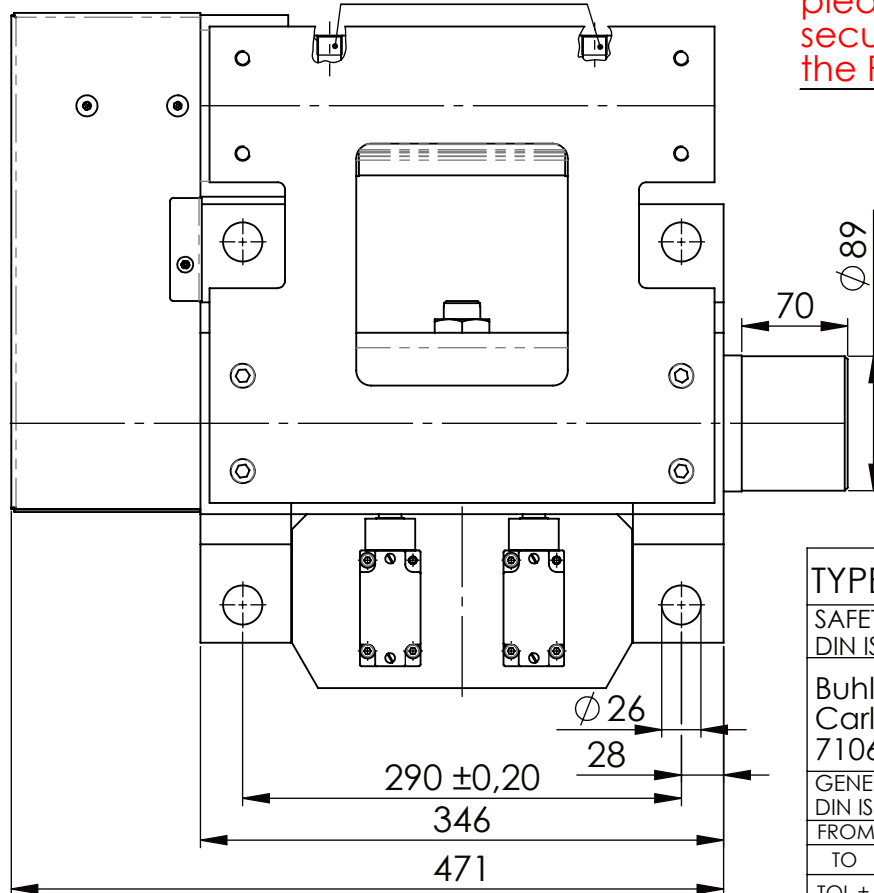


Hexagon Screw DIN 931/DIN EN ISO 4014-M24x90- 8.8,  
Ma=760Nm, Washer DIN 125/DIN EN ISO 7089 -A25,  
retain with Loctite or similar



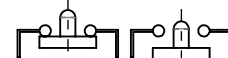
please observe the fivefold  
security during welding of  
the Retaining plate



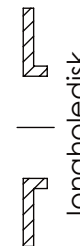
asynchronous  
switching



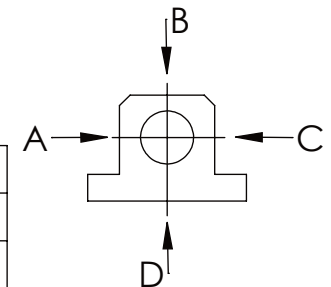
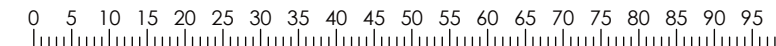
locked



unlocked



	A	B	C	D
F all.	130.000 N	30.000 N		
under static load				



TYPE OF DOKUMENT: DATA SHEET

WEIGHT [KG]: 72.46 PROJECTION

SAFETY NOTE  
DIN ISO 16016:2007-12

Buhl Maschinenbau e.K.  
Carl-Zeiss-Str. 2  
71065 Sindelfingen

GENERAL TOLERANCE  
DIN ISO 2768 m-K

FROM	6	30	120	400	1000	2000
TO	6	30	120	400	1000	2000
TOL. $\pm$	0.1	0.2	0.3	0.5	0.8	1.2

Buhl Maschinenbau e.K.  
Carl-Zeiss-Str. 2  
71065 Sindelfingen

**BUHL**

DESIGNATION

SAFETY LOCKING

ADDITIONAL DESIGNATION

SA 90P

DRAWING-NO.:

04-SA 90 P 03-03

SHEET-  
FORMAT  
DINA4

SCALE  
1:5

REV.  
1