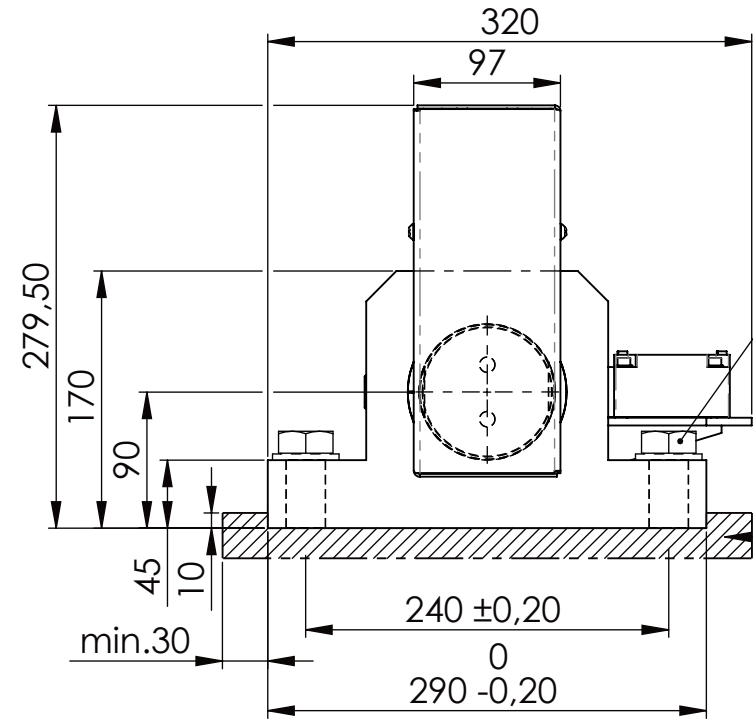
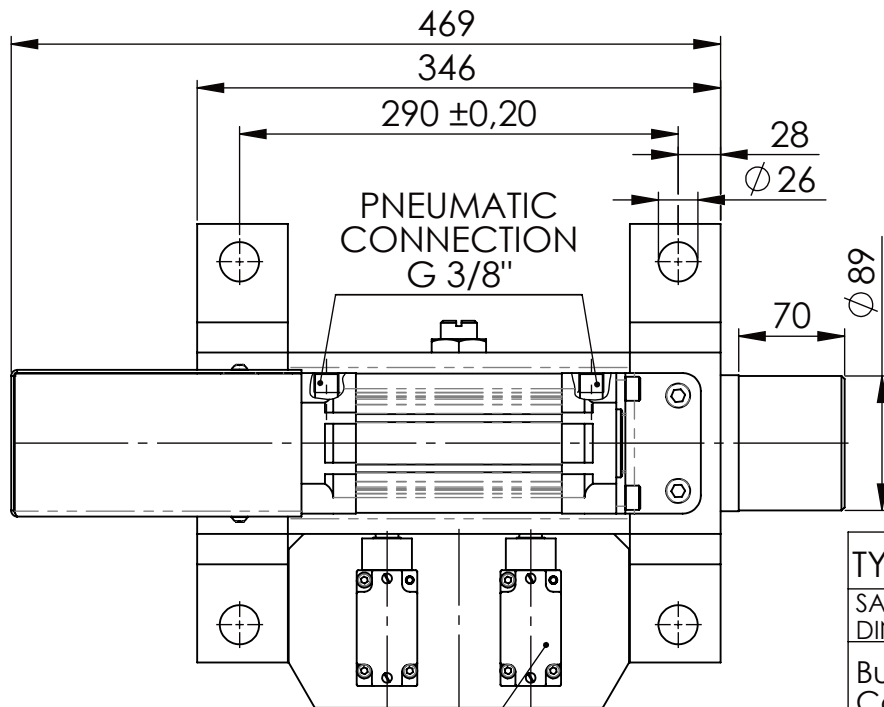
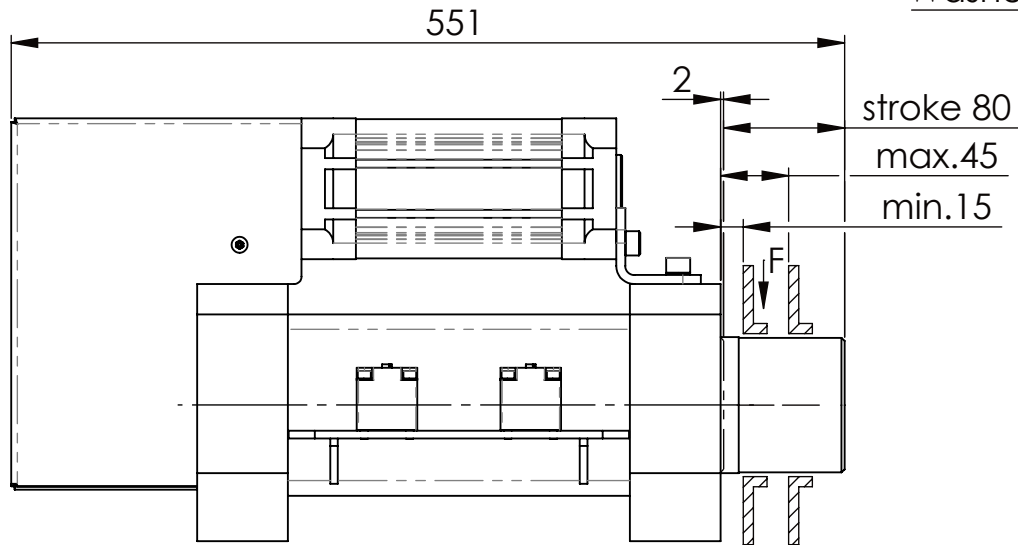
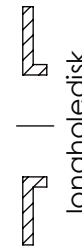
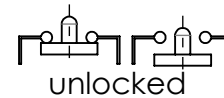


Hexagon Screw DIN 931/DIN EN ISO 4014-M24x90- 8.8, Ma=760Nm,
Washer DIN 125/DIN EN ISO 7089 -A25, retain with Loctite or similar

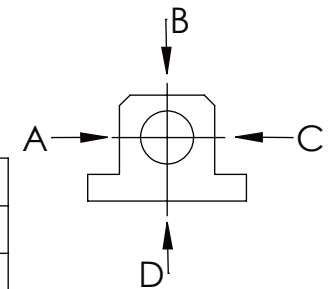


please observe the fivefold
security during welding of
the Retaining plate

asynchronous
switching



A	B	C	D
F all.	130.000 N	30.000 N	
under static load			



Fa.Telemecanique,
safety switch,
XCKJ-167-H29

TYPE OF DOKUMENT: DATA SHEET

SAFETY NOTE
DIN ISO 16016:2007-12
Buhl Maschinenbau e.K.
Carl-Zeiss-Str. 2
71065 Sindelfingen

GENERAL TOLERANCE DIN ISO 2768 m-K							
FROM	6	30	120	400	1000	2000	
TO	6	30	120	400	1000	2000	4000
TOL.±	0,1	0,2	0,3	0,5	0,8	1,2	2,0

WEIGHT [KG]: 61.60

PROJECTION

DESIGNATION
SAFETY LOCKING
ADDITIONAL DESIGNATION
SA 90P
DRAWING-NO.:
04-SA 90 P 01-03

DATE	NAME	DESIGNATION	SHEET-FORMAT
DRAW.	14.12.23	G.Velleuer	DINA4
APP.	14.12.23	W.Buhl	SCALE
			1:5
			REV.
			1

