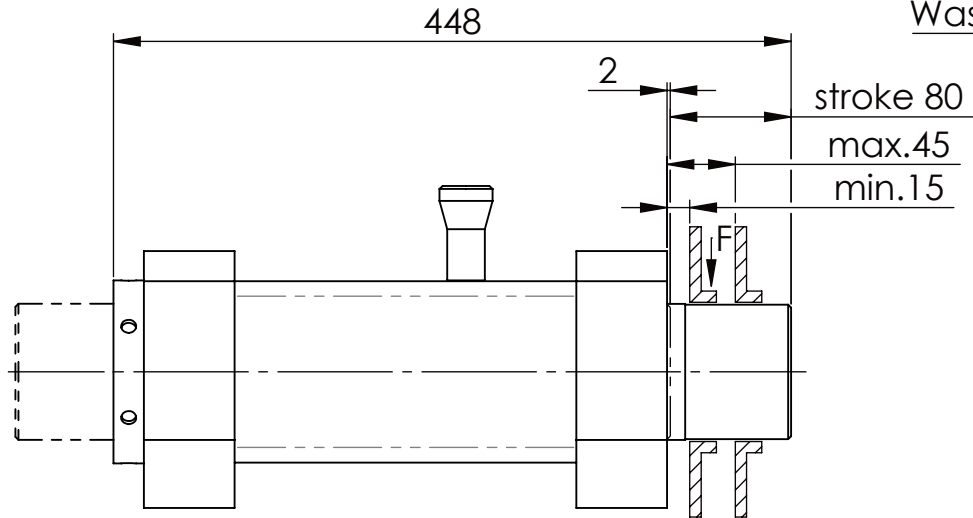
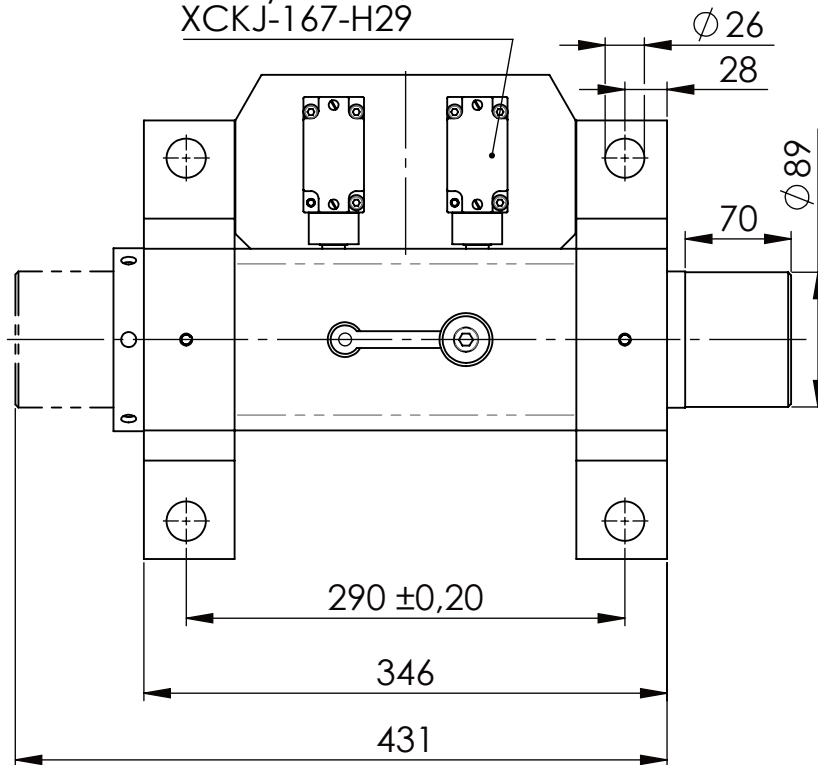
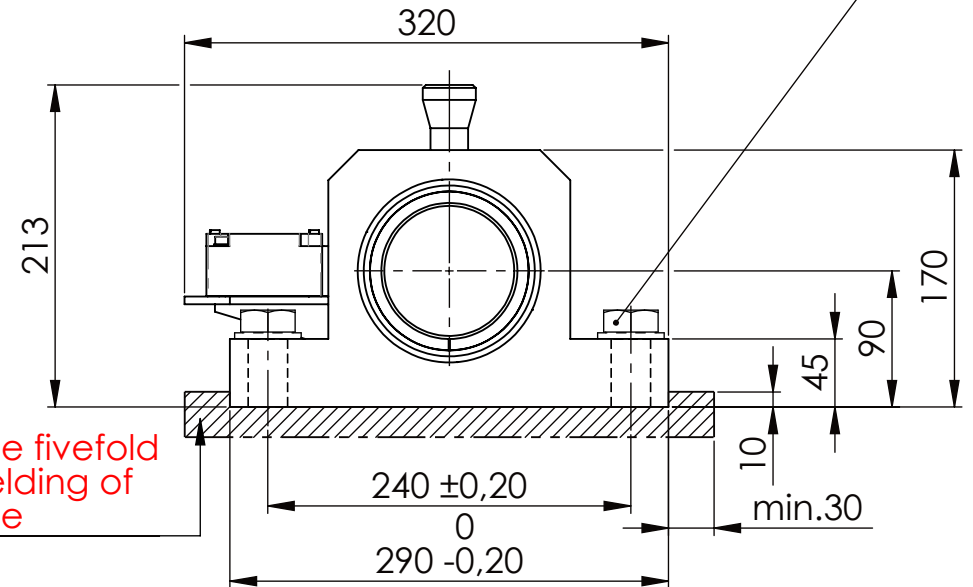


Hexagon Screw DIN 931/DIN EN ISO 4014-M24x90- 8.8, Ma=760Nm,
Washer DIN 125/DIN EN ISO 7089 -A25, retain with Loctite or similar

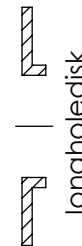
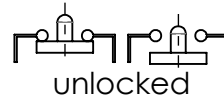


Fa. Telemecanique,
safety switch,
XCKJ-167-H29

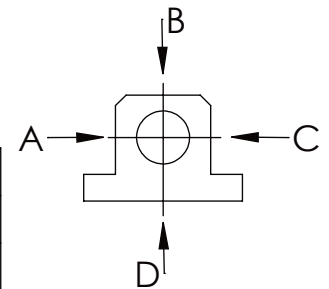
please observe the fivefold
security during welding of
the Retaining plate



asynchronous
switching



A	B	C	D
F all.	130.000 N	30.000 N	
under static load			



TYPE OF DOKUMENT: DATA SHEET

WEIGHT [KG]: 52.23

PROJECTION

SAFETY NOTE
DIN ISO 16016:2007-12

Buhl Maschinenbau e.K.
Carl-Zeiss-Str. 2
71065 Sindelfingen

	Date	Name
DRAW.	21.11.23	G.Velleuer
APP.	21.11.23	W.Buhl

DESIGNATION	SHEET-FORMAT
SAFETY LOCKING	DINA4
ADDITIONAL DESIGNATION	SCALE
SA 90H	1:5
DRAWING-NO.:	REV.
04-SA 90 H 02-03	1

GENERAL TOLERANCE DIN ISO 2768 m-K							
FROM	6	30	120	400	1000	2000	
TO	6	30	120	400	1000	2000	4000
TOL.±	0.1	0.2	0.3	0.5	0.8	1.2	2.0

