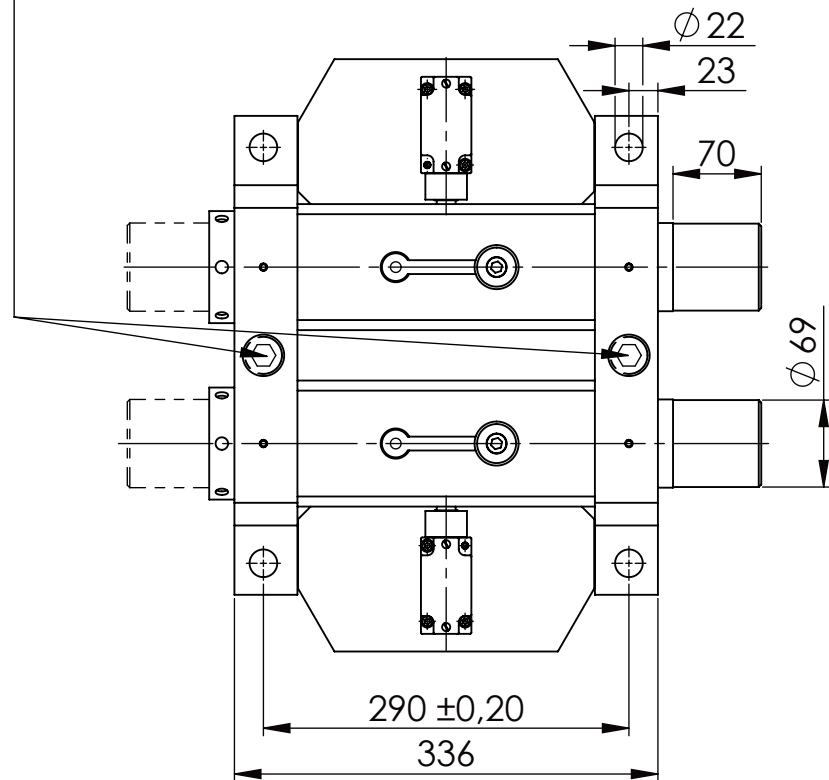
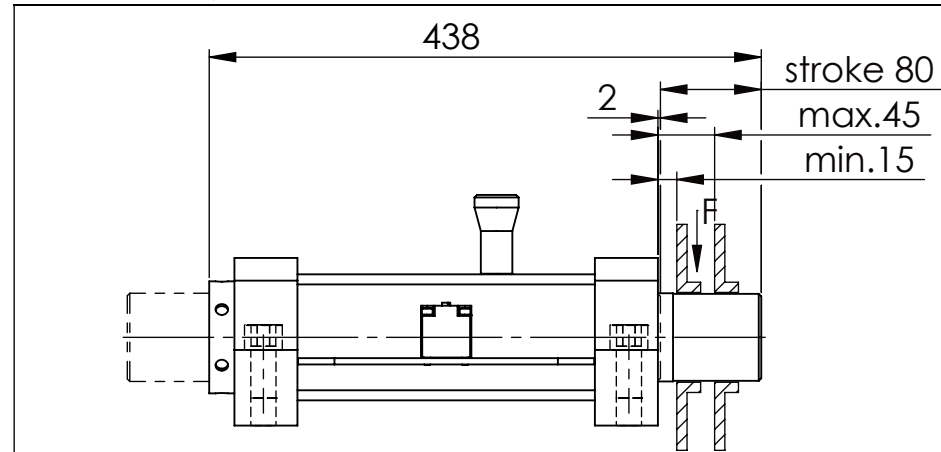
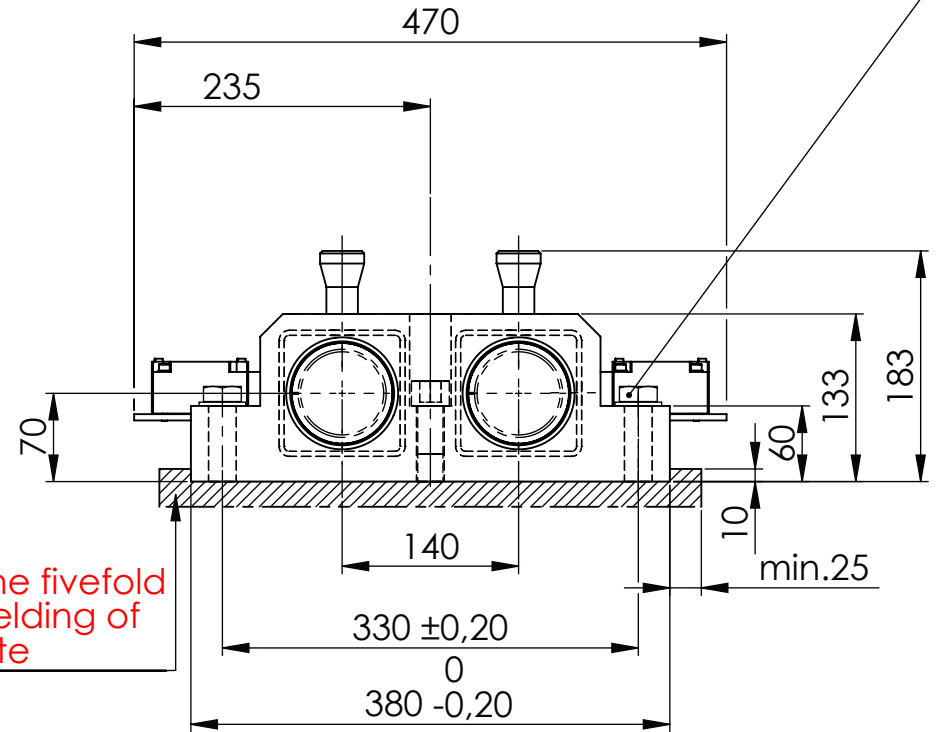


Hexagon Screw DIN 931/DIN EN ISO 4014-M20x90- 8.8, Ma=320Nm,
Washer DIN 125/DIN EN ISO 7089 -A21, retain with Loctite or similar

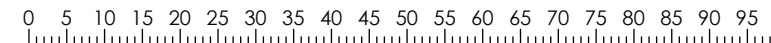
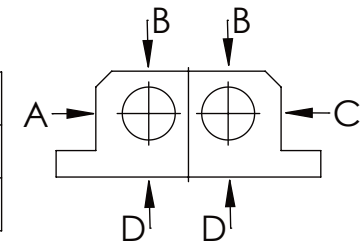
Socket Head Cap Screw DIN 912/DIN EN ISO 4762 - M20x90-8.8,
Ma=320Nm, retain with Loctite or similar



please observe the fivefold
security during welding of
the Retaining plate



A B C	D
F all. 60.000 N	17.000 N
under static load	



TYPE OF DOKUMENT: DATA SHEET

SAFETY NOTE
DIN ISO 16016:2007-12

Buhl Maschinenbau e.K.
Carl-Zeiss-Str. 2
71065 Sindelfingen

GENERAL TOLERANCE
DIN ISO 2768 m-K

FROM	6	30	120	400	1000	2000
TO	6	30	120	400	1000	2000
TOL.±	0.1	0.2	0.3	0.5	0.8	1.2

Buhl Maschinenbau e.K.
Sindelfingen

BUHL

WEIGHT [KG]: 60.66

PROJECTION

DESIGNATION

SAFETY LOCKING

ADDITIONAL DESIGNATION

SA 70HT-1S

DRAWING-NO.:

04-SA 70 HT-1S 01-03

SHEET-
FORMAT

DINA4

SCALE

1:6

REV.

0