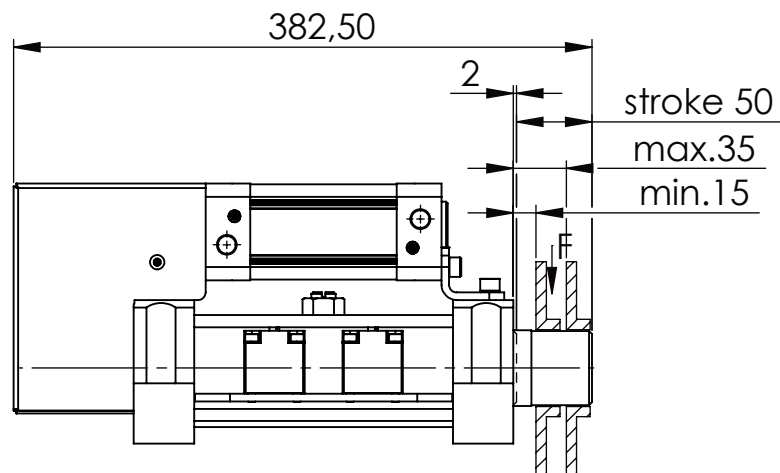
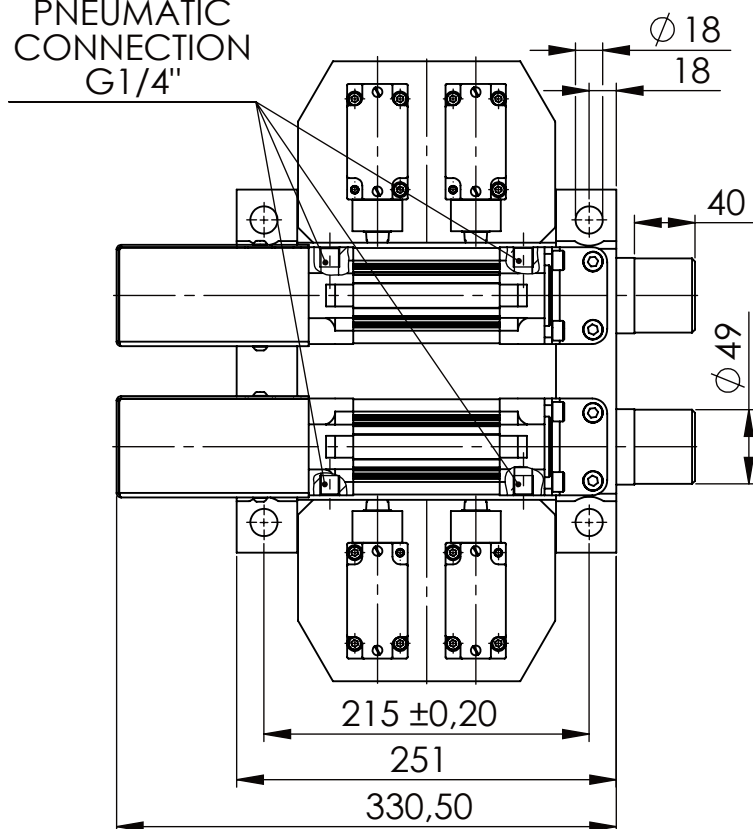


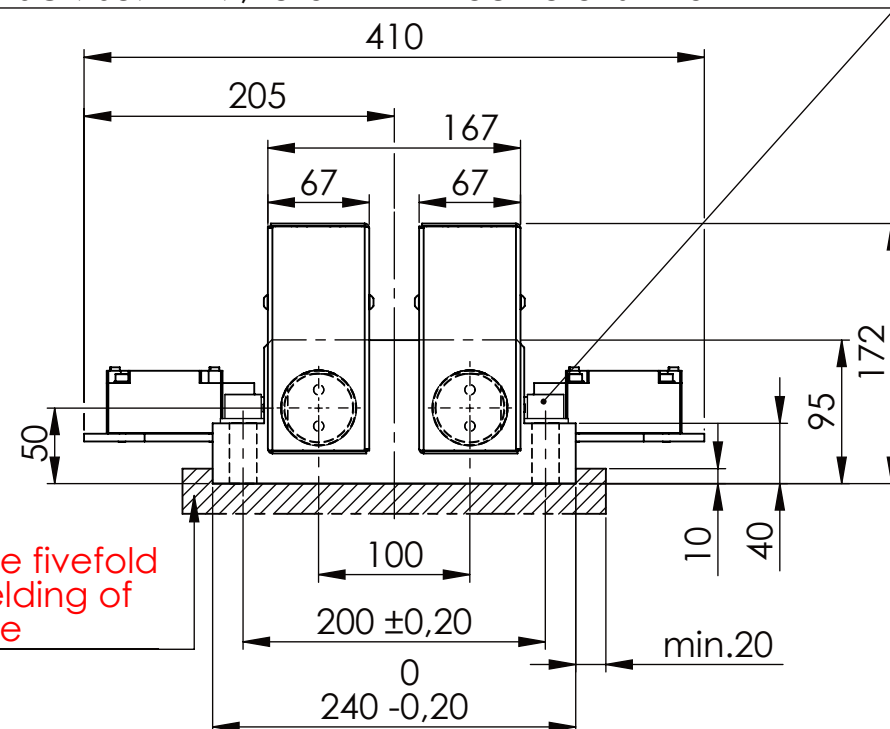
Socket Head Cap Screw DIN 912/DIN EN ISO 4762 - M16x60 - 8.8, Ma=90Nm,
Washer DIN 125/DIN EN ISO 7089 -A17, retain with Loctite or similar



PNEUMATIC
CONNECTION
G1/4"

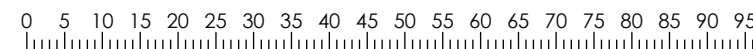
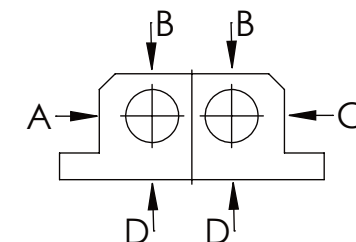


please observe the fivefold
security during welding of
the Retaining plate



longholedisk

A B C	D
F all. 22.000 N	6.185 N
under static load	



TYPE OF DOKUMENT: DATA SHEET

WEIGHT [KG]: 30.31

PROJEKTION

SAFETY NOTE
DIN ISO 16016:2007-12

Date

Name

DESIGNATION

SHEET-
FORMAT
DINA4

Buhl Maschinenbau e.K.
Carl-Zeiss-Str. 2
71065 Sindelfingen

DRAW.

29.09.15

G.Velleuer

SAFETY LOCKING

APP.

01.10.15

W.Buhl

ADDITIONAL DESIGNATION

SCALE

GENERAL TOLERANCE
DIN ISO 2768 m-K

FROM	6	30	120	400	1000	2000
TO	6	30	120	400	1000	2000
TOL.±	0.1	0.2	0.3	0.5	0.8	1.2

3rd Maschinenbau
Sindelfingen

BUHL

SA 50PT-2S

1:5

DRAWING-NO.:

REV.

04-SA 50 PT-2S 01-03

0