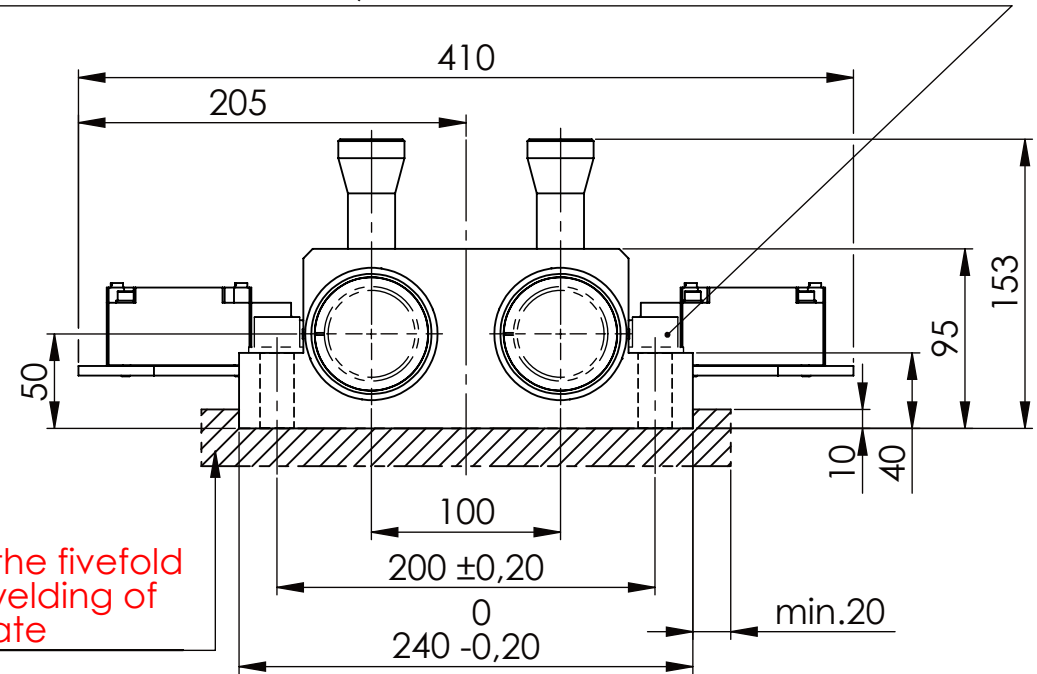
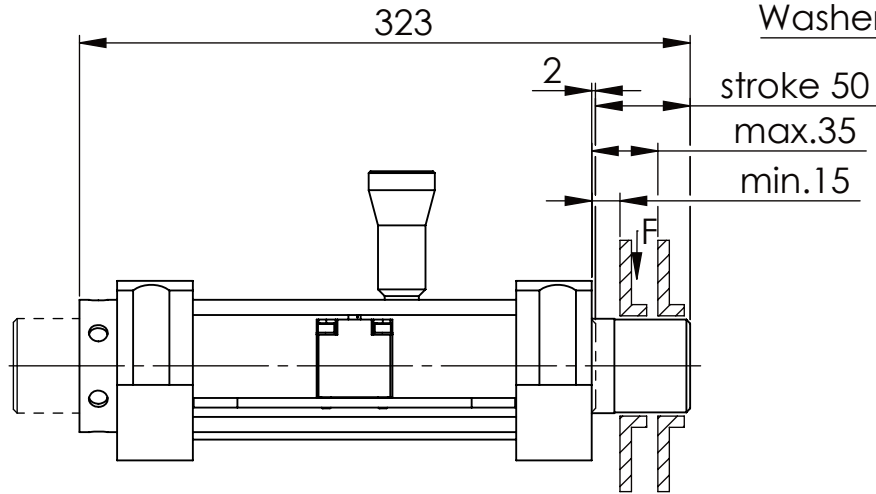
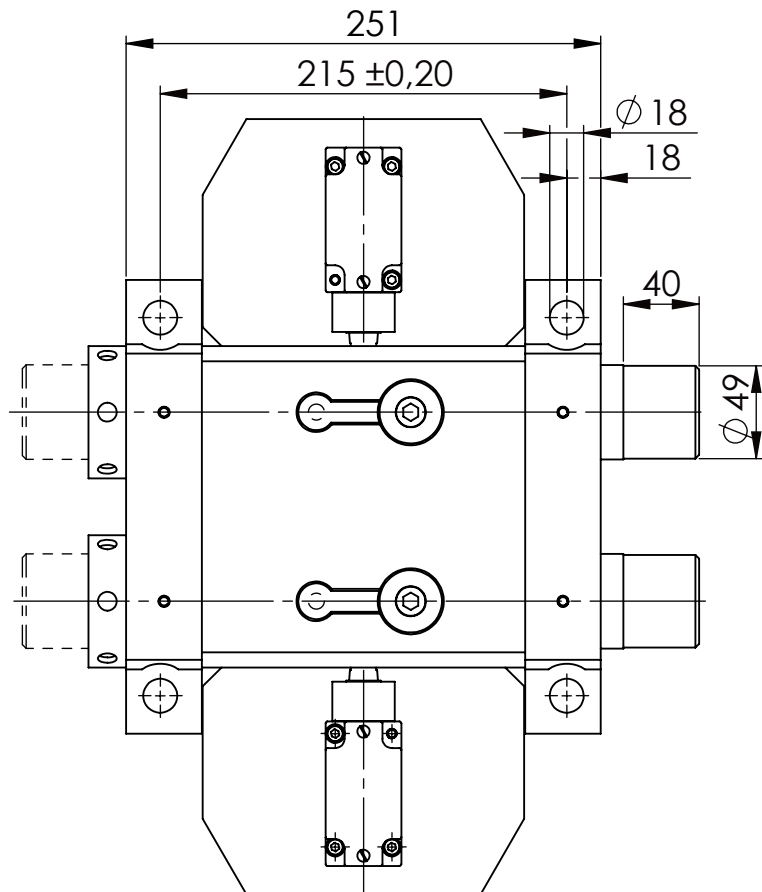


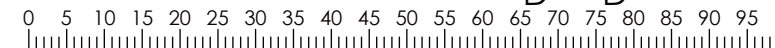
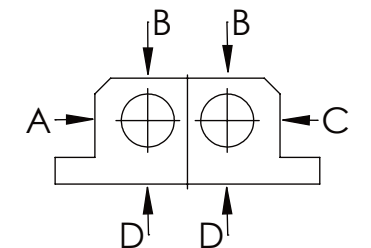
Socket Head Cap Screw DIN 912/DIN EN ISO 4762 - M16x60 - 8.8, Ma=90Nm,
Washer DIN 125/DIN EN ISO 7089 -A17, retain with Loctite or similar



please observe the fivefold
security during welding of
the Retaining plate



A B C	D
F all. 22.000 N	6.185 N
under static load	



TYPE OF DOKUMENT: DATA SHEET

WEIGHT [KG]: 23.67 PROJECTION

SAFETY NOTE
DIN ISO 16016:2007-12

Buhl Maschinenbau e.K.
Carl-Zeiss-Str. 2
71065 Sindelfingen

DRAW.

Date 29.09.15
Name G.Velleuer

APP.

01.10.15 W.Buhl

GENERAL TOLERANCE
DIN ISO 2768 m-K

FROM	6	30	120	400	1000	2000
TO	6	30	120	400	1000	2000
TOL.±	0.1	0.2	0.3	0.5	0.8	1.2

BUHL

BUHL

DESIGNATION

SAFETY LOCKING

ADDITIONAL DESIGNATION

SA 50HT-1S

DRAWING-NO.:

04-SA 50 HT-1S 01-03

SHEET-FORMAT
DINA4

SCALE
1:4

REV.
0