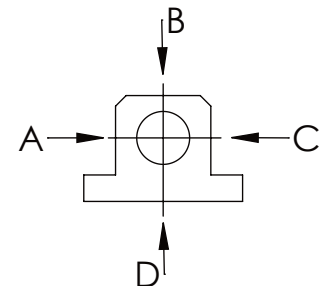



Technical drawing of a mechanical assembly (Fig. 1) showing a side view with dimensions. The drawing includes a base plate with a central slot and two side flanges. A central component is mounted on the base. Dimensions are given in millimeters. Key dimensions include: total width 245, central slot width 155, base plate width $140 \pm 0,20$, base plate thickness 10, and overall height 273. A note "Unfolding of" is present on the left side.

longholedisk

	A B C	D
F _{all.}	22.000 N	6.185 N
under static load		



WEIGHT [KG]: 24.25 PROJEKTION 

	Date	Name
DRAW.	17.02.16	G.Velleuer
APP.	19.02.16	W.Buhl

er	SAFETY LOCKING	DINA4
----	----------------	-------

SA 50EM	1.4
DRAWING NO.:	REV.

DRAWING-NO.. 04-SA 50 EM 01-03	REV.. 0
-----------------------------------	------------

GENERAL TOLERANCE DIN ISO 2768 m-K							
FROM		6	30	120	400	1000	2000
TO	6	30	120	400	1000	2000	4000
TOL.±	0.1	0.2	0.3	0.5	0.8	1.2	2.0

Buhl Maschinenbau e.K.
Sindelfingen

BUHL