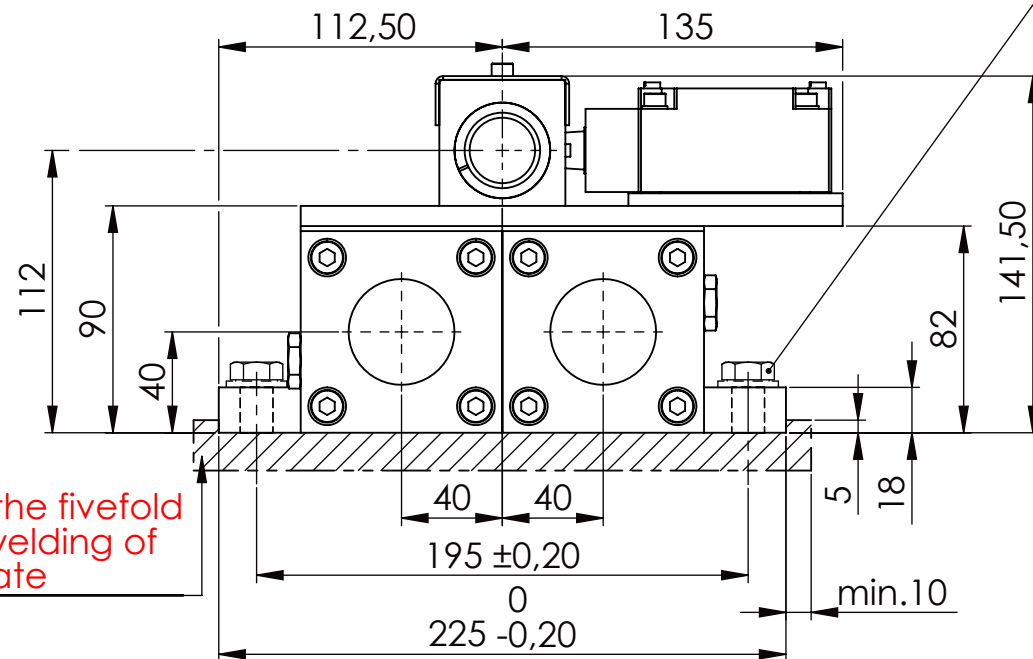


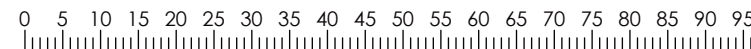
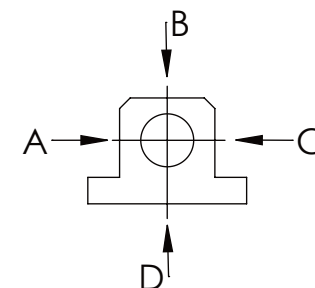
Hexagon Screw DIN 931/DIN EN ISO 4014-M12x35- 10.9, Ma=37Nm,
Washer DIN 125/DIN EN ISO 7089 -A13, retain with Loctite or similar



please observe the fivefold
security during welding of
the Retaining plate



A B C D
F all. 10.000 N
under static load



TYPE OF DOKUMENT: DATA SHEET

WEIGHT [KG]: 23.16 PROJECTION:

SAFETY NOTE
DIN ISO 16016:2007-12

Date Name

DESIGNATION

SHEET-
FORMAT
DINA4

Buhl Maschinenbau e.K.
Carl-Zeiss-Str. 2
71065 Sindelfingen

DRAW. 02.12.15 G.Velleuer

SAFETY LOCKING

APP. 04.12.15 W.Buhl

ADDITIONAL DESIGNATION

SCALE

GENERAL TOLERANCE
DIN ISO 2768 m-K

Buhl Maschinenbau e.K.
Sindelfingen

BUHL

SA 30PT

1:3

FROM	6	30	120	400	1000	2000
TO	6	30	120	400	1000	2000
TOL.±	0.1	0.2	0.3	0.5	0.8	1.2

2.0

DRAWING-NO.:
04-SA 30 PT 02-03

REV.
0