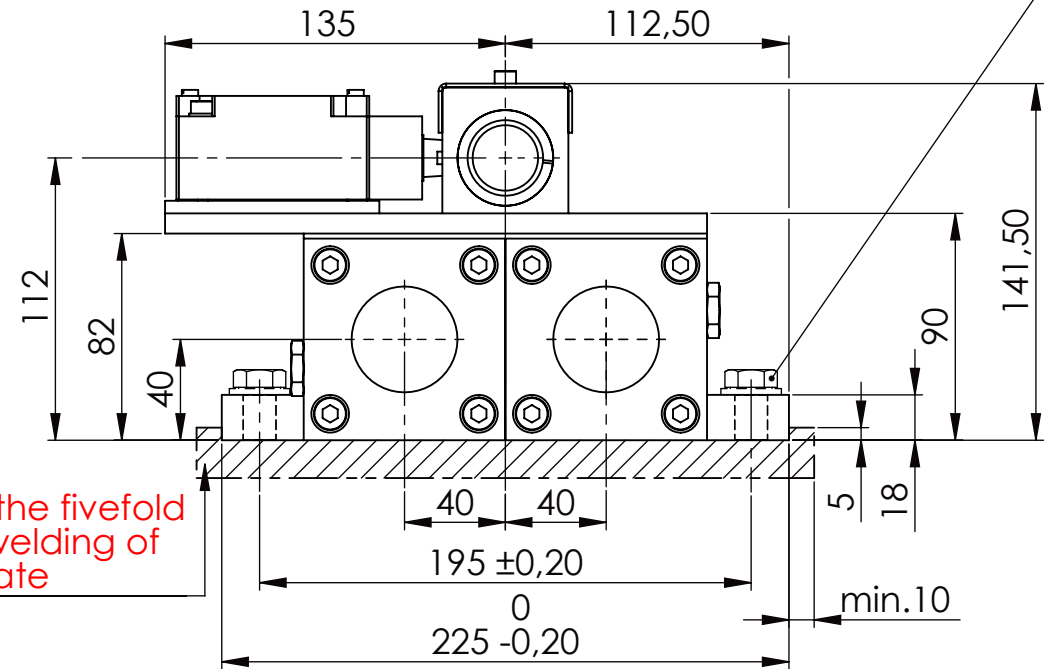
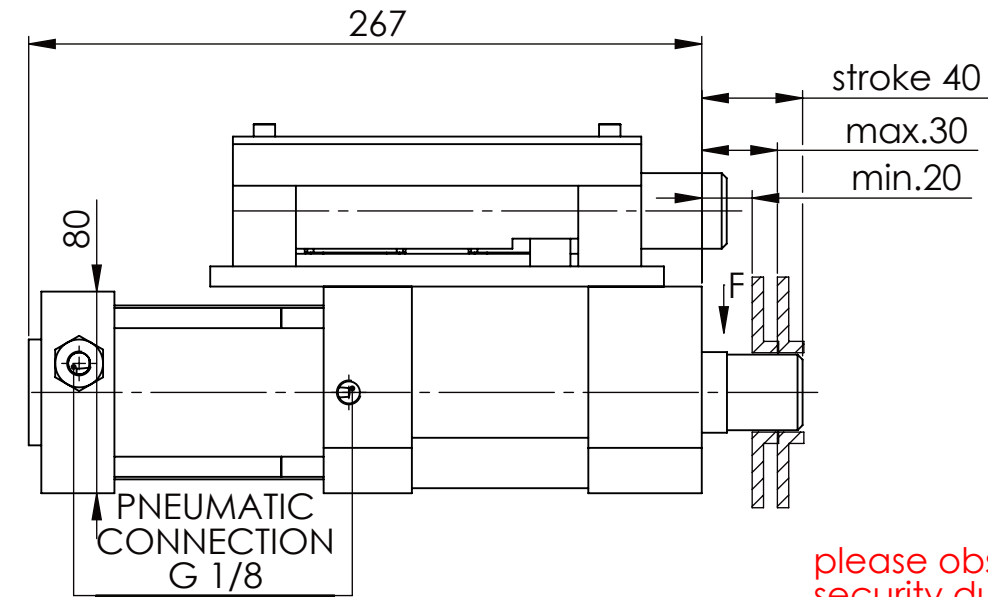
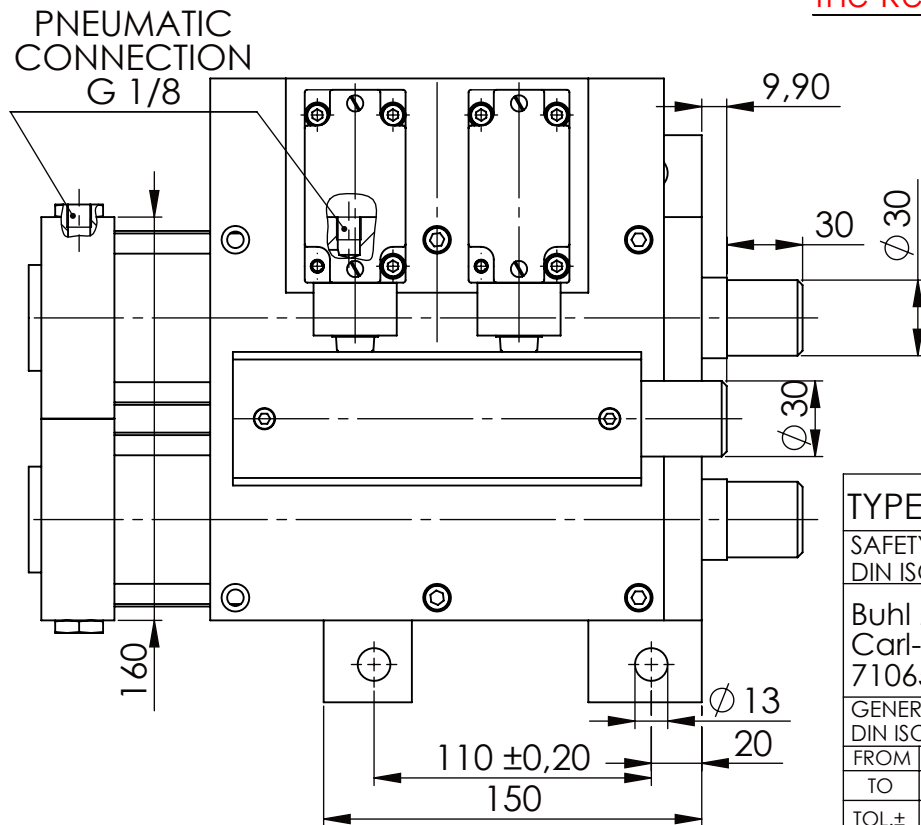


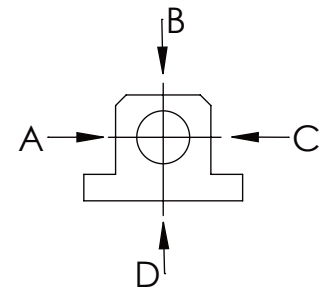
Hexagon Screw DIN 931/DIN EN ISO 4014-M12x35- 10.9, Ma=37Nm,  
Washer DIN 125/DIN EN ISO 7089 -A13, retain with Loctite or similar



please observe the fivefold security during welding of the Retaining plate



A	B	C	D
F all.	10.000 N		
under static load			



# TYPE OF DOKUMENT: DATA SHEET

SAFETY NOTE  
DIN ISO 16016:2007-12

Buhl Maschinenbau e.K.  
Carl-Zeiss-Str. 2  
71065 Sindelfingen

	Date	Name
DRAW.	02.12.15	G.Velleuer
APP.	04.12.15	W.Buhl

GENERAL TOLERANCE DIN ISO 2768 m-K							
FROM	6	30	120	400	1000	2000	
TO	6	30	120	400	1000	2000	4000
TOL.±	0.1	0.2	0.3	0.5	0.8	1.2	2.0

Buhl Maschinenbau e.K.  
Sindelfingen

**BUHL**

WEIGHT [KG]: 23.16 PROJECTION

DESIGNATION	SHEET-FORMAT
SAFETY LOCKING	DINA4
ADDITIONAL DESIGNATION	SCALE
SA 30PT	1:3
DRAWING-NO.:	REV.
04-SA 30 PT 01-05	0