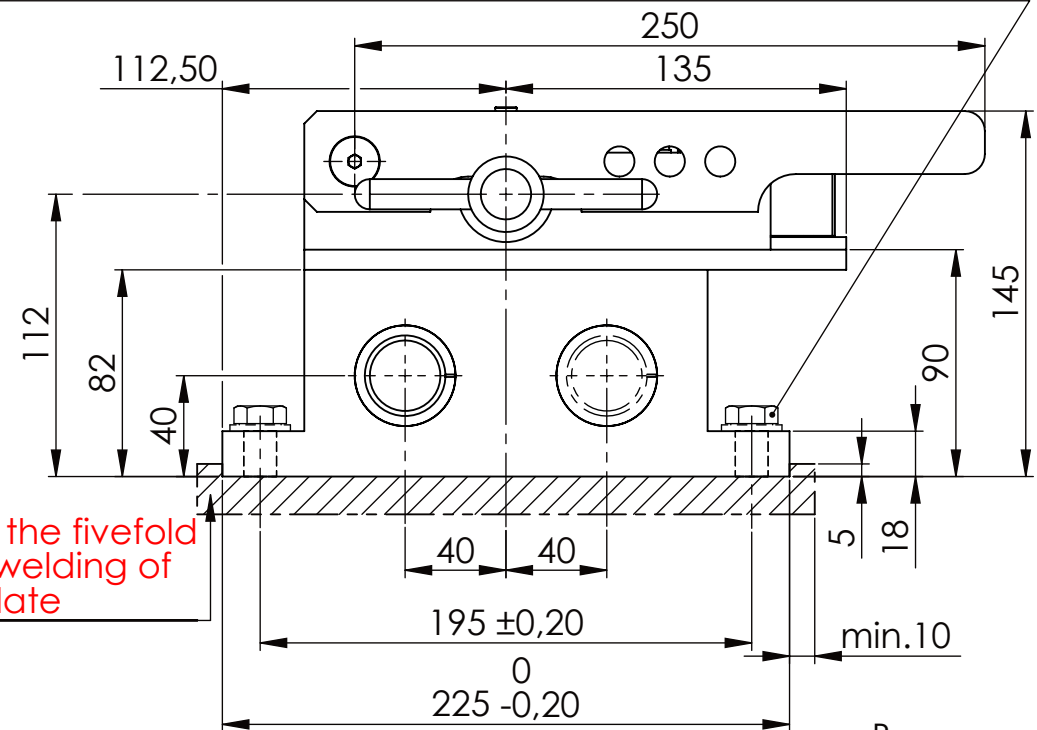
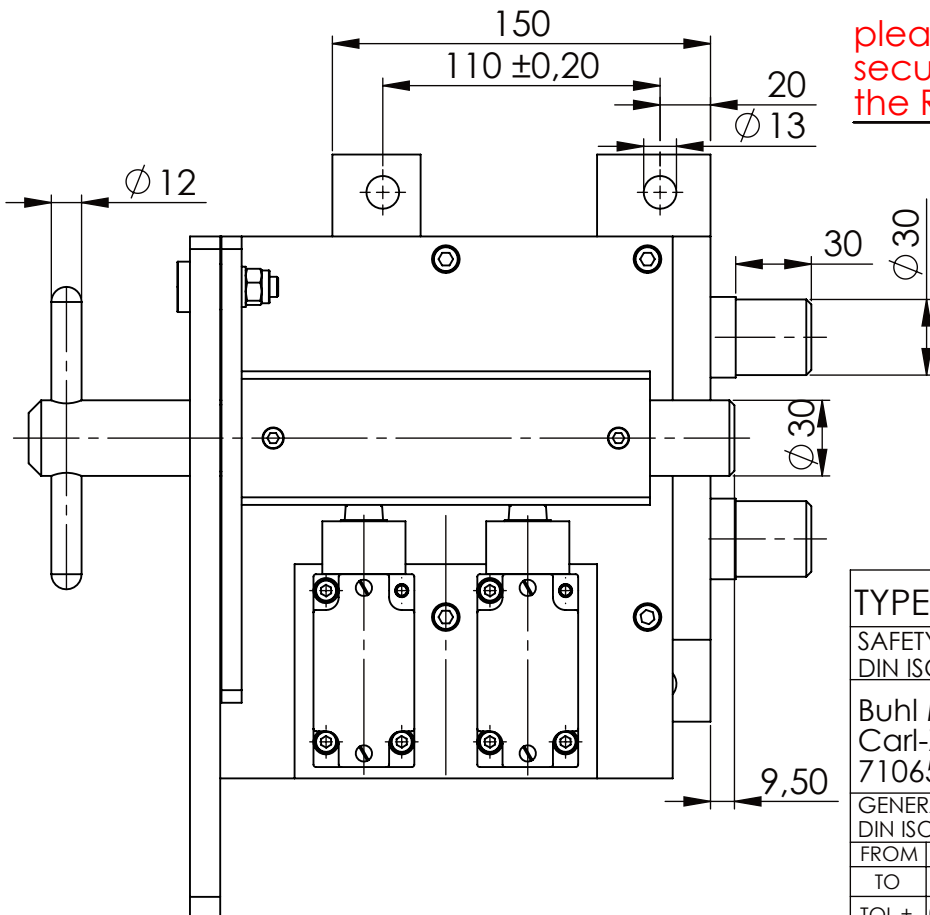
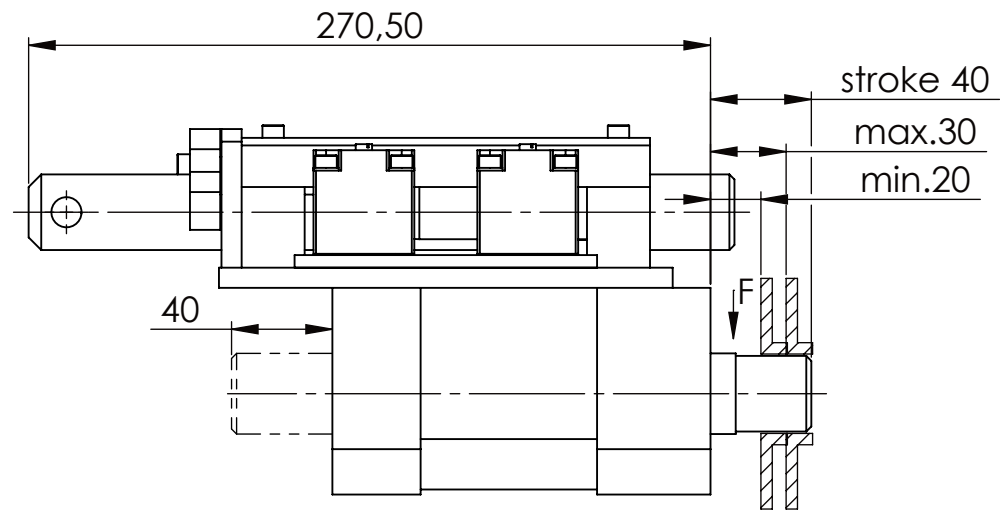


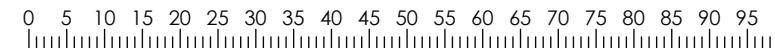
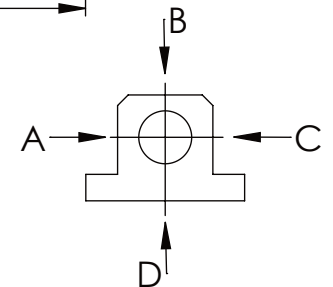
Hexagon Screw DIN 931/DIN EN ISO 4014-M12x35- 10.9, Ma=37Nm,
Washer DIN 125/DIN EN ISO 7089 -A13, retain with Loctite or similar




please observe the fivefold security during welding of the Retaining plate



| | |
|-------------------|----------|
| | A B C D |
| F all. | 10.000 N |
| under static load | |



| | | | | | | | | | | | | | | | |
|---|-----|-----|-----|-----|--|----------|-----|------------|--|-----------------------------------|--|--|-----------------------------------|------|-----------|
| TYPE OF DOKUMENT: DATA SHEET | | | | | | | | | | WEIGHT [KG]: 22.69 | | PROJECTION  | | | |
| SAFETY NOTE DIN ISO 16016:2007-12 | | | | | | Date | | Name | | DESIGNATION | | | SHEET-FORMAT | | |
| Buhl Maschinenbau e.K. Carl-Zeiss-Str. 2 71065 Sindelfingen | | | | | DRAW. | 02.12.15 | | G.Velleuer | | SAFETY LOCKING | | DINA4 | | | |
| | | | | | APP. | 04.12.15 | | W.Buhl | | ADDITIONAL DESIGNATION SA 30HT | | SCALE 1:3 | | | |
| GENERAL TOLERANCE DIN ISO 2768 m-K | | | | | <div>Buhl Maschinenbau e.K. Sindelfingen</div> <div>BUHL</div> | | | | | | | | DRAWING-NO.: 04-SA 30 HT 02-03 | | REV. 0 |
| FROM | 6 | 30 | 120 | 400 | | | | | | | | | 1000 | 2000 | |
| TO | 6 | 30 | 120 | 400 | | | | | | | | | 1000 | 2000 | 4000 |
| TOL.± | 0.1 | 0.2 | 0.3 | 0.5 | 0.8 | 1.2 | 2.0 | | | | | | | | |