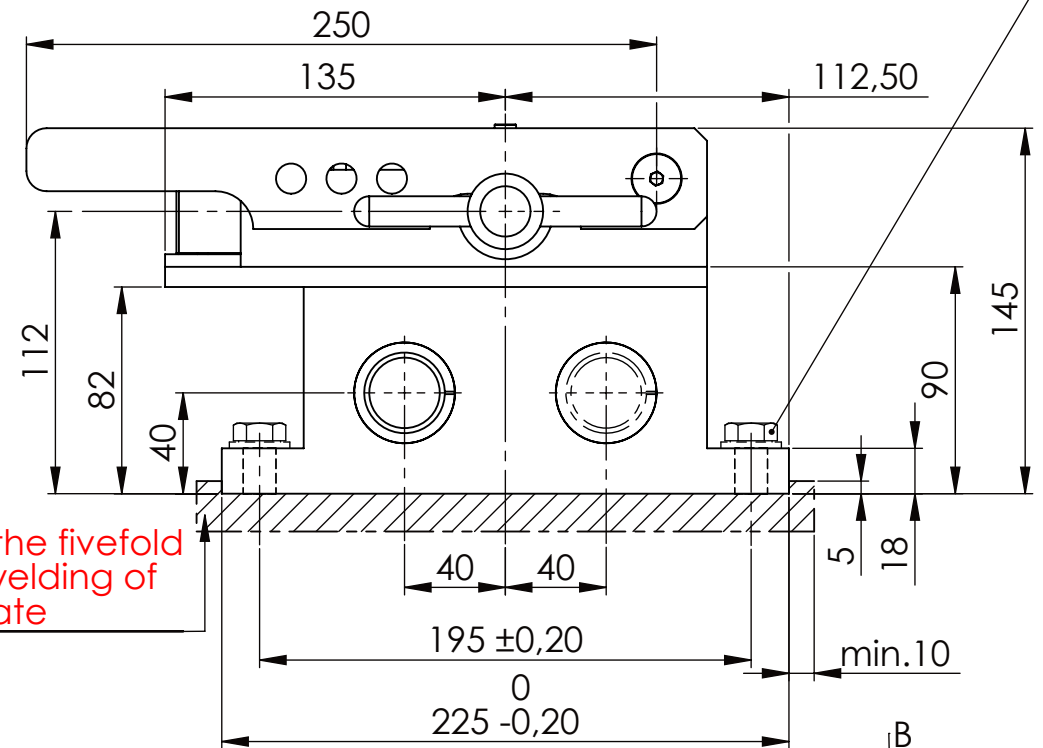
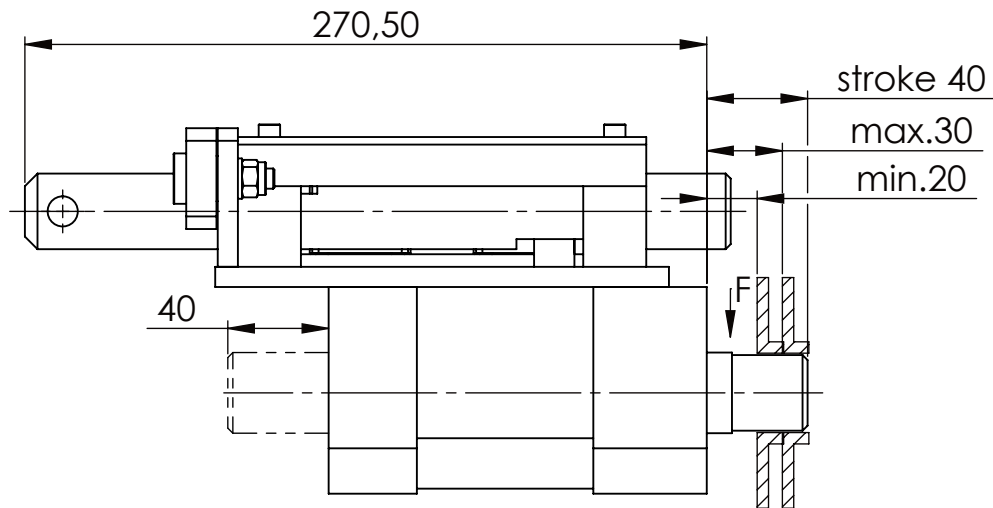
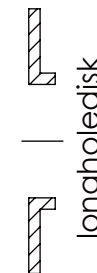
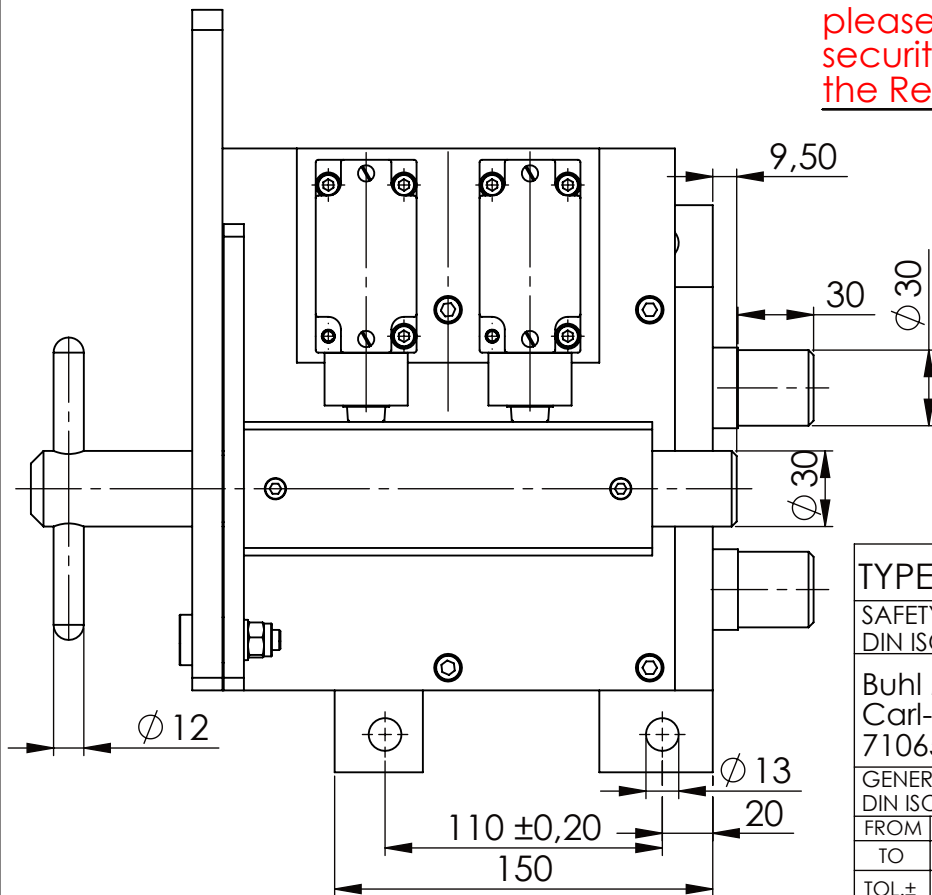


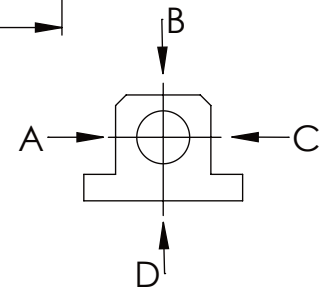
Hexagon Screw DIN 931/DIN EN ISO 4014-M12x35- 10.9, Ma=37Nm,  
Washer DIN 125/DIN EN ISO 7089 -A13, retain with Loctite or similar



please observe the fivefold  
security during welding of  
the Retaining plate



A	B	C	D
F all.	10.000 N		
under static load			



TYPE OF DOKUMENT: DATA SHEET

SAFETY NOTE

DIN ISO 16016:2007-12

Buhl Maschinenbau e.K.  
Carl-Zeiss-Str. 2  
71065 Sindelfingen

GENERAL TOLERANCE  
DIN ISO 2768 m-K

FROM	6	30	120	400	1000	2000
TO	6	30	120	400	1000	2000
TOL.±	0.1	0.2	0.3	0.5	0.8	1.2

Buhl Maschinenbau e.K.  
Sindelfingen

**BUHL**

Date Name

DRAW. 02.12.15 G.Velleuer

APP. 04.12.15 W.Buhl

WEIGHT [KG]: 22.69 PROJECTION

DESIGNATION

SAFETY LOCKING

ADDITIONAL DESIGNATION

SA 30HT

DRAWING-NO.:

04-SA 30 HT 01-03

SHEET-FORMAT

DINA4

SCALE

1:3

REV.

0