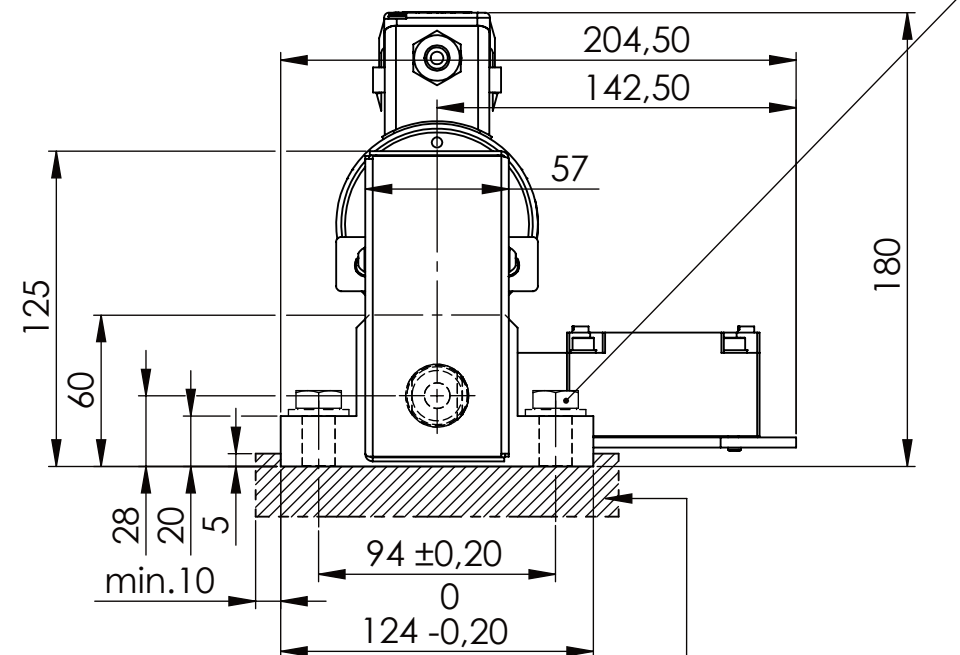


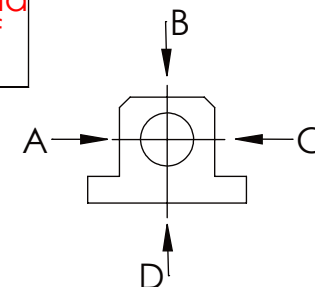
Hexagon Screw DIN 931/DIN EN ISO 4014-M12x40- 8.8, Ma=40Nm,
Washer DIN 125/DIN EN ISO 7089 -A13, retain with Loctite or similar



please observe the fivefold
security during welding of
the Retaining plate

longholedisk

A B C D
F all. 3.000 N
under static load



TYPE OF DOKUMENT: DATA SHEET

WEIGHT [KG]: 10.77 PROJECTION

SAFETY NOTE
DIN ISO 16016:2007-12
Buhl Maschinenbau e.K.
Carl-Zeiss-Str. 2
71065 Sindelfingen

DATE
Date
Name
G.Velleuer
APP. 23.11.15 W.Buhl

DESIGNATION
SAFETY LOCKING
ADDITIONAL DESIGNATION
SA 25EM
DRAWING-NO.:
04-SA 25 EM 01-05

SHEET-FORMAT
DINA4
SCALE
1:3
REV.
0

GENERAL TOLERANCE DIN ISO 2768 m-K							
FROM	6	30	120	400	1000	2000	
TO	6	30	120	400	1000	2000	4000
TOL.±	0.1	0.2	0.3	0.5	0.8	1.2	2.0

