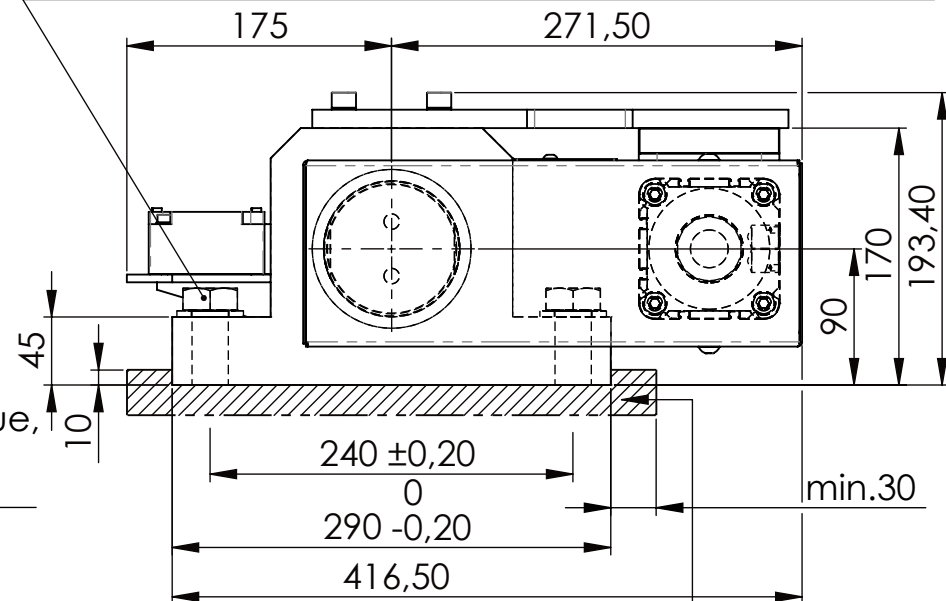
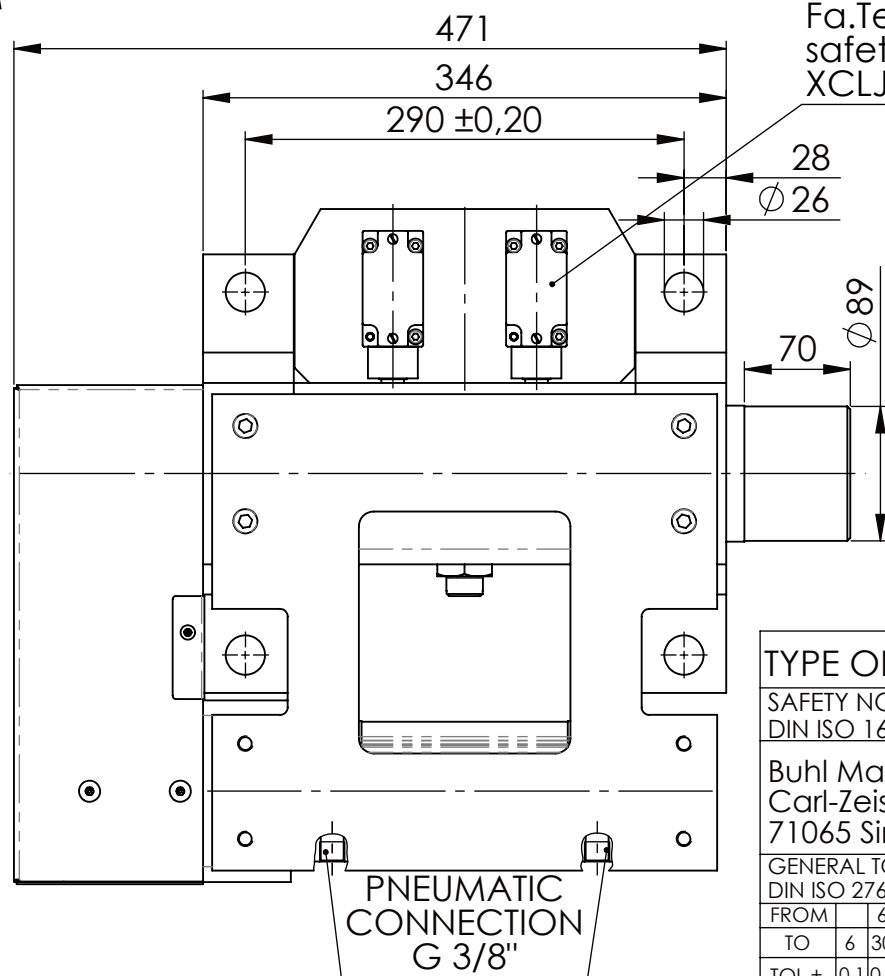


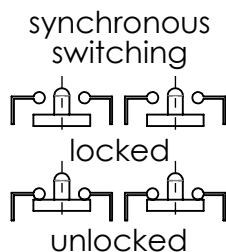
Hexagon Screw DIN 931/DIN EN ISO 4014-M24x90- 8.8,  
Ma=760Nm, Washer DIN 125/DIN EN ISO 7089 -A25,  
retain with Loctite or similar



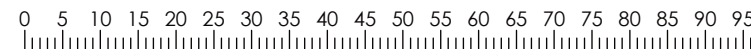
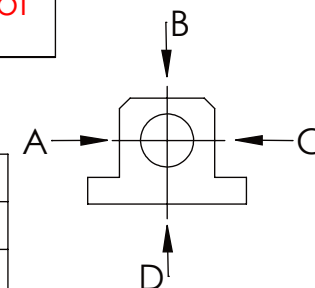
please observe the fivefold  
security during welding of  
the Retaining plate



Fa.Telemecanique,  
safety switch,  
XCLJ-167



	A	B	C	D
F all.	130.000 N	30.000 N		
under static load				



TYPE OF DOKUMENT: DATA SHEET

WEIGHT [KG]: 72.52 PROJECTION

SAFETY NOTE							
DIN ISO 16016:2007-12							
Buhl Maschinenbau e.K.							
Carl-Zeiss-Str. 2							
71065 Sindelfingen							
GENERAL TOLERANCE							
DIN ISO 2768 m-K							
FROM		6	30	120	400	1000	2000
TO	6	30	120	400	1000	2000	4000
TOL.±	0.1	0.2	0.3	0.5	0.8	1.2	2.0

Buhl Maschinenbau e.K.  
Carl-Zeiss-Str. 2  
71065 Sindelfingen

**BUHL**

DESIGNATION	SHEET-FORMAT
SAFETY LOCKING	DINA4
ADDITIONAL DESIGNATION	SCALE
SA 90P	1:5
DRAWING-NO.:	REV.
03-SA 90 P 04-05	1