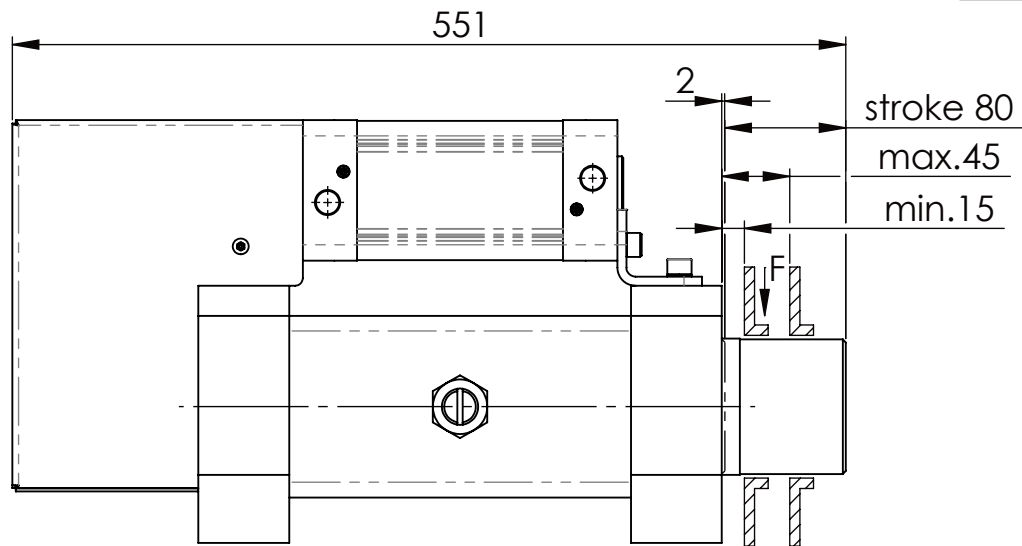
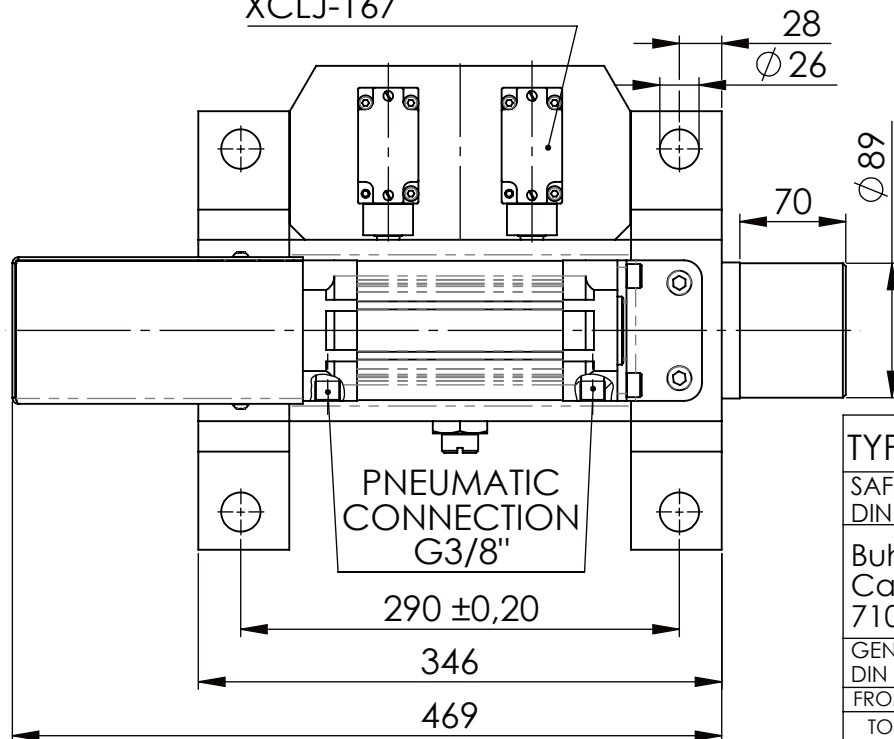


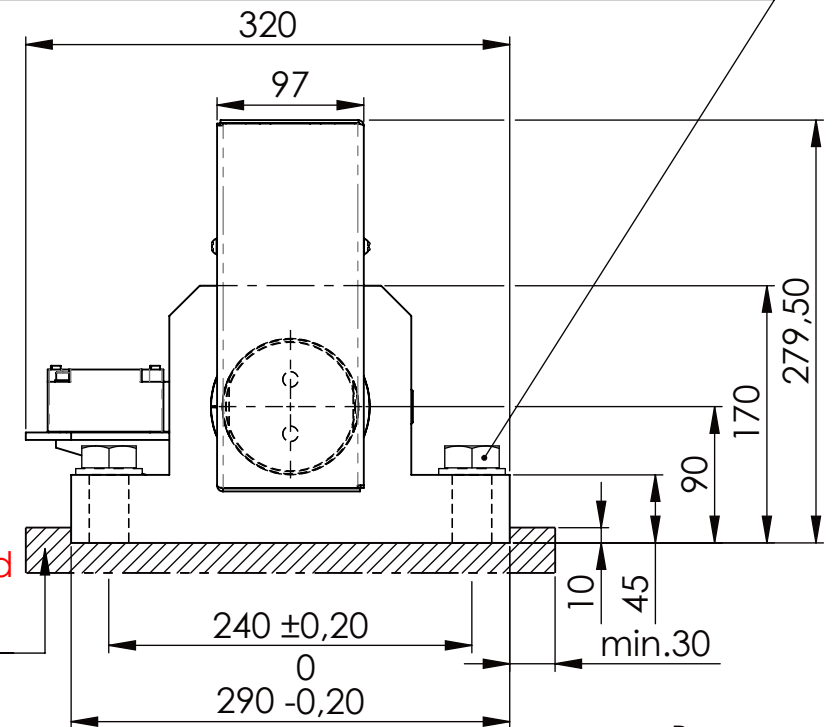
Hexagon Screw DIN 931/DIN EN ISO 4014-M24x90- 8.8, Ma=760Nm,  
Washer DIN 125/DIN EN ISO 7089 -A25, retain with Loctite or similar



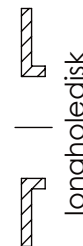
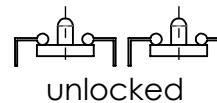
Fa.Telemecanique,  
safety switch,  
XCLJ-167



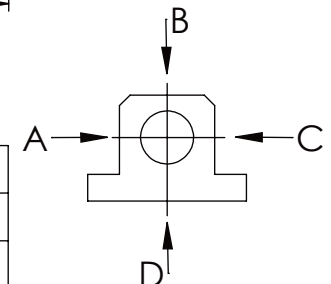
please observe the fivefold  
security during welding of  
the Retaining plate



synchronous  
switching



A	B	C	D
F all.	130.000 N	30.000 N	
under static load			



TYPE OF DOKUMENT: DATA SHEET

SAFETY NOTE  
DIN ISO 16016:2007-12

Buhl Maschinenbau e.K.  
Carl-Zeiss-Str. 2  
71065 Sindelfingen

GENERAL TOLERANCE  
DIN ISO 2768 m-K

FROM	6	30	120	400	1000	2000
TO	6	30	120	400	1000	2000
TOL.±	0.1	0.2	0.3	0.5	0.8	1.2

Buhl  
Maschinenbau  
e.K.

**BUHL**

WEIGHT [KG]: 61.66

PROJECTION

DESIGNATION

SAFETY LOCKING

ADDITIONAL DESIGNATION

SA 90P

DRAWING-NO.:

03-SA 90 P 02-03

SHEET-  
FORMAT  
DINA4

SCALE  
1:5

REV.  
1