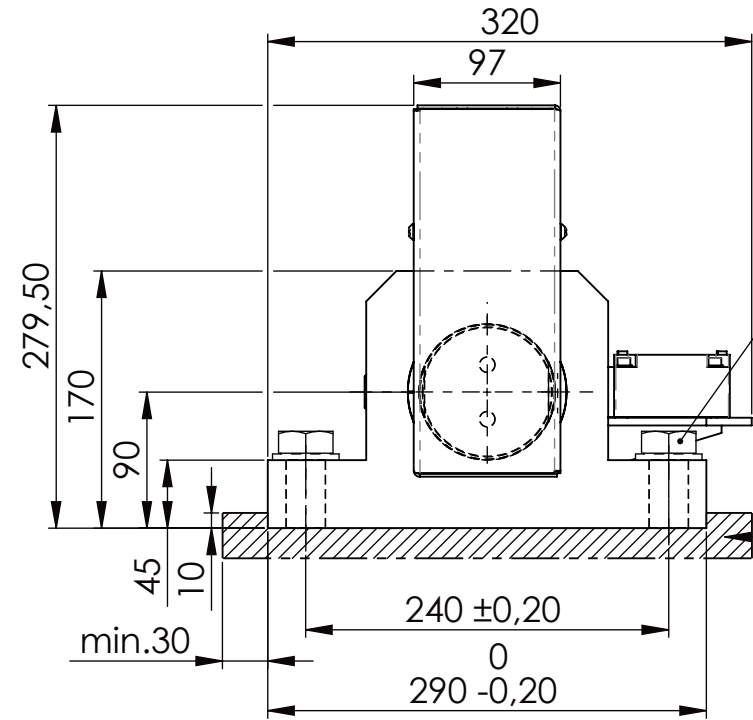
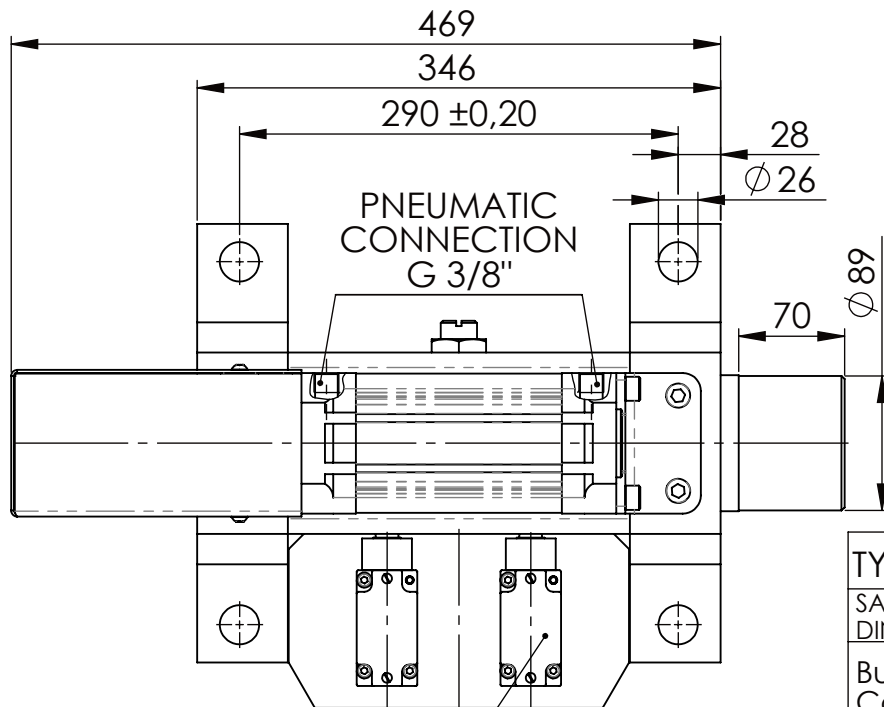
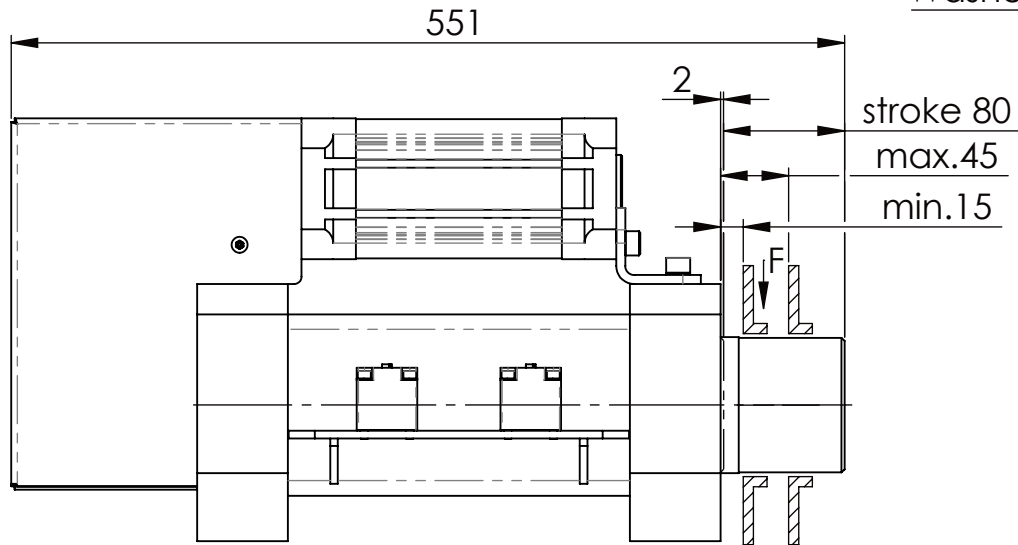
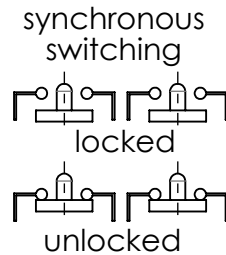


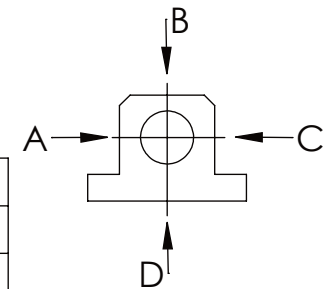
Hexagon Screw DIN 931/DIN EN ISO 4014-M24x90- 8.8, Ma=760Nm,
Washer DIN 125/DIN EN ISO 7089 -A25, retain with Loctite or similar



please observe the fivefold
security during welding of
the Retaining plate



	A	B	C	D
F all.	130.000 N	30.000 N		
under static load				



Fa.Telemechanique,
safety switch,
XCLJ-167

TYPE OF DOKUMENT: DATA SHEET

SAFETY NOTE
DIN ISO 16016:2007-12

Buhl Maschinenbau e.K.
Carl-Zeiss-Str. 2
71065 Sindelfingen

GENERAL TOLERANCE
DIN ISO 2768 m-K

FROM	6	30	120	400	1000	2000
TO	6	30	120	400	1000	2000
TOL.±	0.1	0.2	0.3	0.5	0.8	1.2

3rd Revision
Sindelfingen

BUHL

Date Name
14.12.23 G.Velleuer

APP. 14.12.23 W.Buhl

WEIGHT [KG]: 61.66 PROJECTION

DESIGNATION

SAFETY LOCKING

ADDITIONAL DESIGNATION

SA 90P

DRAWING-NO.:

03-SA 90 P 01-05

SHEET-
FORMAT
DINA4

SCALE
1:5

REV.
1