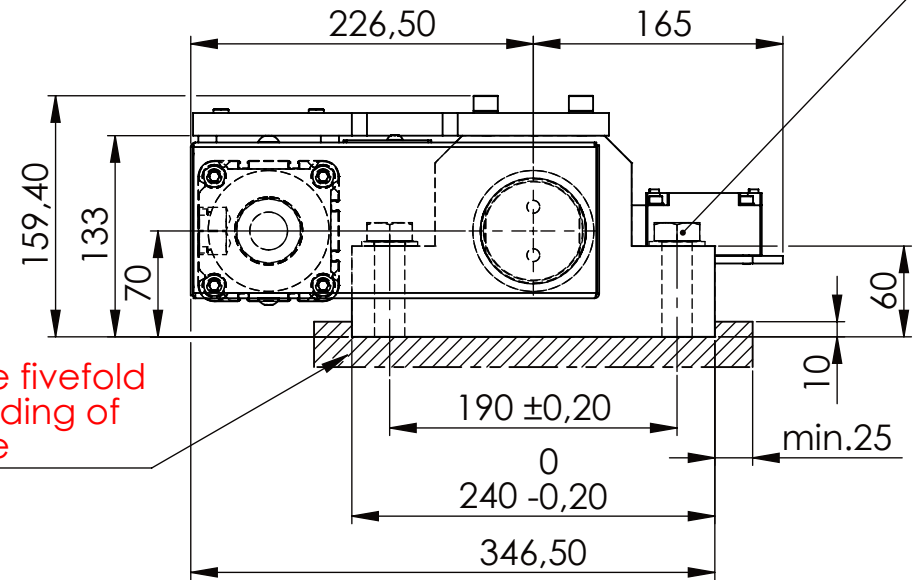
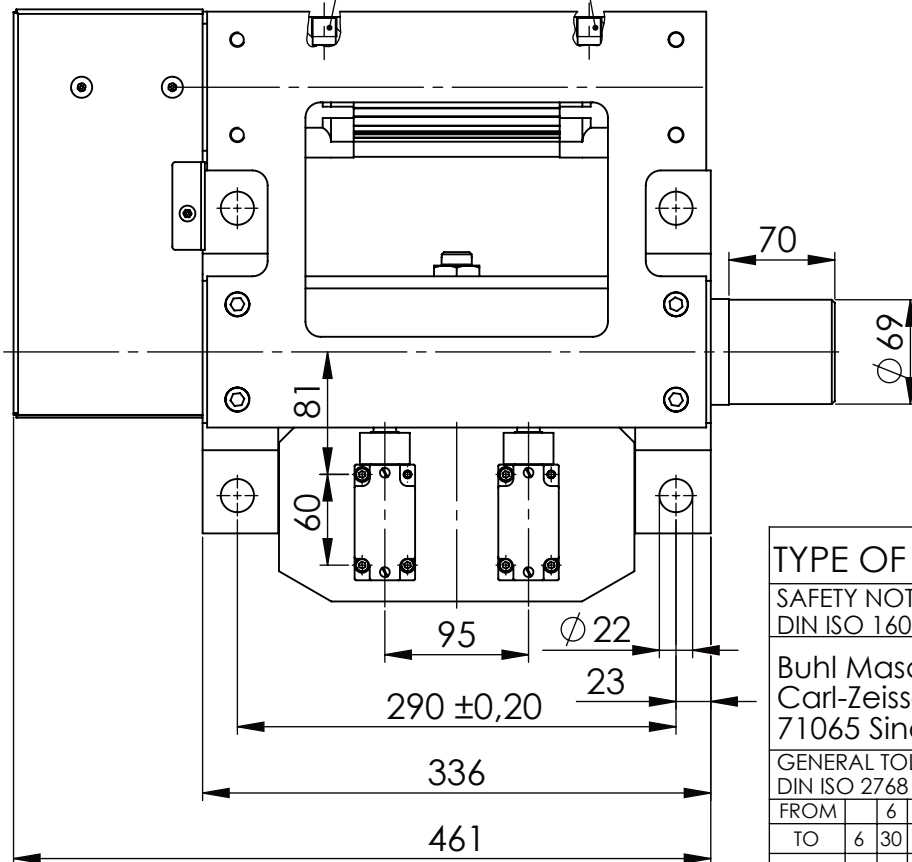


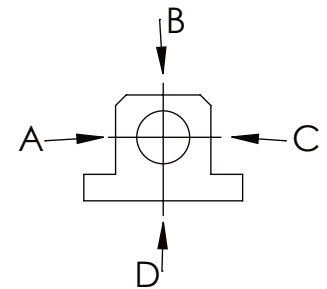
Hexagon Screw DIN 931/DIN EN ISO 4014-M20x90- 8.8, Ma=320Nm,  
Washer DIN 125/DIN EN ISO 7089 -A21, retain with Loctite or similar



PNEUMATIC  
CONNECTION  
G 3/8"



	A B C	D
F all.	60.000 N	17.000 N
under static load		



TYPE OF DOKUMENT: DATA SHEET

WEIGHT [KG]: 48.65 PROJECTION

SAFETY NOTE  
DIN ISO 16016:2007-12

Date Name

DESIGNATION

SHEET-  
FORMAT  
DINA4

Buhl Maschinenbau e.K.  
Carl-Zeiss-Str. 2  
71065 Sindelfingen

DRAW. 18.03.15 G.Velleuer

SAFETY LOCKING

APP. 19.03.15 W.Buhl

ADDITIONAL DESIGNATION

SCALE

GENERAL TOLERANCE  
DIN ISO 2768 m-K

**BUHL**

SA 70P

1:5

FROM	6	30	120	400	1000	2000
TO	6	30	120	400	1000	2000
TOL.±	0.1	0.2	0.3	0.5	0.8	1.2

Buhl Maschinenbau e.K.  
Sindelfingen

DRAWING-NO.:  
03-SA 70 P 03-03

REV.  
0