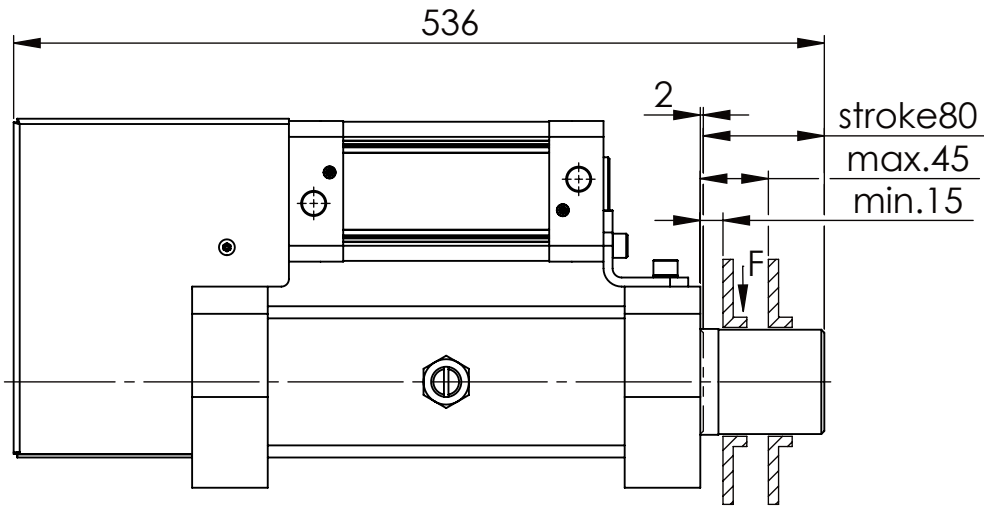
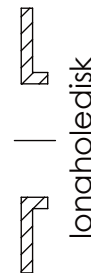
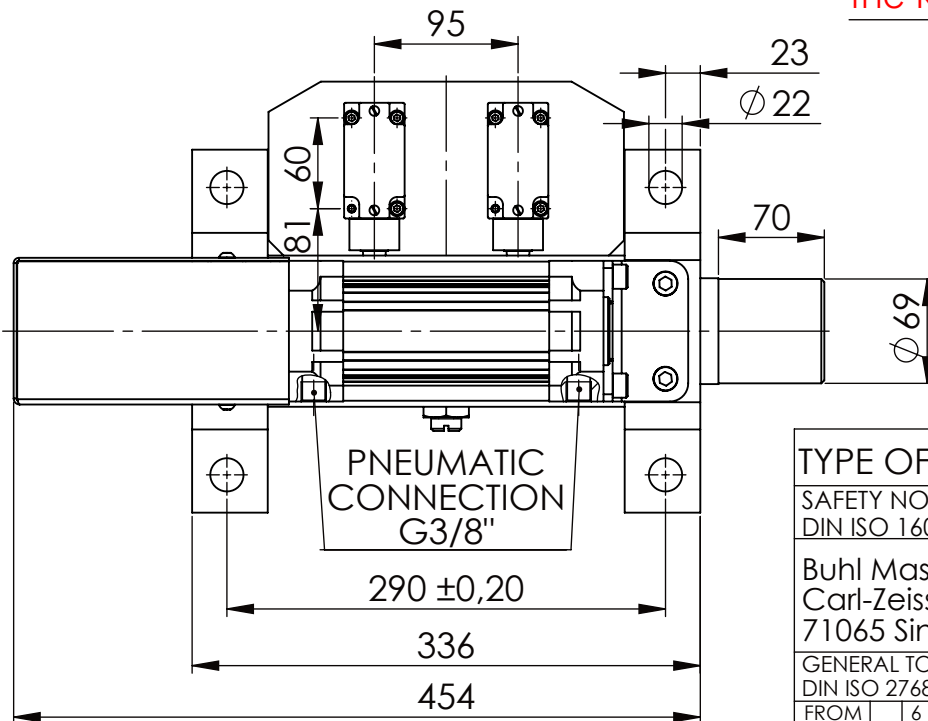
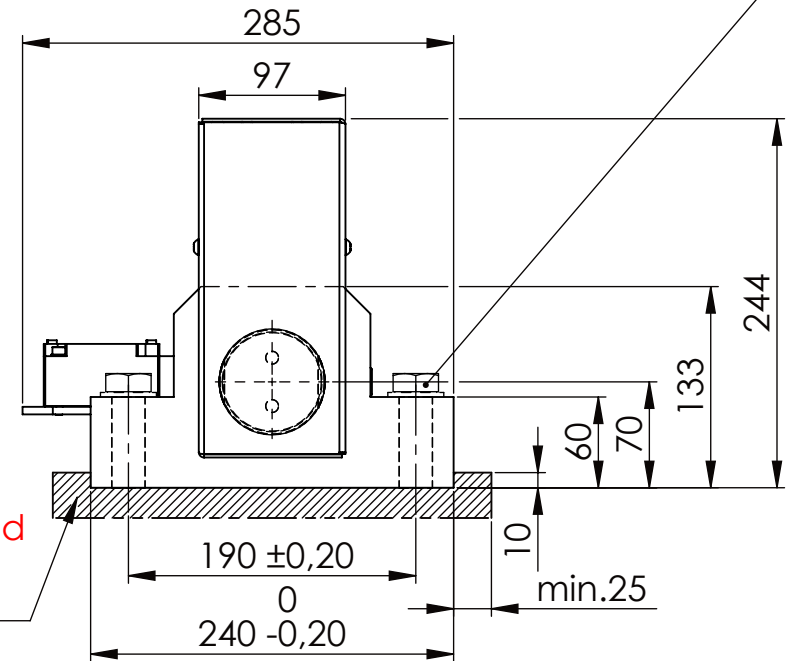


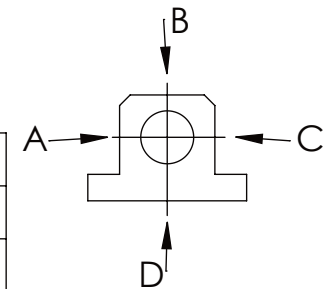
Hexagon Screw DIN 931/DIN EN ISO 4014-M20x90- 8.8, Ma=320Nm,
Washer DIN 125/DIN EN ISO 7089 -A21, retain with Loctite or similar



please observe the fivefold
security during welding of
the Retaining plate



A	B	C	D
F all.	60.000 N	17.000 N	
under static load			



TYPE OF DOKUMENT: DATA SHEET

WEIGHT [KG]: 40.83 PROJECTION

SAFETY NOTE
DIN ISO 16016:2007-12

Buhl Maschinenbau e.K.
Carl-Zeiss-Str. 2
71065 Sindelfingen

Date Name
DRAW. 10.03.15 G.Velleuer
APP. 11.03.15 W.Buhl

DESIGNATION
SAFETY LOCKING
ADDITIONAL DESIGNATION
SA 70P

SHEET-FORMAT
DINA4
SCALE
1:5

GENERAL TOLERANCE
DIN ISO 2768 m-K

FROM	6	30	120	400	1000	2000
TO	6	30	120	400	1000	2000
TOL. ±	0.1	0.2	0.3	0.5	0.8	1.2

Buhl Maschinenbau e.K.
Sindelfingen

BUHL

DRAWING-NO.:
03-SA 70 P 02-03

REV.
0