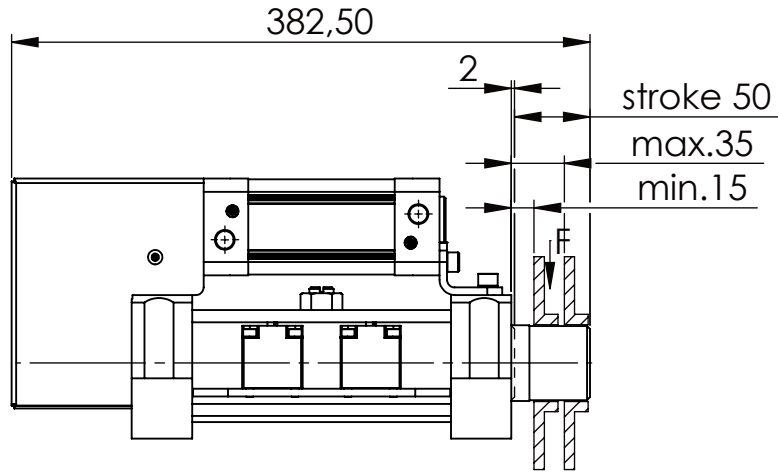
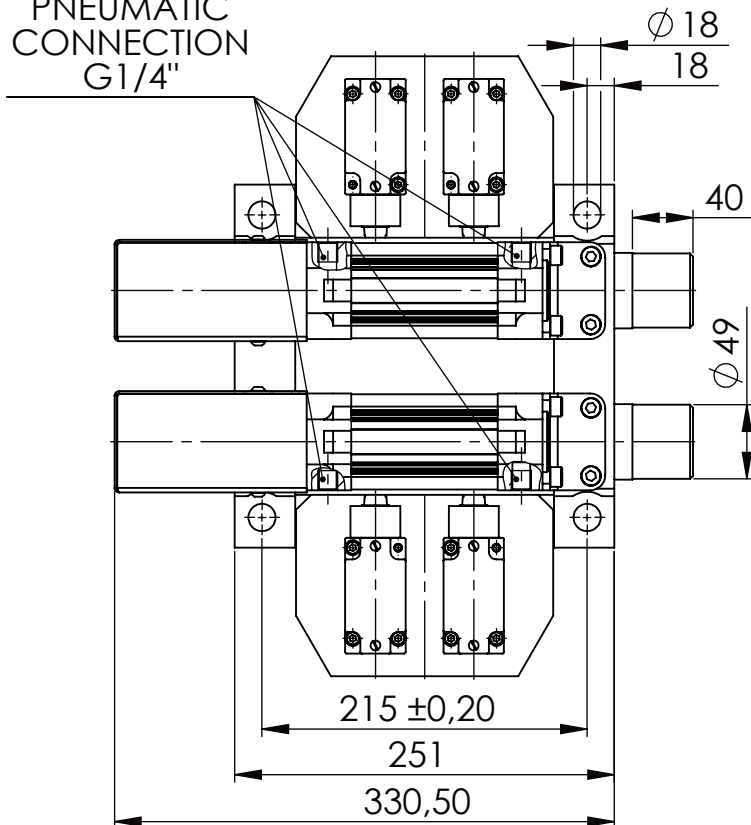


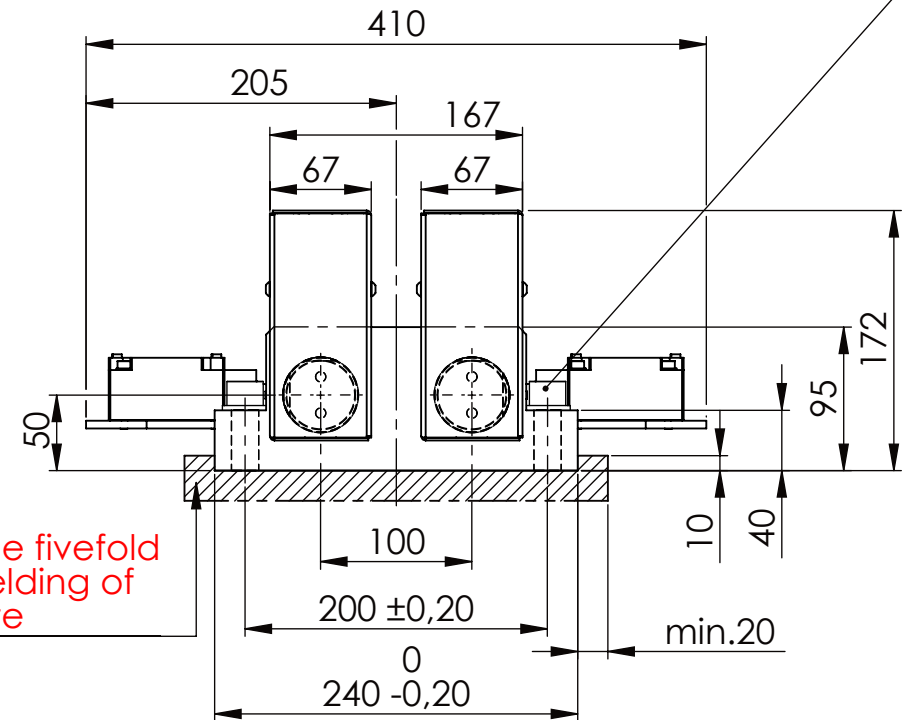
Socket Head Cap Screw DIN 912/DIN EN ISO 4762 - M16x60 - 8.8, Ma=90Nm,
Washer DIN 125/DIN EN ISO 7089 -A17, retain with Loctite or similar



PNEUMATIC
CONNECTION
G1/4"

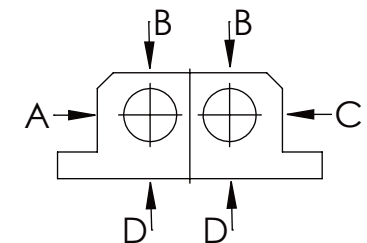


please observe the fivefold
security during welding of
the Retaining plate



longholedisk

| A B C | D |
|-------------------|---------|
| F all. 22.000 N | 6.185 N |
| under static load | |



0 5 10 15 20 25 30 35 40 45 50 55 60 65 70 75 80 85 90 95

TYPE OF DOKUMENT: DATA SHEET

WEIGHT [KG]: 30.36

PROJEKTION

SAFETY NOTE
DIN ISO 16016:2007-12

Date

Name

DESIGNATION

SHEET-
FORMAT
DINA4

Buhl Maschinenbau e.K.
Carl-Zeiss-Str. 2
71065 Sindelfingen

DRAW.

29.09.15

G.Velleuer

SAFETY LOCKING

APP.

01.10.15

W.Buhl

ADDITIONAL DESIGNATION

SCALE

GENERAL TOLERANCE
DIN ISO 2768 m-K

BUHL

SA 50PT-2S

1:5

| FROM | 6 | 30 | 120 | 400 | 1000 | 2000 |
|-------|-----|-----|-----|-----|------|------|
| TO | 6 | 30 | 120 | 400 | 1000 | 2000 |
| TOL.± | 0.1 | 0.2 | 0.3 | 0.5 | 0.8 | 1.2 |

BUHL

DRAWING-NO.:

REV.

03-SA 50 PT-2S 01-05

0