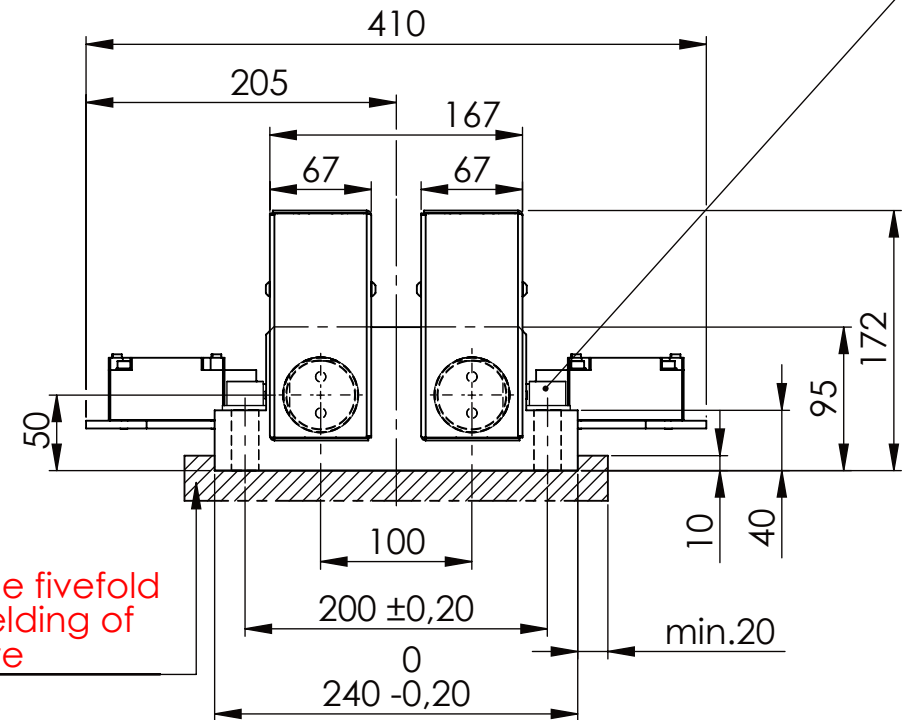
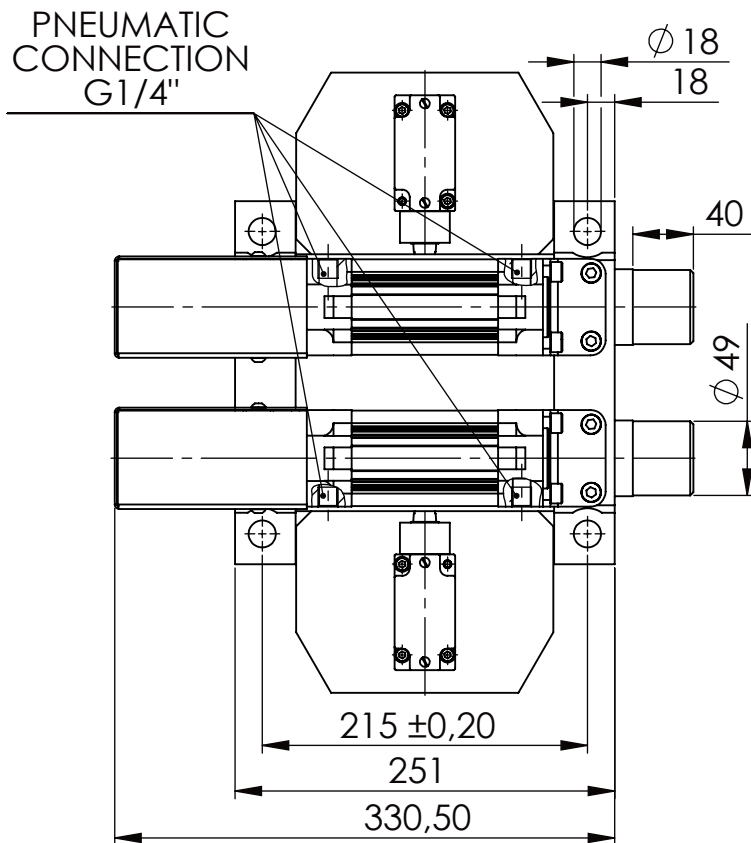
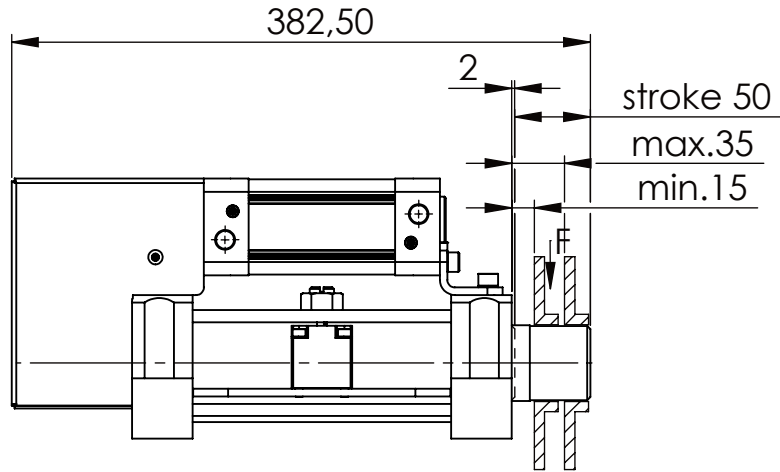


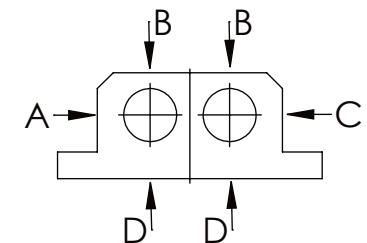
Socket Head Cap Screw DIN 912/DIN EN ISO 4762 - M16x60 - 8.8, Ma=90Nm,  
Washer DIN 125/DIN EN ISO 7089 -A17, retain with Loctite or similar



please observe the fivefold  
security during welding of  
the Retaining plate



	A B C	D
F all.	22.000 N	6.185 N
under static load		



TYPE OF DOKUMENT: DATA SHEET

WEIGHT [KG]: 30.12

PROJEKTION

SAFETY NOTE  
DIN ISO 16016:2007-12

Date

Name

DESIGNATION

SHEET-  
FORMAT  
DINA4

Buhl Maschinenbau e.K.  
Carl-Zeiss-Str. 2  
71065 Sindelfingen

DRAW.

29.09.15

G.Velleuer

SAFETY LOCKING

APP.

01.10.15

W.Buhl

ADDITIONAL DESIGNATION

SCALE

GENERAL TOLERANCE  
DIN ISO 2768 m-K

BUHL

SA 50PT-1S

1:5

FROM	6	30	120	400	1000	2000
TO	6	30	120	400	1000	2000
TOL.±	0.1	0.2	0.3	0.5	0.8	1.2
	0.1	0.2	0.3	0.5	0.8	1.2

DRAWING-NO.:

REV.

03-SA 50 PT-1S 01-05

0