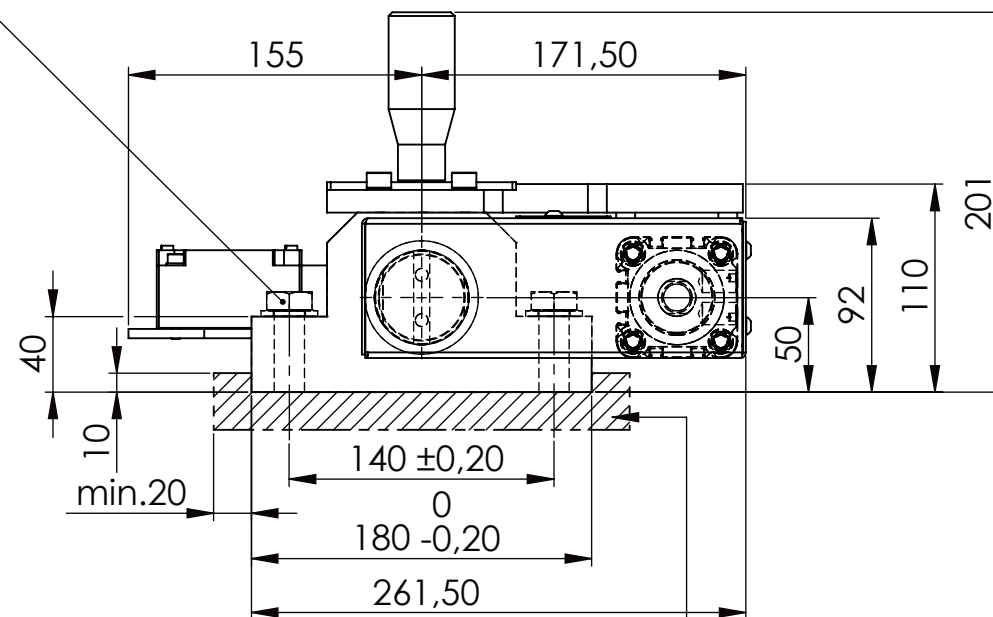


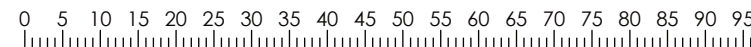
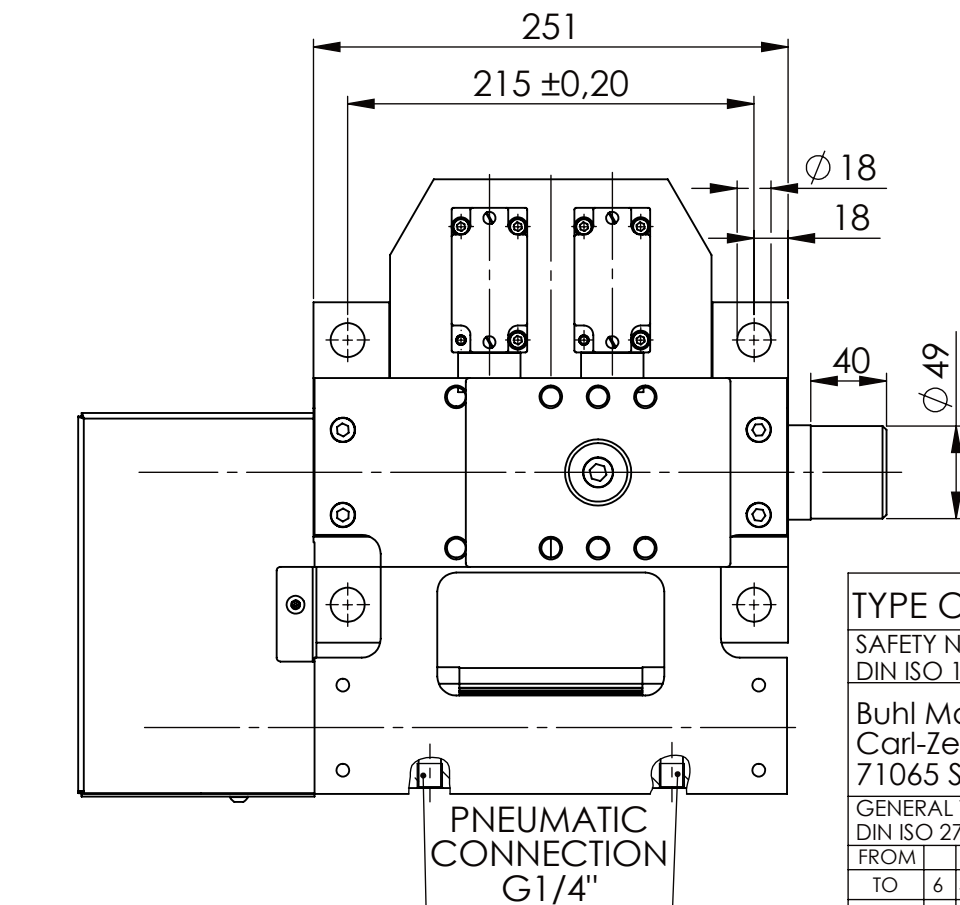
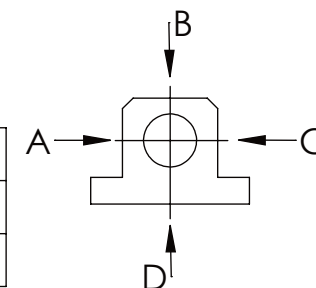
Hexagon Screw DIN 931/DIN EN ISO 4014-M16x60- 8.8,
Ma=90Nm, Washer DIN 125/DIN EN ISO 7089 -A17,
retain with Loctite or similar



please observe the fivefold
security during welding of
the Retaining plate



	A	B	C	D
F all.	22.000 N			6.185 N
under static load				



TYPE OF DOKUMENT: DATA SHEET

SAFETY NOTE

DIN ISO 16016:2007-12

Buhl Maschinenbau e.K.
Carl-Zeiss-Str. 2
71065 Sindelfingen

GENERAL TOLERANCE
DIN ISO 2768 m-K

FROM	6	30	120	400	1000	2000
TO	6	30	120	400	1000	2000
TOL.±	0.1	0.2	0.3	0.5	0.8	1.2

3d Maschinenbau
Sindelfingen

BUHL

WEIGHT [KG]: 22.86

PROJECTION

DESIGNATION

SAFETY LOCKING

ADDITIONAL DESIGNATION

SA 50P+H

DRAWING-NO.:

03-SA 50 P+H 02-03

SHEET-
FORMAT
DINA4

SCALE

1:4

REV.

0