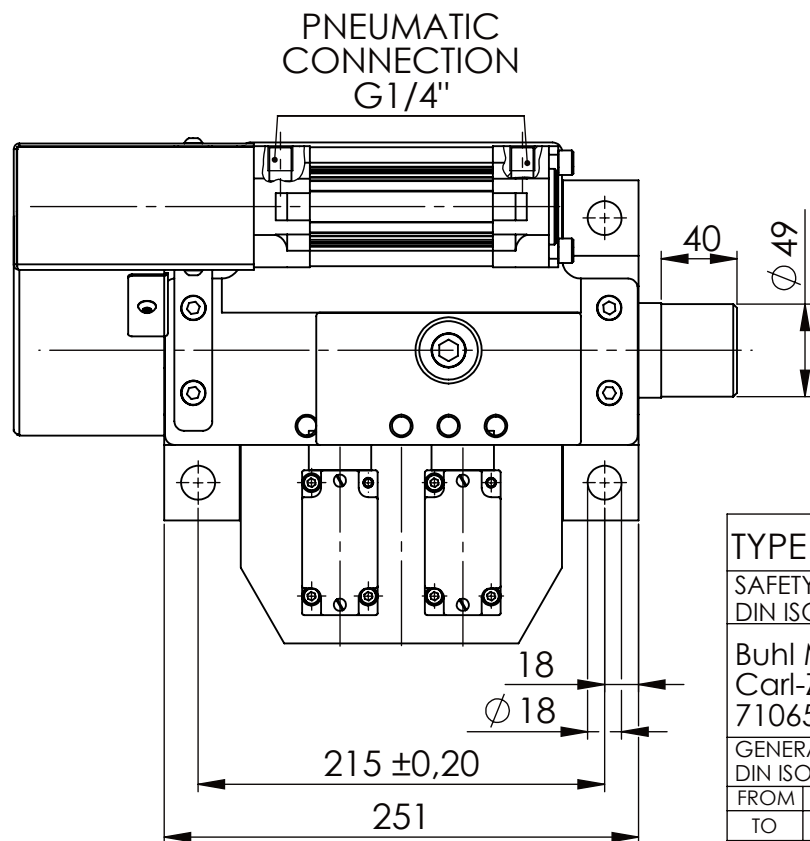
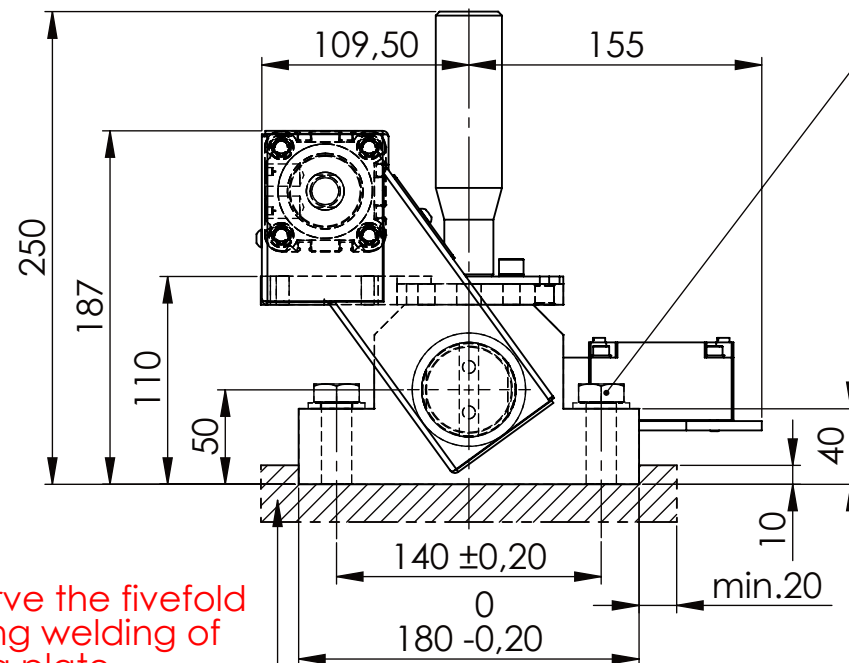
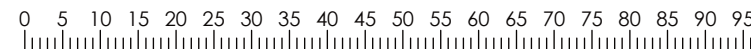
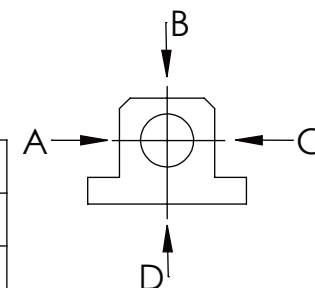


Hexagon Screw DIN 931/DIN EN ISO 4014-M16x60- 8.8, Ma=90Nm,
Washer DIN 125/DIN EN ISO 7089 -A17, retain with Loctite or similar



	A B C	D
F all.	22.000 N	6.185 N
under static load		



TYPE OF DOKUMENT: DATA SHEET

WEIGHT [KG]: 21.56

PROJECTION

SAFETY NOTE
DIN ISO 16016:2007-12

Date

Name

DESIGNATION

SHEET-
FORMAT
DINA4

Buhl Maschinenbau e.K.
Carl-Zeiss-Str. 2
71065 Sindelfingen

DRAW.

12.10.15

G.Velleuer

SAFETY LOCKING

APP.

14.10.15

W.Buhl

ADDITIONAL DESIGNATION

SCALE

GENERAL TOLERANCE
DIN ISO 2768 m-K

BUHL

SA 50P+H

1:4

FROM	6	30	120	400	1000	2000	4000
TO	6	30	120	400	1000	2000	4000
TOL.±	0.1	0.2	0.3	0.5	0.8	1.2	2.0

DRAWING-NO.:

REV.

03-SA 50 P+H 01-03

0