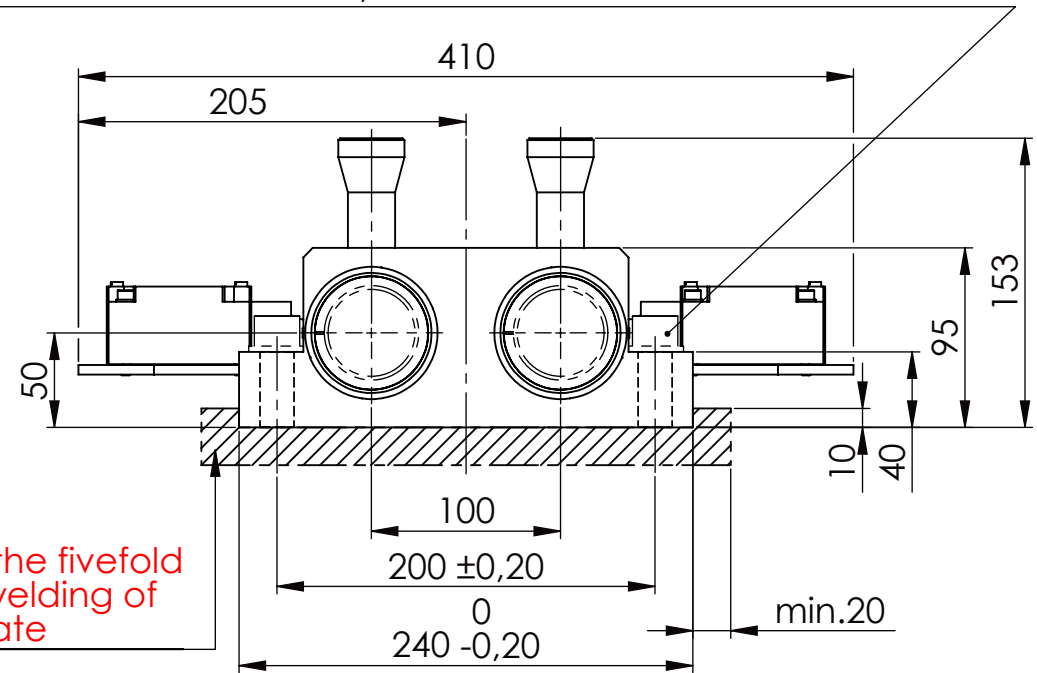
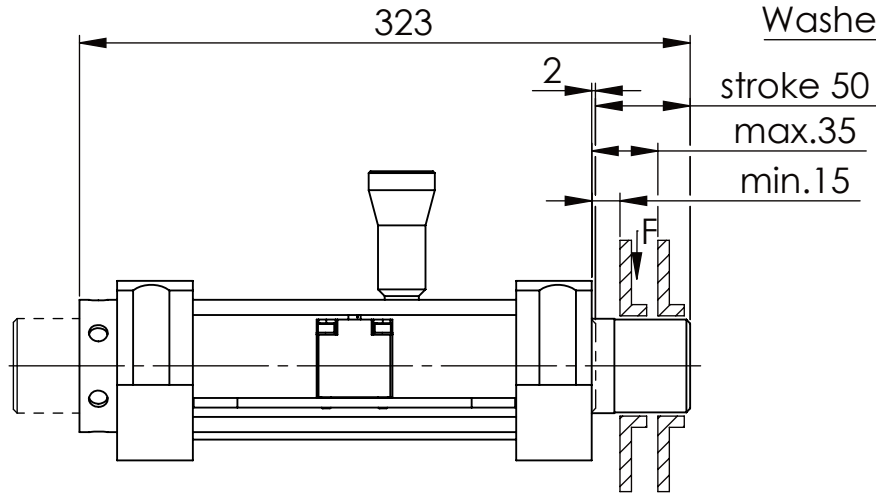
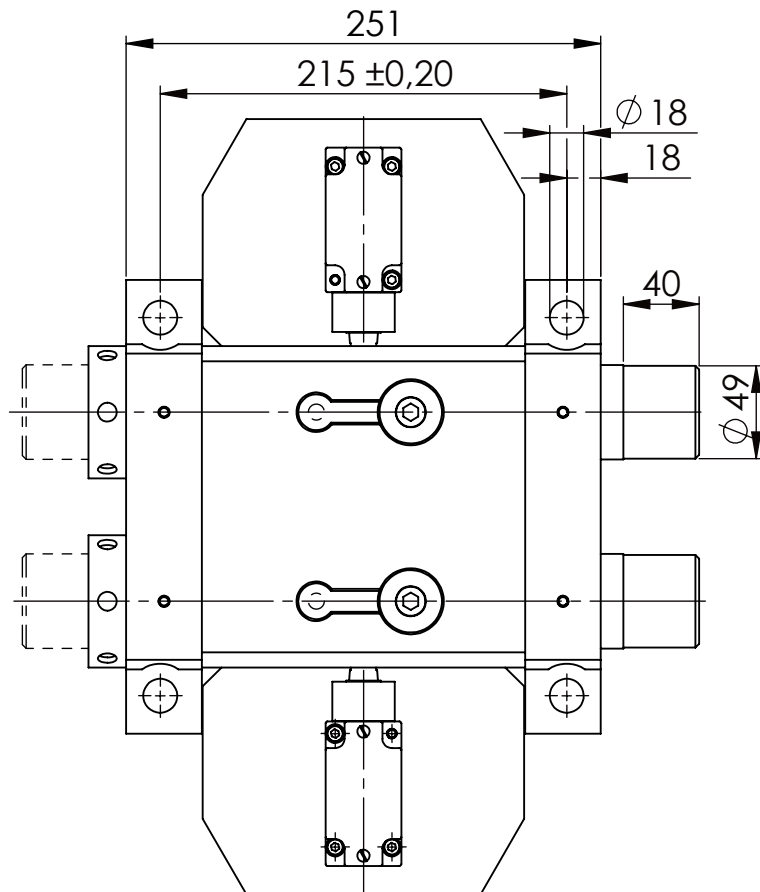


Socket Head Cap Screw DIN 912/DIN EN ISO 4762 - M16x60 - 8.8, Ma=90Nm,  
Washer DIN 125/DIN EN ISO 7089 -A17, retain with Loctite or similar

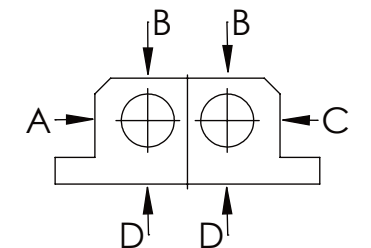


please observe the fivefold  
security during welding of  
the Retaining plate



longholedisk

A B C	D
F all. 22.000 N	6.185 N
under static load	



0 5 10 15 20 25 30 35 40 45 50 55 60 65 70 75 80 85 90 95

TYPE OF DOKUMENT: DATA SHEET

WEIGHT [KG]: 23.67 PROJECTION

SAFETY NOTE  
DIN ISO 16016:2007-12

Buhl Maschinenbau e.K.  
Carl-Zeiss-Str. 2  
71065 Sindelfingen

DRAW.

29.09.15

G.Velleuer

APP.

01.10.15

W.Buhl

GENERAL TOLERANCE  
DIN ISO 2768 m-K

FROM	6	30	120	400	1000	2000
TO	6	30	120	400	1000	2000
TOL.±	0.1	0.2	0.3	0.5	0.8	1.2

BUHL

BUHL

DESIGNATION

SAFETY LOCKING

ADDITIONAL DESIGNATION

SA 50HT-1S

DRAWING-NO.:

03-SA 50 HT-1S 01-03

SHEET-  
FORMAT  
DINA4

SCALE  
1:4

REV.  
0