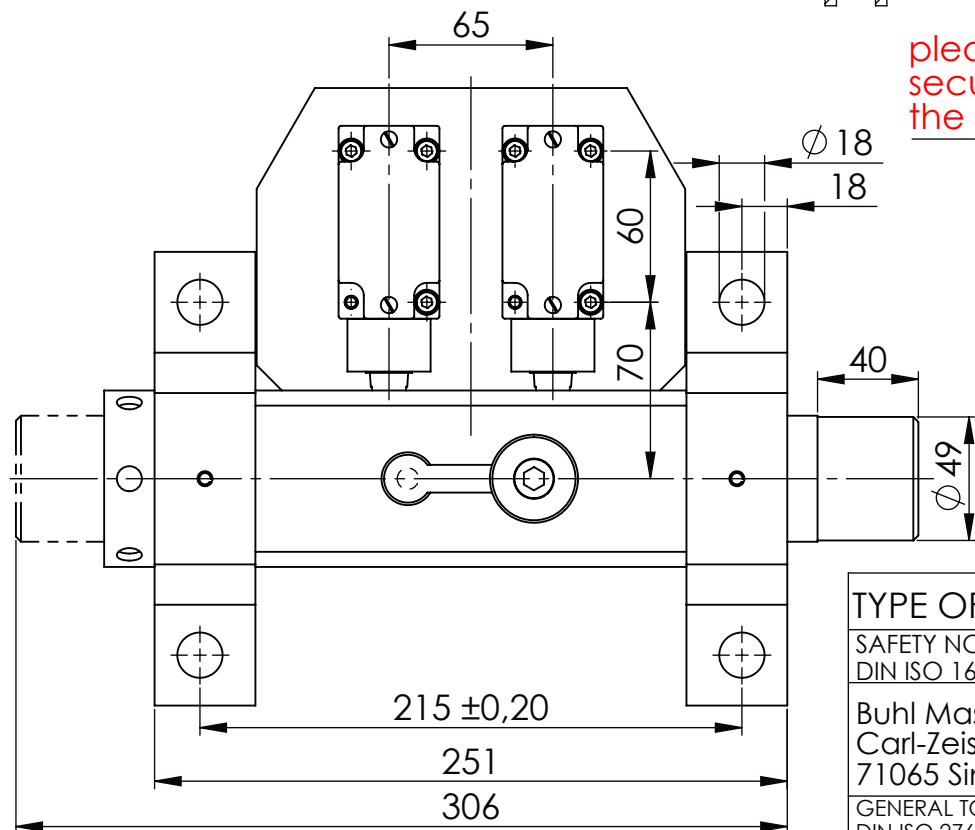
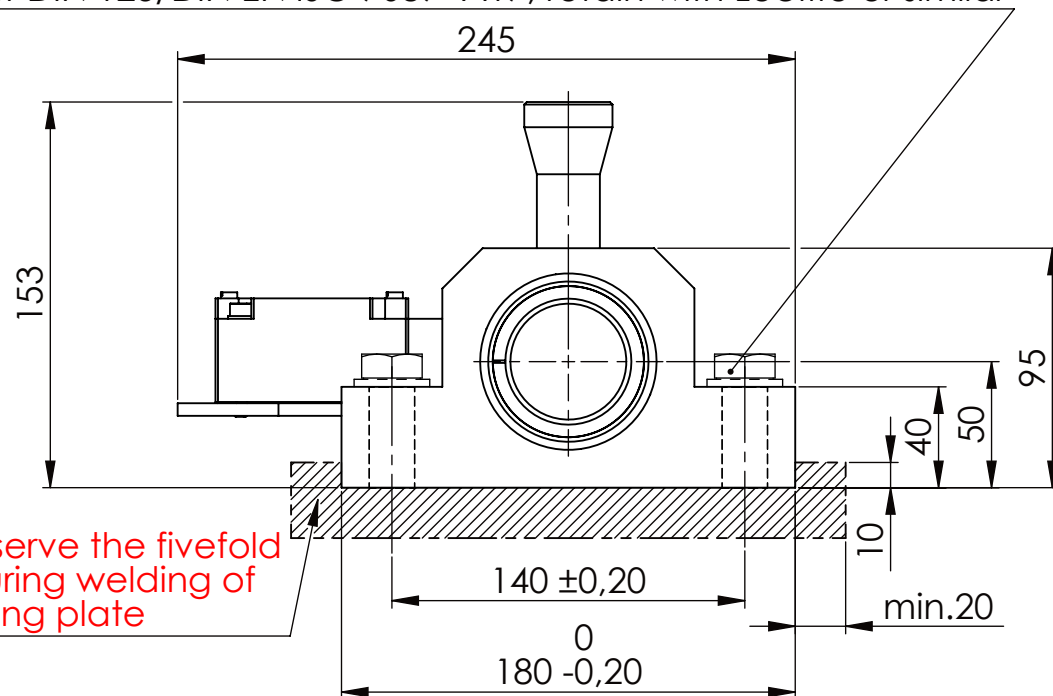
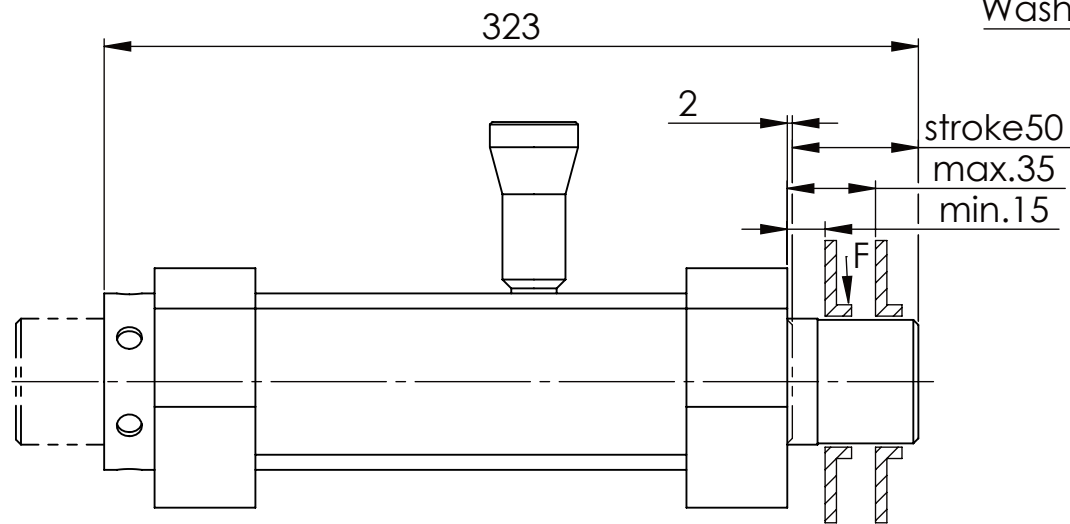
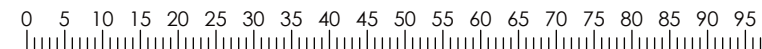
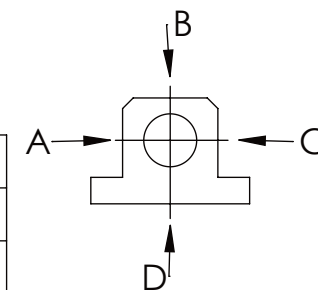


Hexagon Screw DIN 931/DIN EN ISO 4014-M16x60- 8.8, Ma=90Nm,
Washer DIN 125/DIN EN ISO 7089 -A17, retain with Loctite or similar



longholedisk

A	B	C	D
F all.	22.000 N	6.185 N	
under static load			



TYPE OF DOKUMENT: DATA SHEET

WEIGHT [KG]: 13.45 PROJECTION

SAFETY NOTE
DIN ISO 16016:2007-12

Date Name

DESIGNATION

Buhl Maschinenbau e.K.
Carl-Zeiss-Str. 2
71065 Sindelfingen

DRAW. 06.03.15 G.Velleuer
APP. 06.03.15 W.Buhl

SAFETY LOCKING
ADDITIONAL DESIGNATION
SA 50H

GENERAL TOLERANCE
DIN ISO 2768 m-K

FROM TO TOL.±

DRAWING-NO.:
03-SA 50 H 02-03

FROM	TO	TOL.±
6	30	0.1
30	120	0.2
120	400	0.3
400	1000	0.5
1000	2000	0.8
2000	4000	1.2
4000		2.0

Buhl Maschinenbau e.K.
Sindelfingen

REV.
0