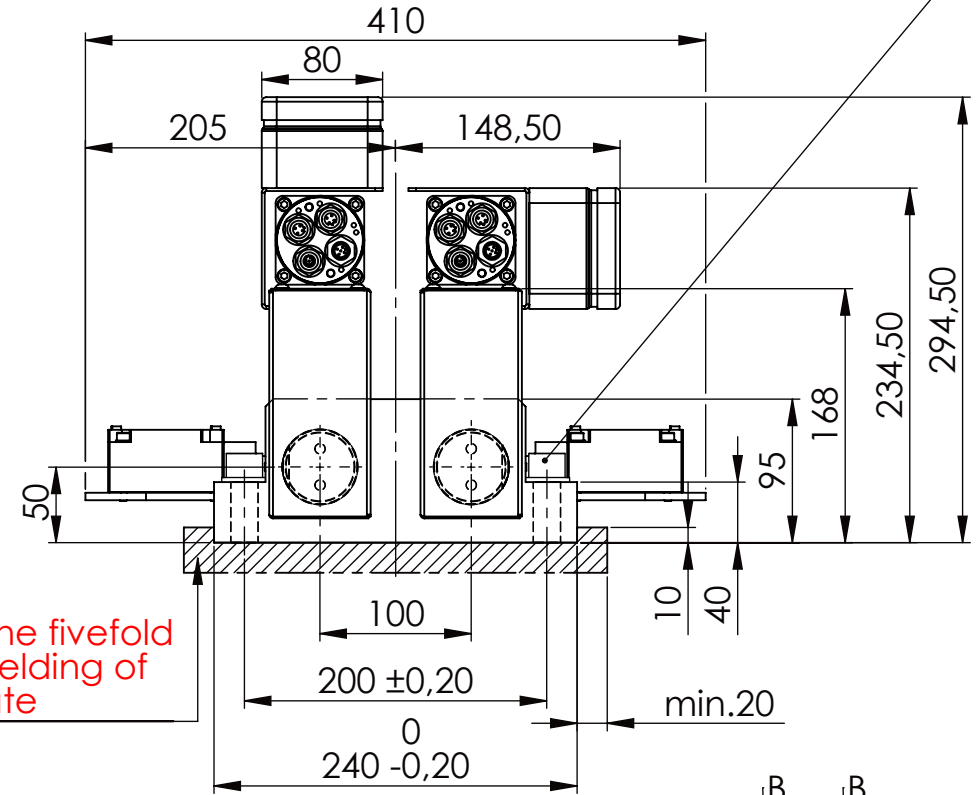
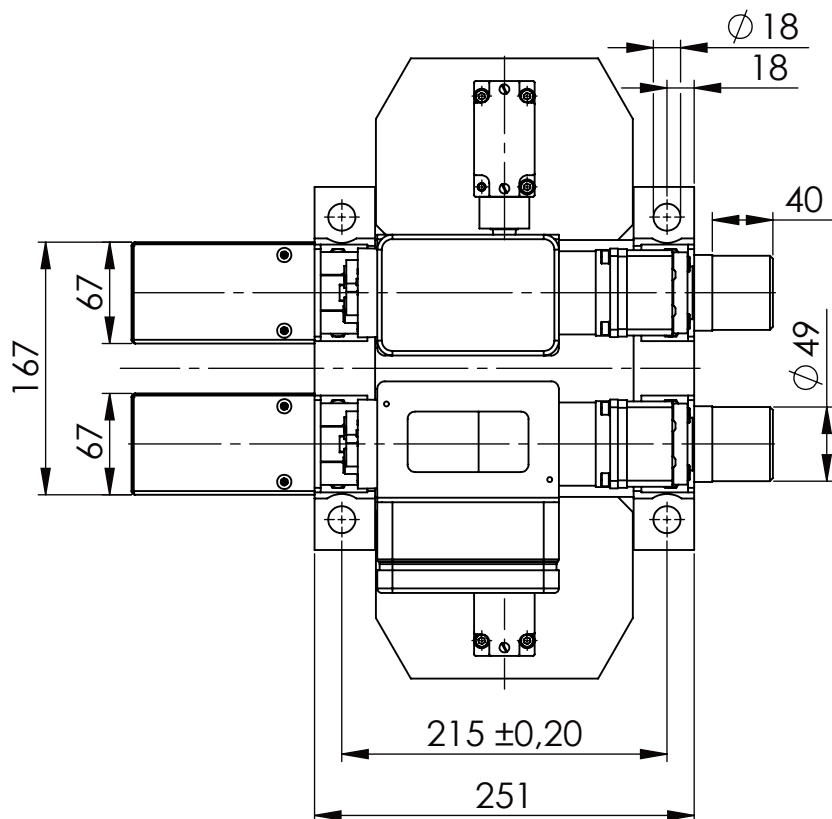
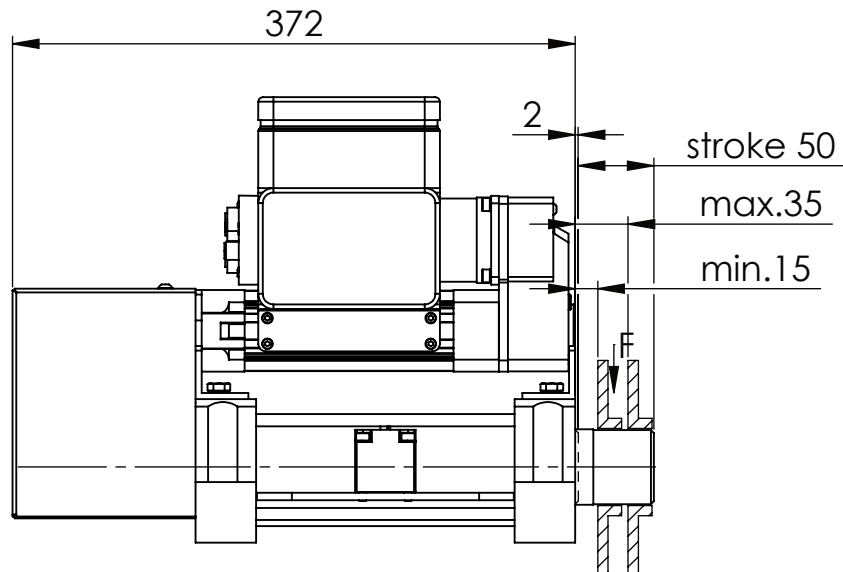


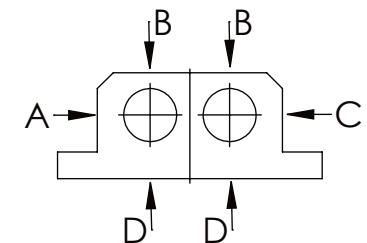
Socket Head Cap Screw DIN 912/DIN EN ISO 4762 - M16x60 - 8.8, Ma=90Nm,
Washer DIN 125/DIN EN ISO 7089 -A17, retain with Loctite or similar



please observe the fivefold security during welding of the Retaining plate



	A B C	D
F _{all} .	22.000 N	6.185 N
under static load		

TYPE OF DOKUMENT: DATA SHEET

SAFETY NOTE
DIN ISO 16016:2007-12

Buhl Maschinenbau e.K.
Carl-Zeiss-Str. 2
71065 Sindelfingen

GENERAL TOLERANCE
DIN ISO 2768 m-K

FROM		6	30	120	400	1000	2000
TO	6	30	120	400	1000	2000	4000
TOL.±	0.1	0.2	0.3	0.5	0.8	1.2	2.0

Date	Name
------	------

24.11.15 | G.Velleuer

26.11.15 | W.Buhl

BUHL

WEIGHT [KG]: 29.90

PROJEKTION 

DESIGNATION

SHEET-
FORMAT
DINA4

SAFETY LOCKING

ADDITIONAL DESIGNATION

SCALE
1:5

SA 50EMO T-1S

DRAWING-NO.:
03-SA 50 EMO T-1S 01-05

REV.
0