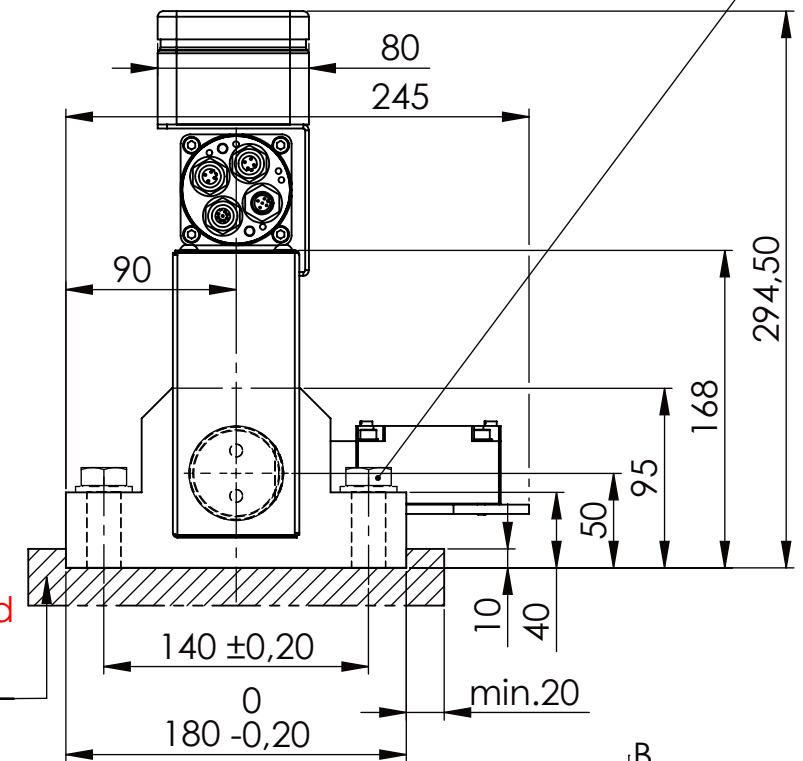
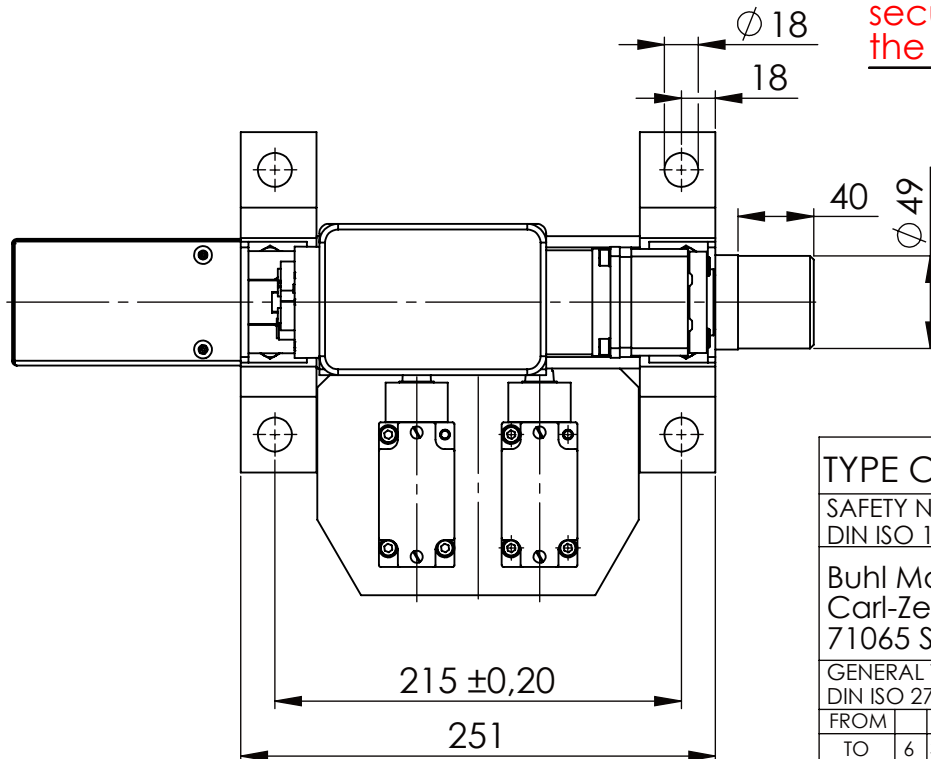


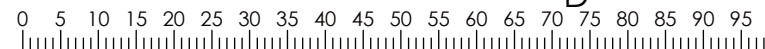
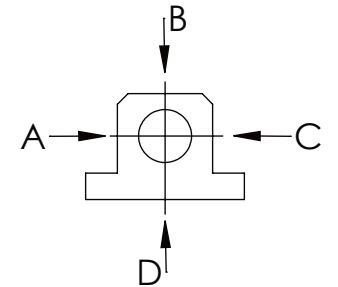
Hexagon Screw DIN 931/DIN EN ISO 4014-M16x60- 8.8, Ma=90Nm,
Washer DIN 125/DIN EN ISO 7089 -A17, retain with Loctite or similar



please observe the fivefold
security during welding of
the Retaining plate



	A B C	D
F all.	22.000 N	6.185 N
under static load		



TYPE OF DOKUMENT: DATA SHEET

WEIGHT [KG]: 16.59 PROJEKTION

SAFETY NOTE
DIN ISO 16016:2007-12

Date Name

DESIGNATION
SAFETY LOCKING

SHEET-FORMAT
DINA4

Buhl Maschinenbau e.K.
Carl-Zeiss-Str. 2
71065 Sindelfingen

DRAW. 24.11.15 G.Velleuer
APP. 26.11.15 W.Buhl

ADDITIONAL DESIGNATION
SA 50EMO

SCALE
1:4

GENERAL TOLERANCE
DIN ISO 2768 m-K

DRAWING-NO.:
03-SA 50 EMO 01-05

REV.
0

FROM	6	30	120	400	1000	2000
TO	6	30	120	400	1000	2000
TOL.±	0.1	0.2	0.3	0.5	0.8	1.2

REV.
0