

Technical drawing of the Socke Wash unit, showing front and side views with dimensions.

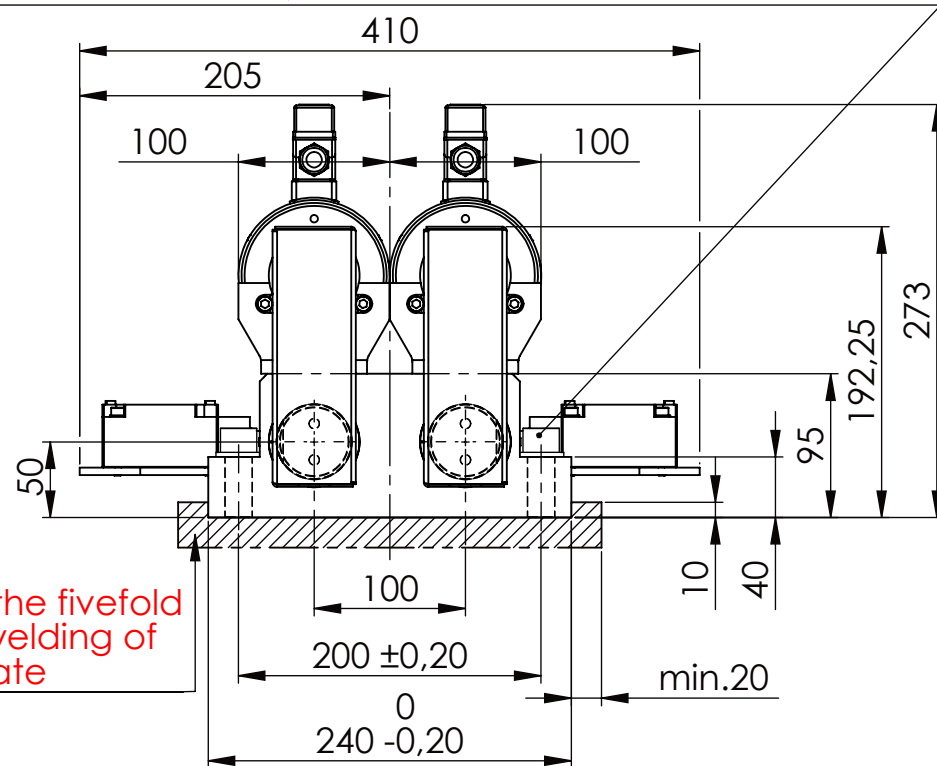
**Front View Dimensions:**

- Overall width: 331
- Overall height: 210
- Top panel width (excluding side panels):  $\phi 100(2x)$
- Top panel height: 12
- Stroke: 40
- Max. stroke: 35
- Min. stroke: 15

**Side View Dimensions:**

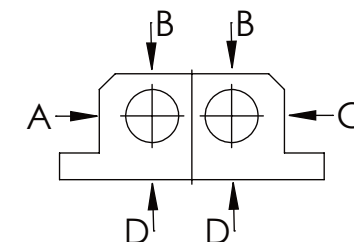
- Overall width: 331
- Overall height: 210
- Top panel width (excluding side panels):  $\phi 100(2x)$
- Top panel height: 12
- Stroke: 40
- Max. stroke: 35
- Min. stroke: 15

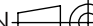

please observe the fivefold security during welding of the Retaining plate



longholedisk

	A B C	D
F <sub>all.</sub>	22.000 N	6.185 N
under static load		



TYPE OF DOKUMENT: DATA SHEET													WEIGHT [KG]: 45.58				PROJEKTION								
SAFETY NOTE DIN ISO 16016:2007-12								Date		Name			DESIGNATION				SHEET-FORMAT								
Buhl Maschinenbau e.K. Carl-Zeiss-Str. 2 71065 Sindelfingen							DRAW.	24.11.15		G.Velleuer			SAFETY LOCKING				DINA4								
							APP.	25.11.15		W.Buhl			ADDITIONAL DESIGNATION				SCALE								
GENERAL TOLERANCE DIN ISO 2768 m-K																				SA 50EMT-2S				1:5	
FROM		6	30	120	400	1000														2000					
TO		6	30	120	400	1000														2000	4000				
TOL.±		0.1	0.2	0.3	0.5	0.8														1.2	2.0				
													DRAWING-NO.: 03-SA 50 EM T-2S 01-05				REV. 0								