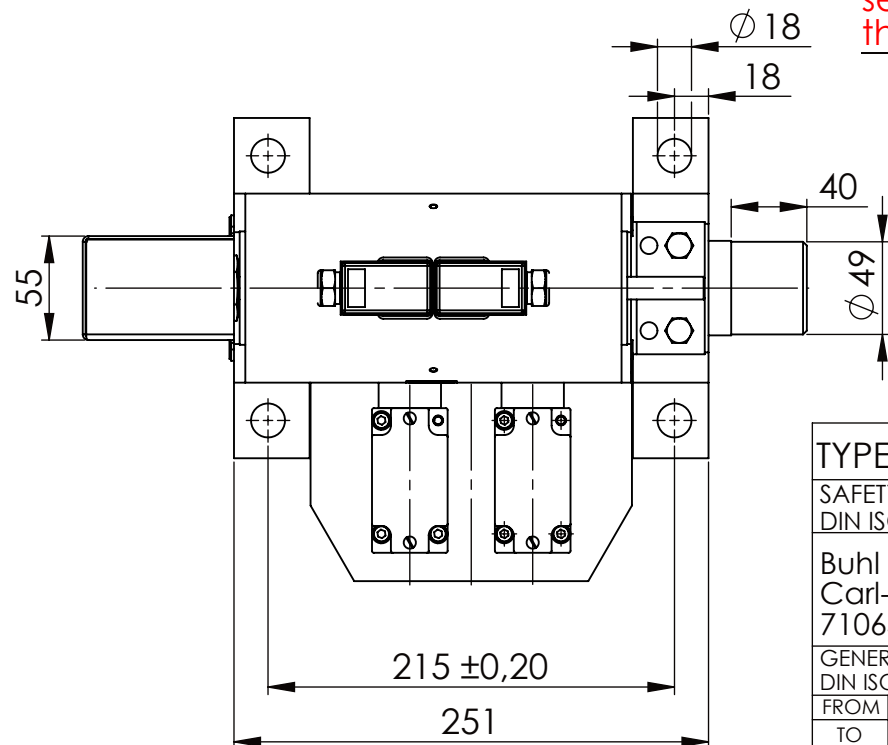
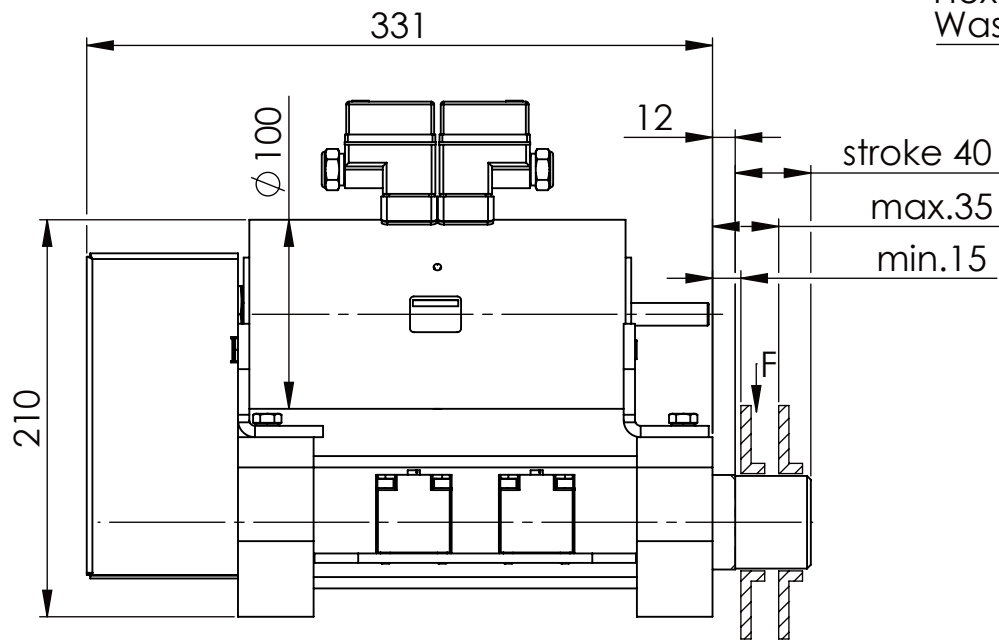
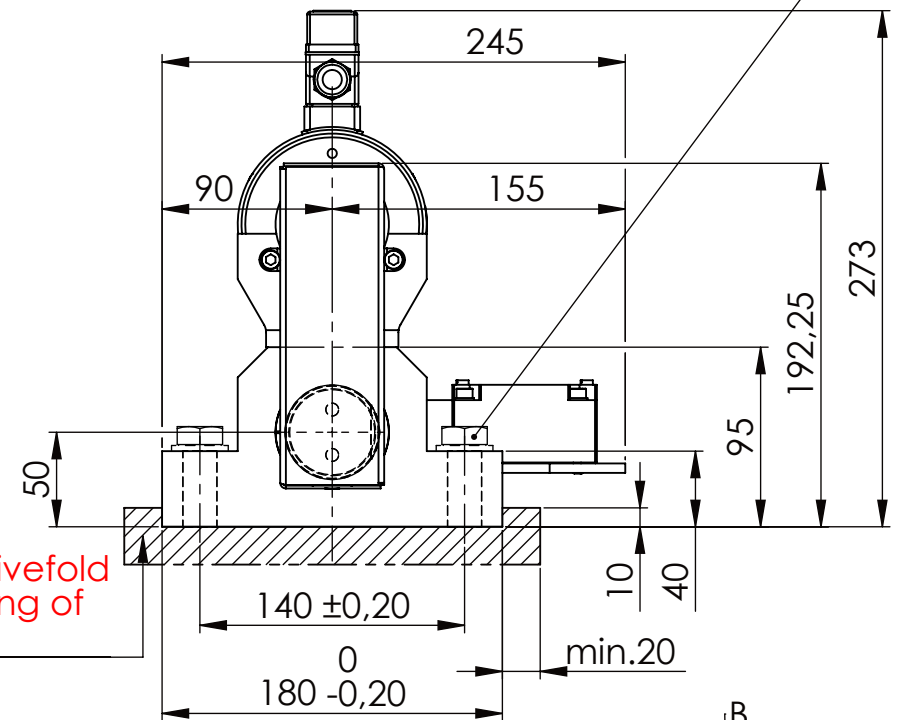


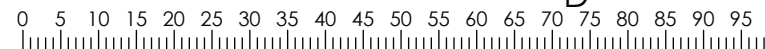
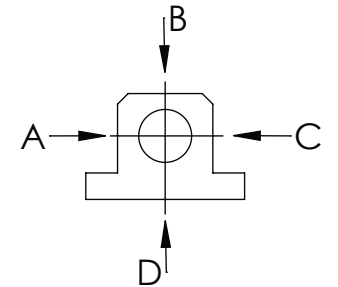
Hexagon Screw DIN 931/DIN EN ISO 4014-M16x60- 8.8, Ma=90Nm,  
Washer DIN 125/DIN EN ISO 7089 -A17, retain with Loctite or similar



please observe the fivefold  
security during welding of  
the Retaining plate



A B C	D
F all. 22.000 N	6.185 N
under static load	



TYPE OF DOKUMENT: DATA SHEET

WEIGHT [KG]: 24.27 PROJEKTION

SAFETY NOTE  
DIN ISO 16016:2007-12

	Date	Name
--	------	------

DESIGNATION

Buhl Maschinenbau e.K.  
Carl-Zeiss-Str. 2  
71065 Sindelfingen

DRAW.	17.02.16	G.Velleuer
APP.	19.02.16	W.Buhl

SAFETY LOCKING

GENERAL TOLERANCE  
DIN ISO 2768 m-K

BUHL

ADDITIONAL DESIGNATION

FROM	6	30	120	400	1000	2000
TO	6	30	120	400	1000	2000
TOL.±	0.1	0.2	0.3	0.5	0.8	1.2

Buhl Maschinenbau e.K.  
Sindelfingen

SA 50EM

DRAWING-NO.:  
03-SA 50 EM 01-03

SHEET-FORMAT  
DINA4

SCALE  
1:4

REV.  
0