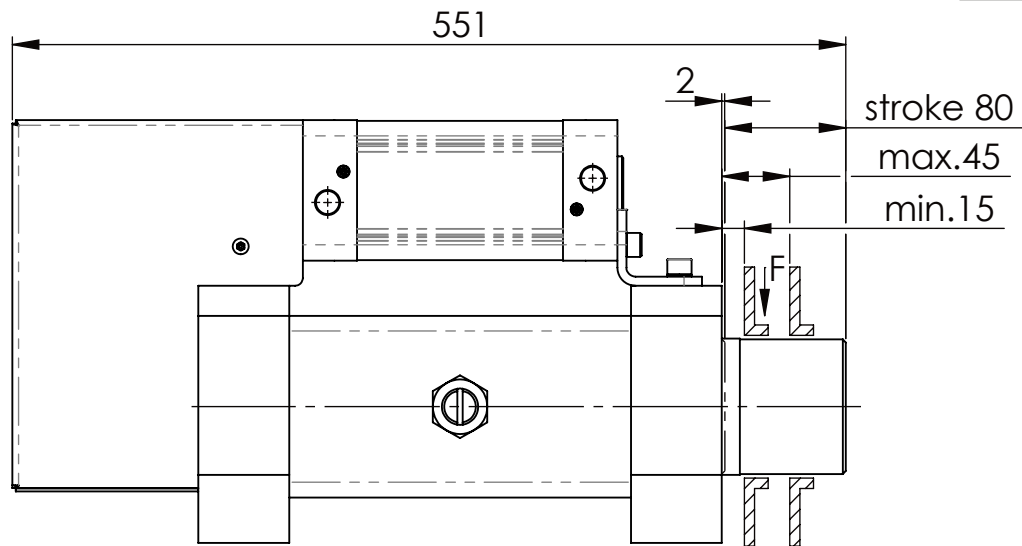
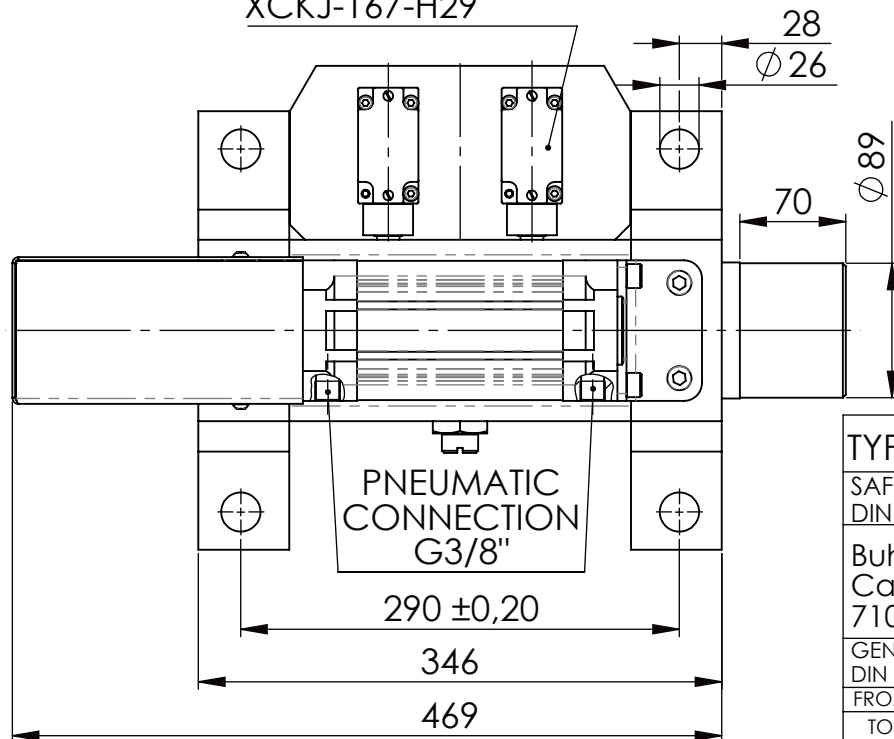


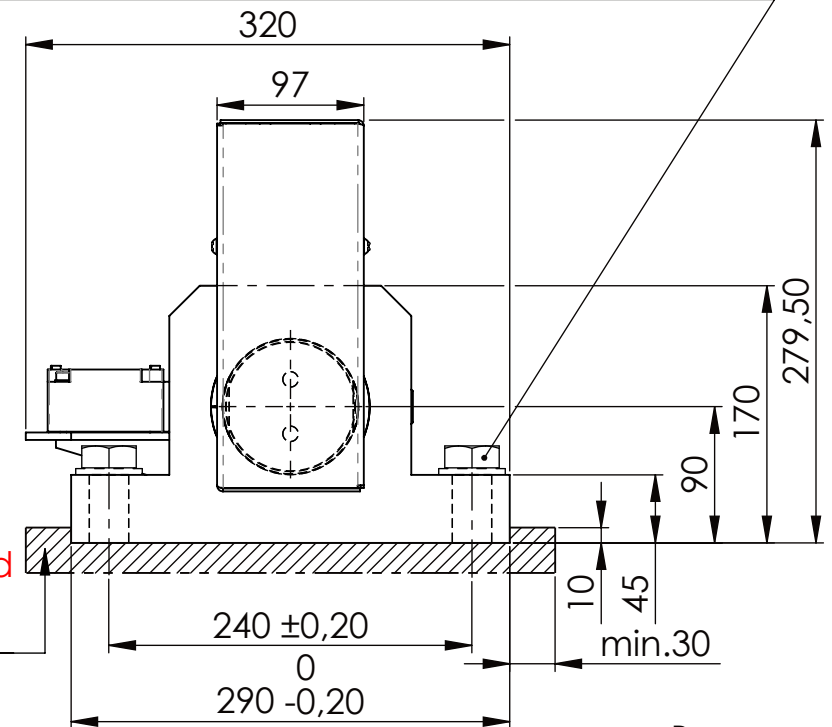
Hexagon Screw DIN 931/DIN EN ISO 4014-M24x90- 8.8, Ma=760Nm,
Washer DIN 125/DIN EN ISO 7089 -A25, retain with Loctite or similar



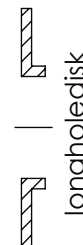
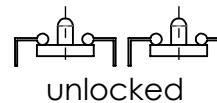
Fa.Telemecanique,
safety switch,
XCKJ-167-H29



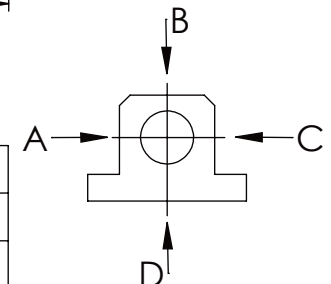
please observe the fivefold
security during welding of
the Retaining plate



synchronous
switching



A	B	C	D
F all.	130.000 N	30.000 N	
under static load			



TYPE OF DOKUMENT: DATA SHEET

SAFETY NOTE
DIN ISO 16016:2007-12

Buhl Maschinenbau e.K.
Carl-Zeiss-Str. 2
71065 Sindelfingen

GENERAL TOLERANCE
DIN ISO 2768 m-K

FROM	6	30	120	400	1000	2000
TO	6	30	120	400	1000	2000
TOL.±	0.1	0.2	0.3	0.5	0.8	1.2

Buhl
Maschinenbau
e.K.

BUHL

WEIGHT [KG]: 61.66

PROJECTION

DESIGNATION

SAFETY LOCKING

ADDITIONAL DESIGNATION

SA 90P

DRAWING-NO.:

02-SA 90 P 02-03

SHEET-
FORMAT
DINA4

SCALE
1:5

REV.
1