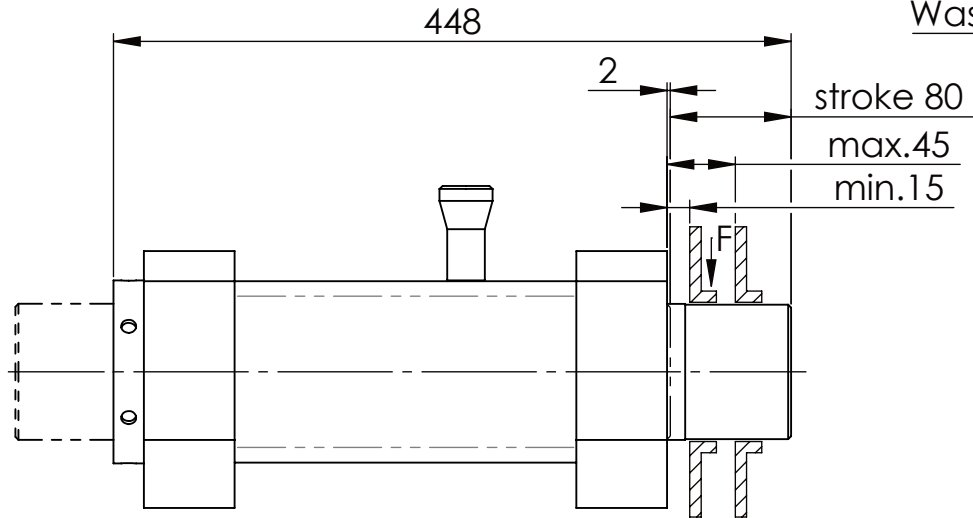
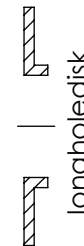
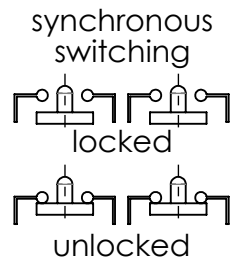
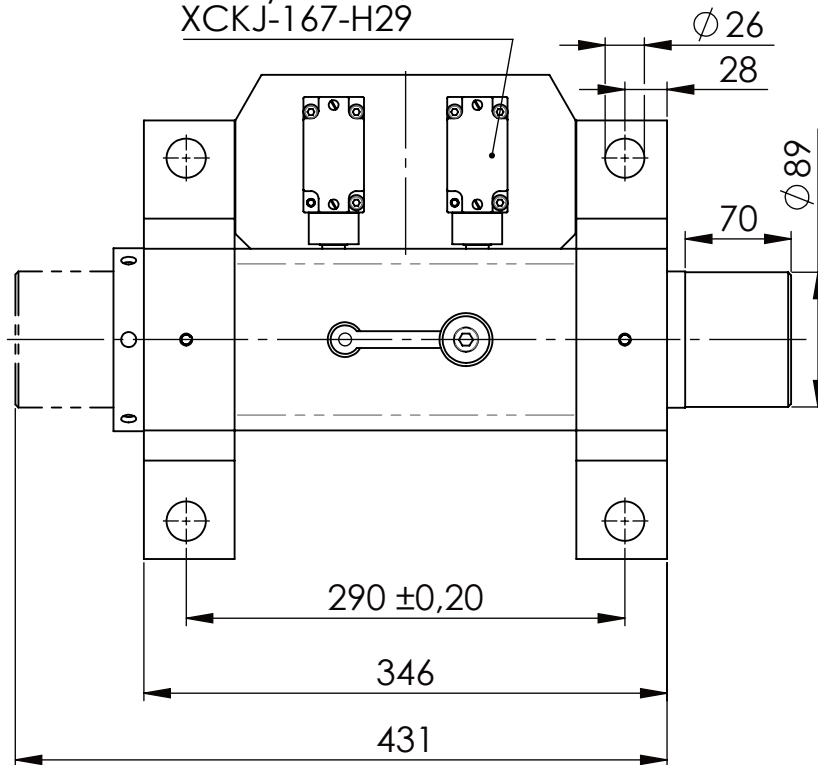
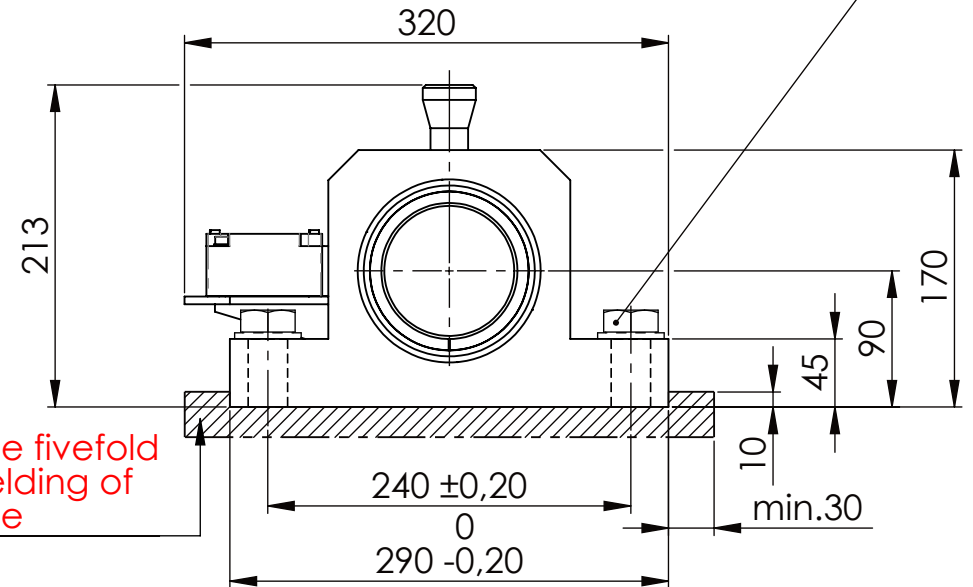


Hexagon Screw DIN 931/DIN EN ISO 4014-M24x90- 8.8, Ma=760Nm,
Washer DIN 125/DIN EN ISO 7089 -A25, retain with Loctite or similar

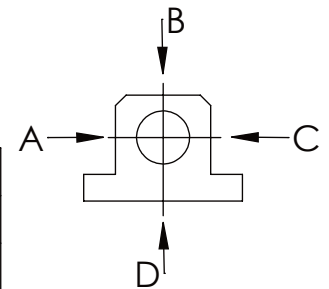


Fa. Telemecanique,
safety switch,
XCKJ-167-H29

please observe the fivefold
security during welding of
the Retaining plate



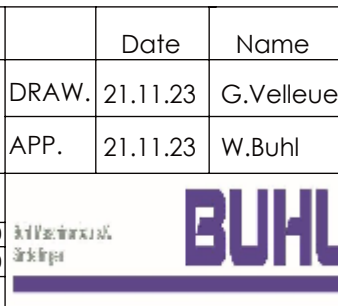
	A	B	C	D
F all.	130.000 N	30.000 N		
under static load				



TYPE OF DOKUMENT: DATA SHEET

WEIGHT [KG]: 52.29 PROJECTION:

SAFETY NOTE							
DIN ISO 16016:2007-12							
Buhl Maschinenbau e.K.							
Carl-Zeiss-Str. 2							
71065 Sindelfingen							
GENERAL TOLERANCE							
DIN ISO 2768 m-K							
FROM		6	30	120	400	1000	2000
TO	6	30	120	400	1000	2000	4000
TOL.±	0.1	0.2	0.3	0.5	0.8	1.2	2.0



DESIGNATION	SHEET-FORMAT
SAFETY LOCKING	DINA4
ADDITIONAL DESIGNATION	SCALE
SA 90H	1:5
DRAWING-NO.:	REV.
02-SA 90 H 02-03	1