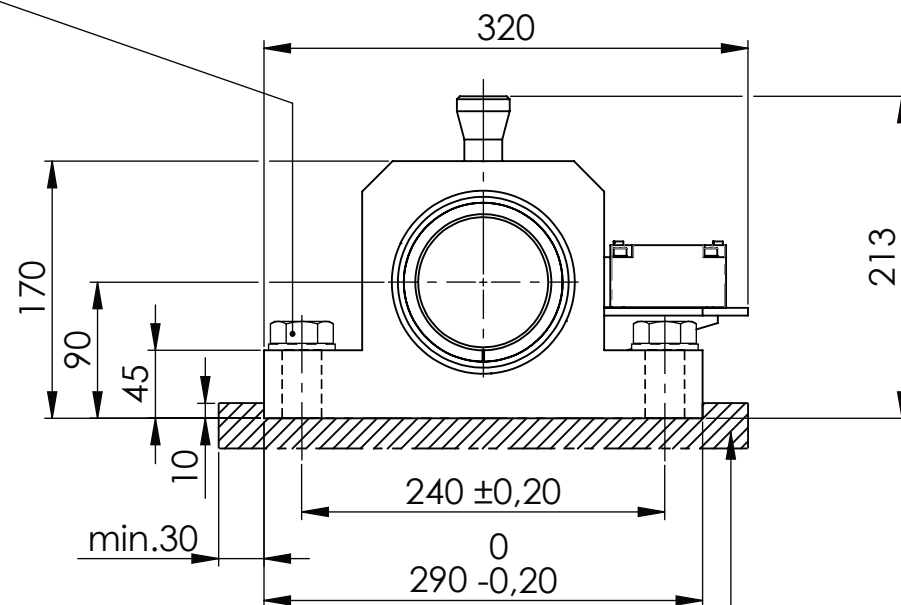
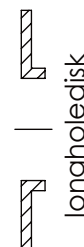
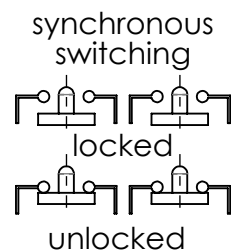


Fa. Telemecanique,
safety switch,
XCKJ-167-H29

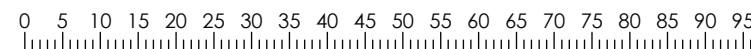
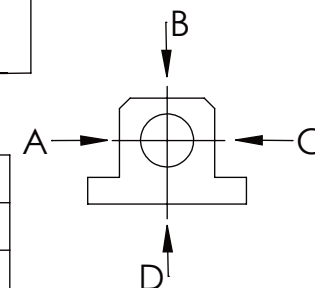
Hexagon Screw DIN 931/DIN EN ISO 4014-M24x90- 8.8, Ma=760Nm,
Washer DIN 125/DIN EN ISO 7089 -A25, retain with Loctite or similar



please observe the fivefold
security during welding of
the Retaining plate



A	B	C	D
F all.	130.000 N	30.000 N	
under static load			



TYPE OF DOKUMENT: DATA SHEET

SAFETY NOTE
DIN ISO 16016:2007-12

Buhl Maschinenbau e.K.
Carl-Zeiss-Str. 2
71065 Sindelfingen

	Date	Name
DRAW.	21.11.23	G.Velleuer
APP.	21.11.23	W.Buhl

GENERAL TOLERANCE
DIN ISO 2768 m-K

FROM	6	30	120	400	1000	2000
TO	6	30	120	400	1000	2000
TOL.±	0.1	0.2	0.3	0.5	0.8	1.2



WEIGHT [KG]: 52.29 PROJECTION

DESIGNATION	SHEET-FORMAT
SAFETY LOCKING	DINA4
ADDITIONAL DESIGNATION	SCALE
SA 90H	1:5
DRAWING-NO.:	REV.
02-SA 90 H 01-03	1