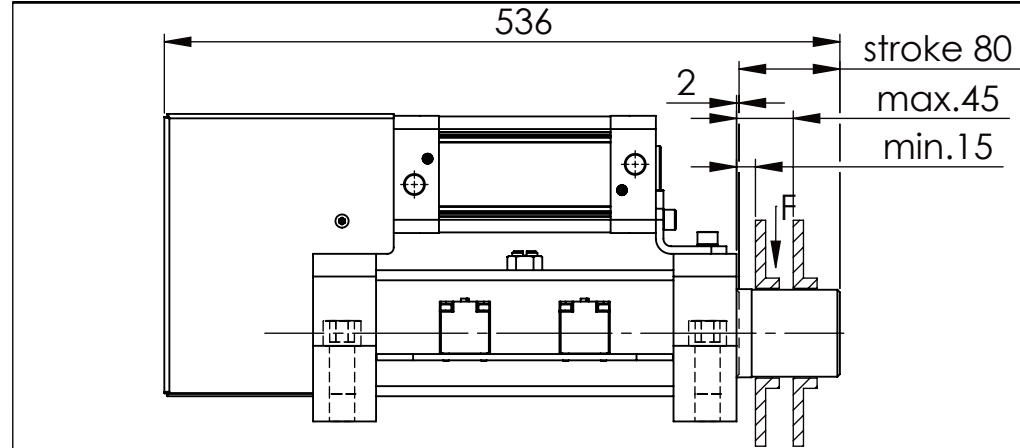
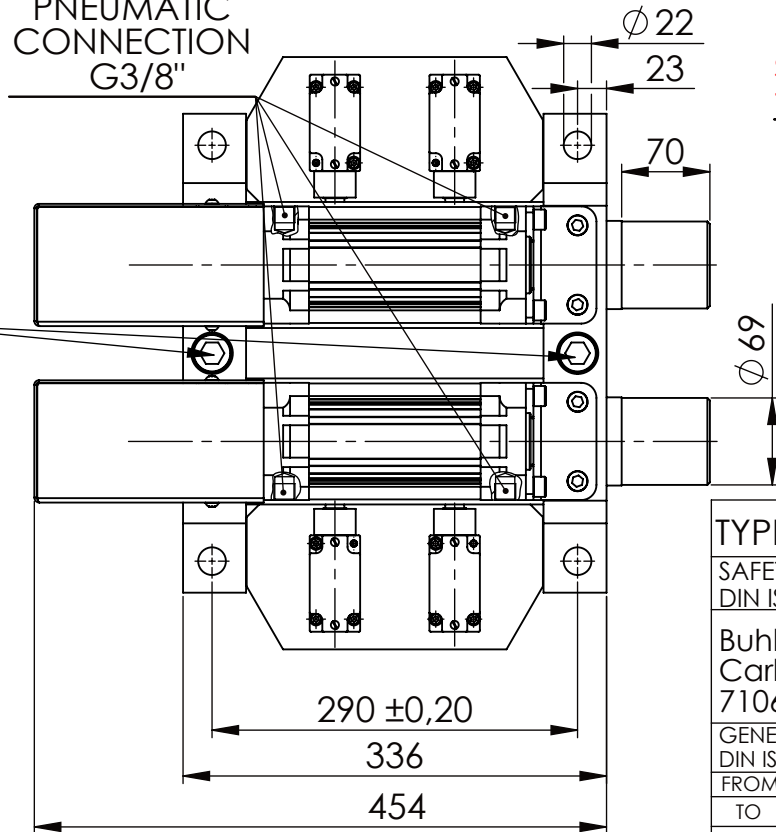


Hexagon Screw DIN 931/DIN EN ISO 4014-M20x90- 8.8, Ma=320Nm,
Washer DIN 125/DIN EN ISO 7089 -A21, retain with Loctite or similar

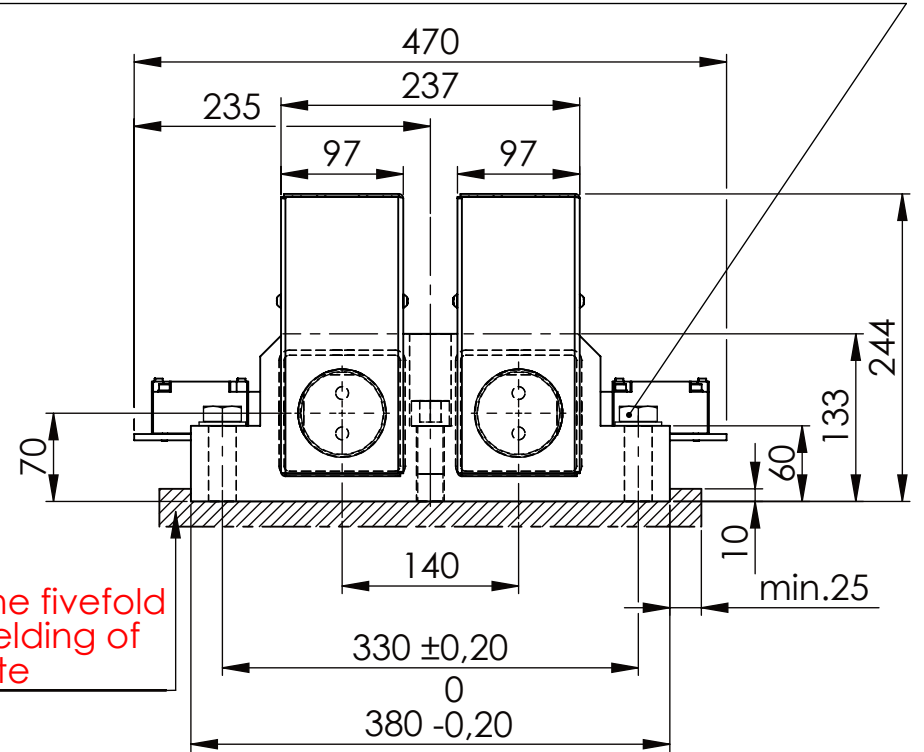
Socket Head Cap Screw DIN 912/DIN EN ISO 4762 - M20x90-8.8,
Ma=320Nm, retain with Loctite or similar



PNEUMATIC
CONNECTION
G3/8"

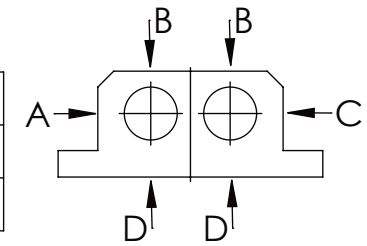


please observe the fivefold
security during welding of
the Retaining plate



longholedisk

A B C	D
F all. 60.000 N	17.000 N
under static load	



0 5 10 15 20 25 30 35 40 45 50 55 60 65 70 75 80 85 90 95

TYPE OF DOKUMENT: DATA SHEET

WEIGHT [KG]: 77.51

PROJECTION

SAFETY NOTE
DIN ISO 16016:2007-12

Date

Name

DESIGNATION

SHEET-
FORMAT
DINA4

Buhl Maschinenbau e.K.
Carl-Zeiss-Str. 2
71065 Sindelfingen

DRAW.

26.01.17

G.Velleuer

SAFETY LOCKING

APP.

27.01.17

W.Buhl

ADDITIONAL DESIGNATION

SCALE

GENERAL TOLERANCE
DIN ISO 2768 m-K

BUHL

SA 70PT-2S

1:6

FROM	6	30	120	400	1000	2000
TO	6	30	120	400	1000	2000
TOL.±	0.1	0.2	0.3	0.5	0.8	1.2
	0.2	0.3	0.5	0.8	1.2	2.0

Buhl Maschinenbau e.K.
Sindelfingen

DRAWING-NO.:

REV.

02-SA 70 PT-2S 01-03

0