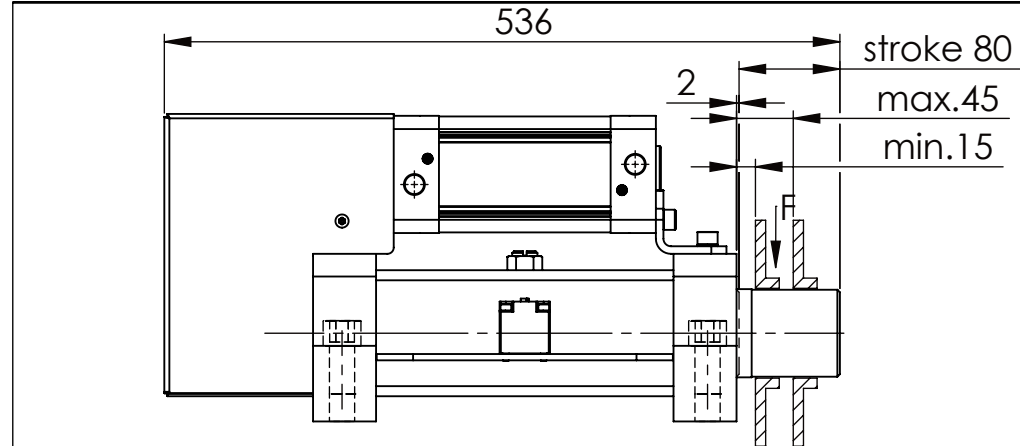
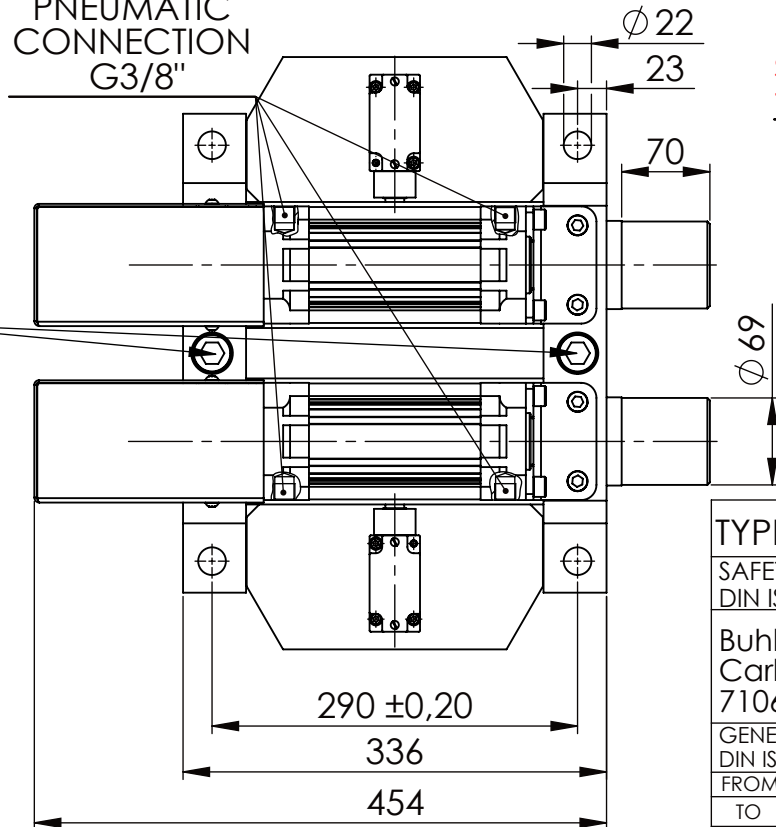


Hexagon Screw DIN 931/DIN EN ISO 4014-M20x90- 8.8, Ma=320Nm,  
Washer DIN 125/DIN EN ISO 7089 -A21, retain with Loctite or similar

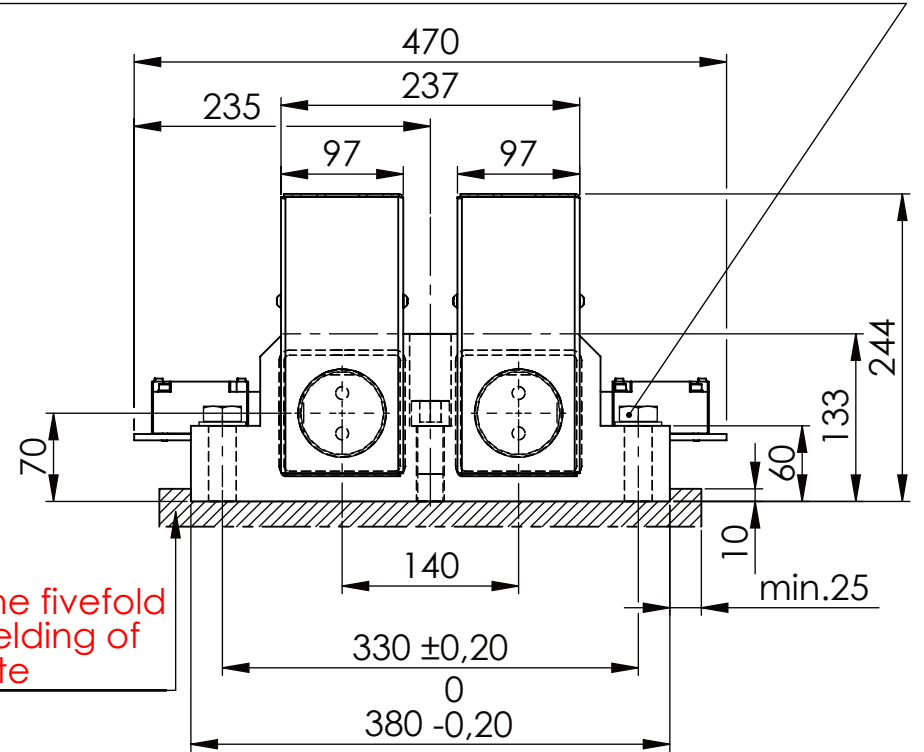
Socket Head Cap Screw DIN 912/DIN EN ISO 4762 - M20x90-8.8,  
Ma=320Nm, retain with Loctite or similar



PNEUMATIC  
CONNECTION  
G3/8"

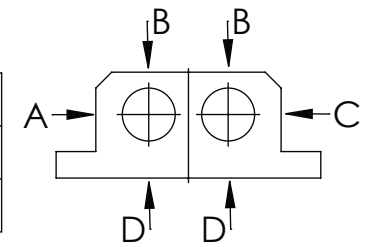


please observe the fivefold  
security during welding of  
the Retaining plate



longholedisk

A B C	D
F all. 60.000 N	17.000 N
under static load	



TYPE OF DOKUMENT: DATA SHEET

SAFETY NOTE  
DIN ISO 16016:2007-12

Buhl Maschinenbau e.K.  
Carl-Zeiss-Str. 2  
71065 Sindelfingen

GENERAL TOLERANCE  
DIN ISO 2768 m-K

FROM	6	30	120	400	1000	2000
TO	6	30	120	400	1000	2000
TOL.±	0.1	0.2	0.3	0.5	0.8	1.2

Buhl Maschinenbau e.K.  
Sindelfingen

**BUHL**

Date Name  
26.01.17 G.Velleuer

APP. 27.01.17 W.Buhl

WEIGHT [KG]: 77.33

PROJECTION

DESIGNATION

SAFETY LOCKING

ADDITIONAL DESIGNATION

SA 70PT-1S

DRAWING-NO.:

02-SA 70 PT-1S 01-05

SHEET-  
FORMAT  
DINA4

SCALE

1:6

REV.

0