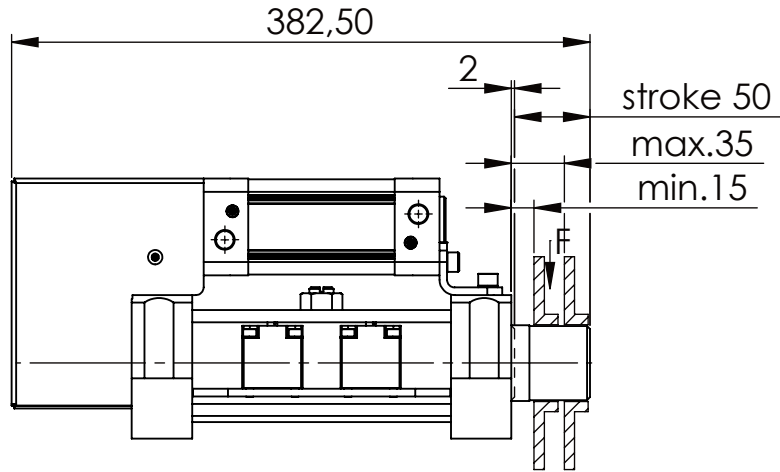
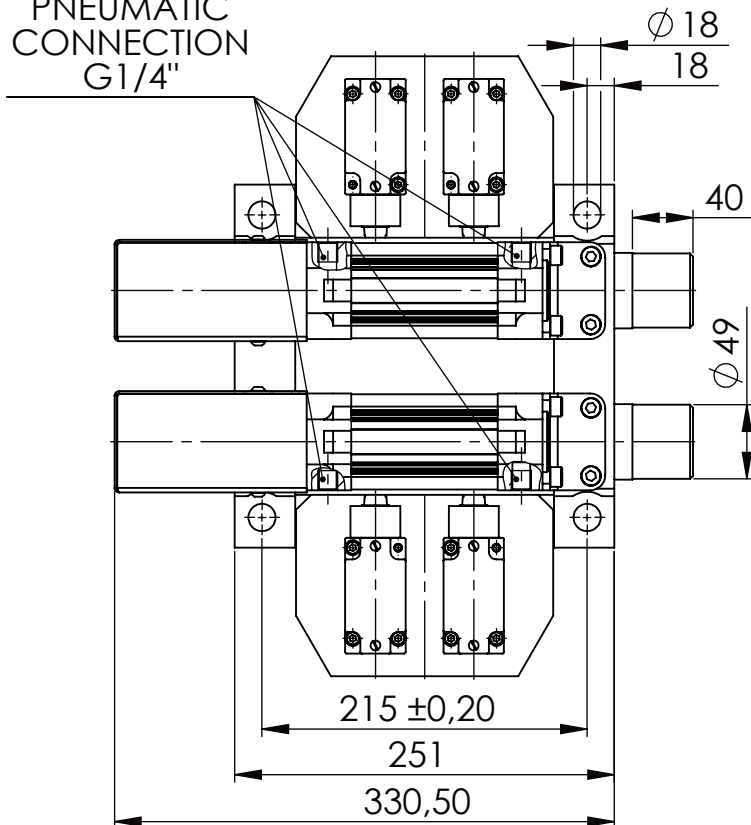


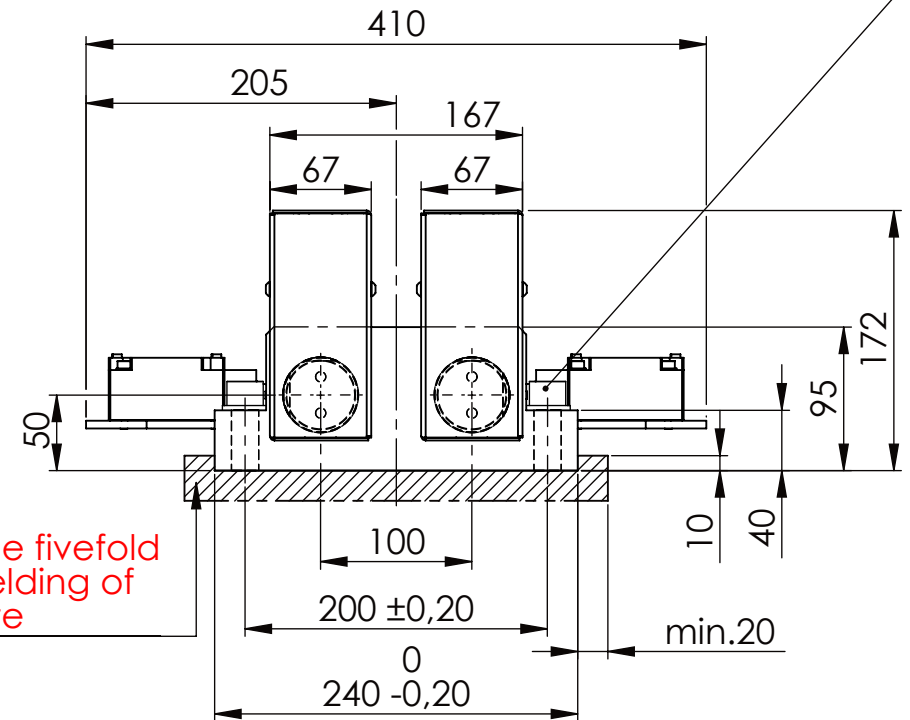
Socket Head Cap Screw DIN 912/DIN EN ISO 4762 - M16x60 - 8.8, Ma=90Nm,
Washer DIN 125/DIN EN ISO 7089 -A17, retain with Loctite or similar



PNEUMATIC
CONNECTION
G1/4"

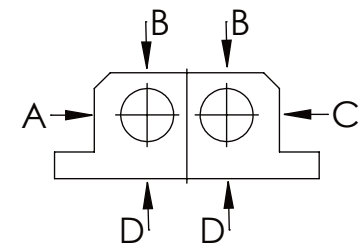


please observe the fivefold
security during welding of
the Retaining plate



longholedisk

A B C	D
F all. 22.000 N	6.185 N
under static load	



TYPE OF DOKUMENT: DATA SHEET

WEIGHT [KG]: 30.36

PROJEKTION

SAFETY NOTE DIN ISO 16016:2007-12		Date	Name
Buhl Maschinenbau e.K. Carl-Zeiss-Str. 2 71065 Sindelfingen		DRAW. 29.09.15	G.Velleuer
GENERAL TOLERANCE DIN ISO 2768 m-K		APP. 01.10.15	W.Buhl
FROM	6 30 120 400 1000 2000		
TO	6 30 120 400 1000 2000 4000		
TOL.±	0.1 0.2 0.3 0.5 0.8 1.2 2.0		

DESIGNATION

SAFETY LOCKING

ADDITIONAL DESIGNATION
SA 50PT-2S

DRAWING-NO.:
02-SA 50 PT-2S 01-05

SHEET-
FORMAT
DINA4

SCALE
1:5

REV.
0