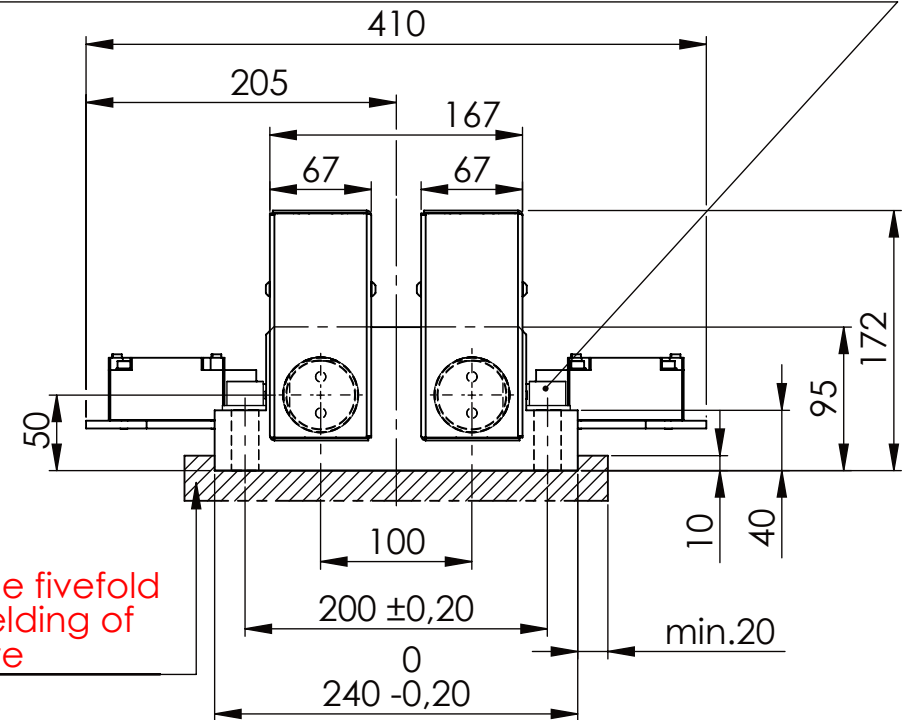
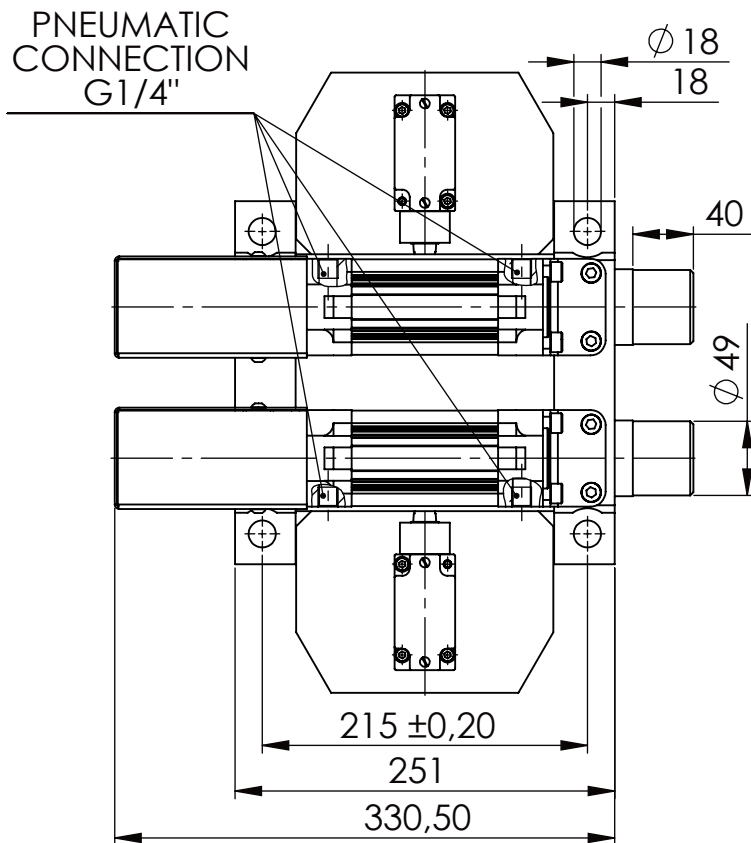
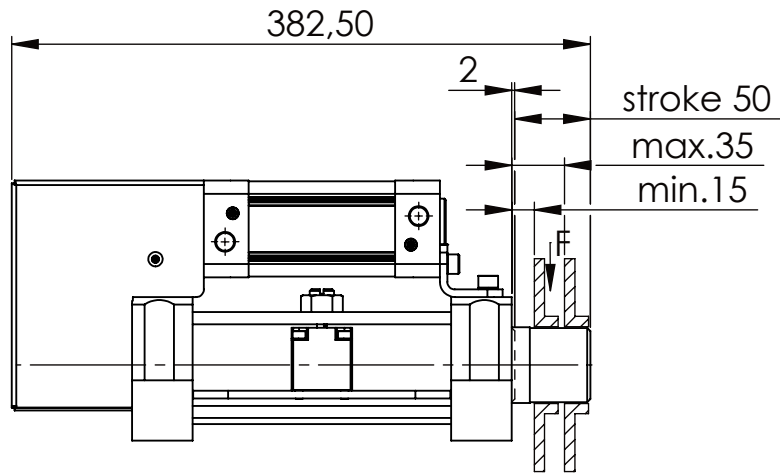


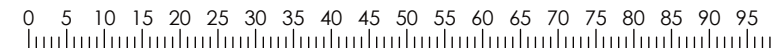
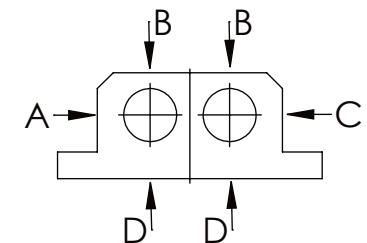
Socket Head Cap Screw DIN 912/DIN EN ISO 4762 - M16x60 - 8.8, Ma=90Nm,  
Washer DIN 125/DIN EN ISO 7089 -A17, retain with Loctite or similar



please observe the fivefold  
security during welding of  
the Retaining plate



A B C	D
F all. 22.000 N	6.185 N
under static load	



TYPE OF DOKUMENT: DATA SHEET

WEIGHT [KG]: 30.12

PROJEKTION

SAFETY NOTE  
DIN ISO 16016:2007-12

Date Name

DESIGNATION

SHEET-  
FORMAT  
DINA4

Buhl Maschinenbau e.K.  
Carl-Zeiss-Str. 2  
71065 Sindelfingen

DRAW. 29.09.15 G.Velleuer  
APP. 01.10.15 W.Buhl

SAFETY LOCKING

ADDITIONAL DESIGNATION

SCALE

GENERAL TOLERANCE  
DIN ISO 2768 m-K

BUHL

SA 50PT-1S

1:5

FROM	6	30	120	400	1000	2000
TO	6	30	120	400	1000	2000
TOL.±	0.1	0.2	0.3	0.5	0.8	1.2

DRAWING-NO.:  
02-SA 50 PT-1S 01-03

REV.  
0