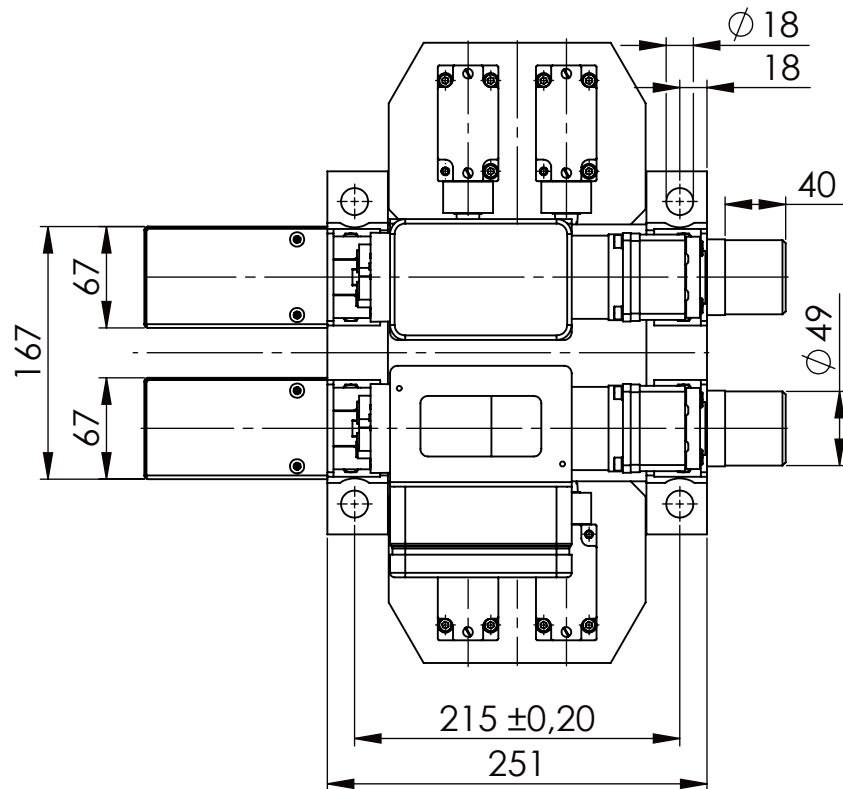
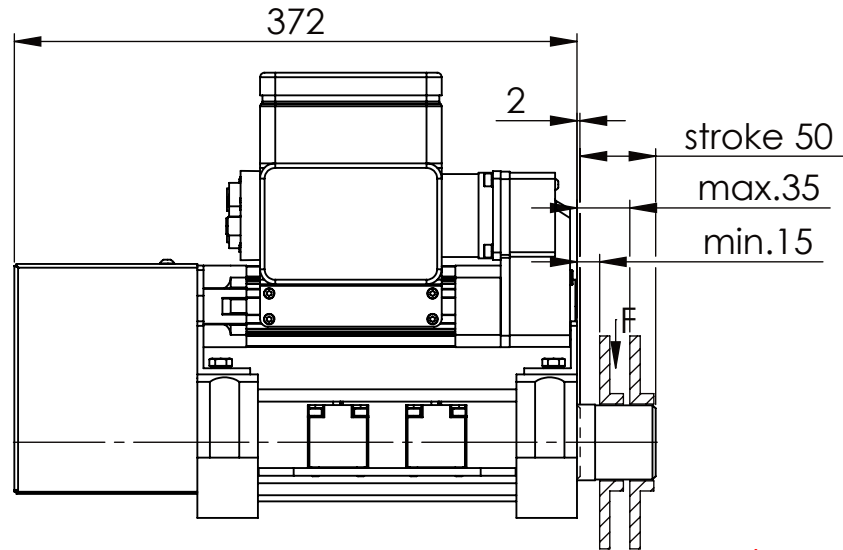
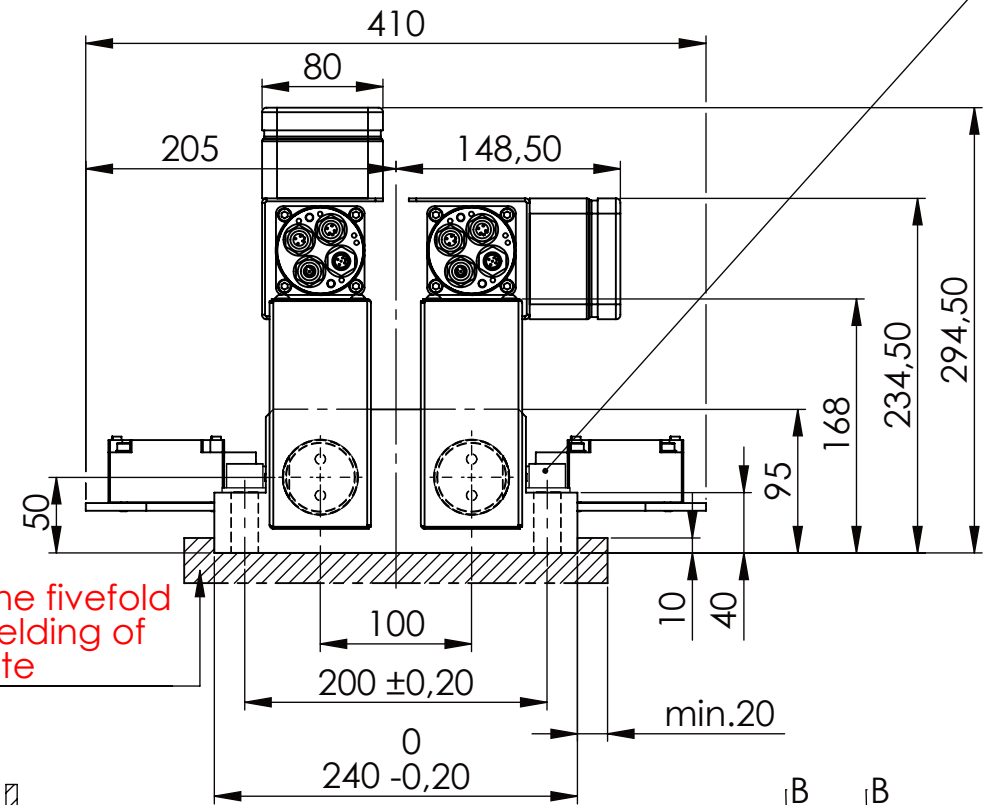


Socket Head Cap Screw DIN 912/DIN EN ISO 4762 - M16x60 - 8.8, Ma=90Nm,  
Washer DIN 125/DIN EN ISO 7089 -A17, retain with Loctite or similar

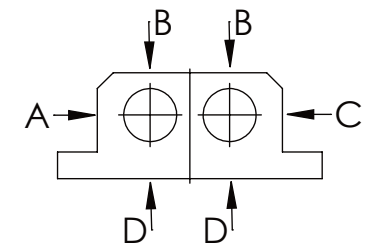


please observe the fivefold  
security during welding of  
the Retaining plate



longholedisk

A	B	C	D
F all.	22.000 N	6.185 N	
under static load			



TYPE OF DOKUMENT: DATA SHEET

SAFETY NOTE  
DIN ISO 16016:2007-12

Buhl Maschinenbau e.K.  
Carl-Zeiss-Str. 2  
71065 Sindelfingen

GENERAL TOLERANCE  
DIN ISO 2768 m-K

FROM	6	30	120	400	1000	2000
TO	6	30	120	400	1000	2000
TOL.±	0.1	0.2	0.3	0.5	0.8	1.2

Date Name

DRAW. 24.11.15 G.Velleuer

APP. 27.11.15 W.Buhl

**BUHL**

WEIGHT [KG]: 30.22

PROJEKTION

DESIGNATION

SAFETY LOCKING

ADDITIONAL DESIGNATION

SA 50EMO T-2S

DRAWING-NO.:

02-SA 50 EMO T-2S 01-05

SHEET-FORMAT

DINA4

SCALE

1:5

REV.

0