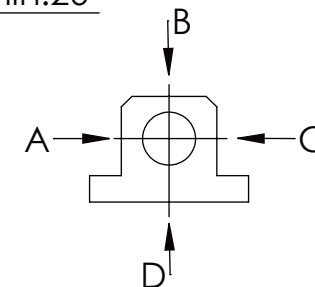


Technical drawing of a mechanical assembly, likely a pump or motor component, showing a side view. The drawing includes the following dimensions and labels:

- 372**: Overall width dimension.
- 2**: Small dimension indicating a gap or offset.
- Hub 50**: Dimension indicating the hub height.
- max.35**: Maximum dimension for a specific part.
- min.15**: Minimum dimension for a specific part.
- F**: Force vector applied to the assembly.
- Sechskant U-Scheibe**: Label for the hexagonal U-washer.

Technical drawing of a mechanical assembly, likely a microscope head, showing a side view and a top view. The side view shows a central body with a horizontal extension on the left and a vertical extension on the right. The top view shows a rectangular base with four mounting holes. Dimensions include a total width of 251, a central width of $215 \pm 0,20$, a vertical extension diameter of $\varnothing 18$, and a vertical extension length of 40. A red stamp in the top right corner reads "Hochschule für Angewandte Wissenschaften".

	A B C	D
F _{zul.}	22.000 N	6.185 N
bei stat. Belastung		



Revision
0