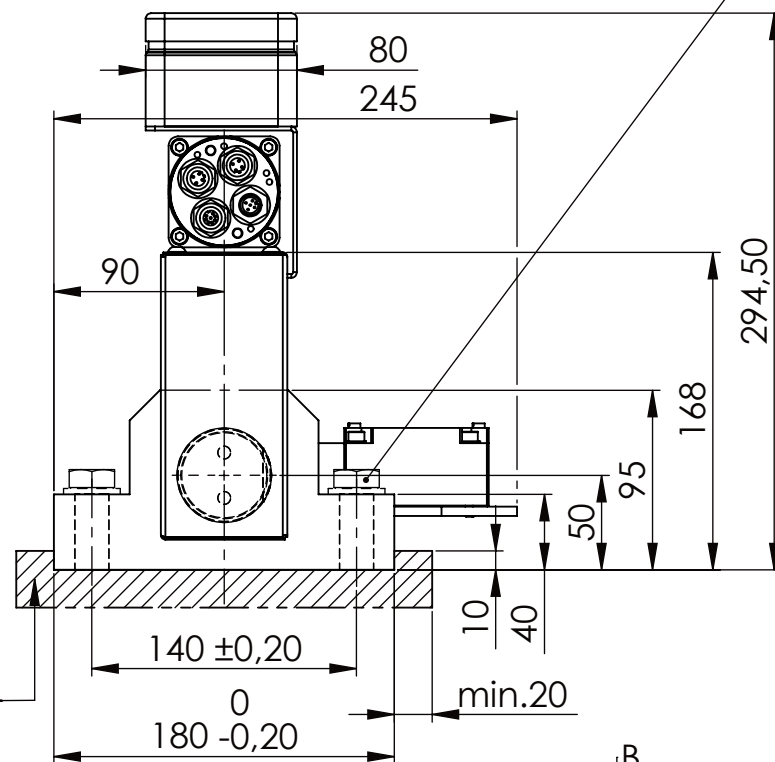
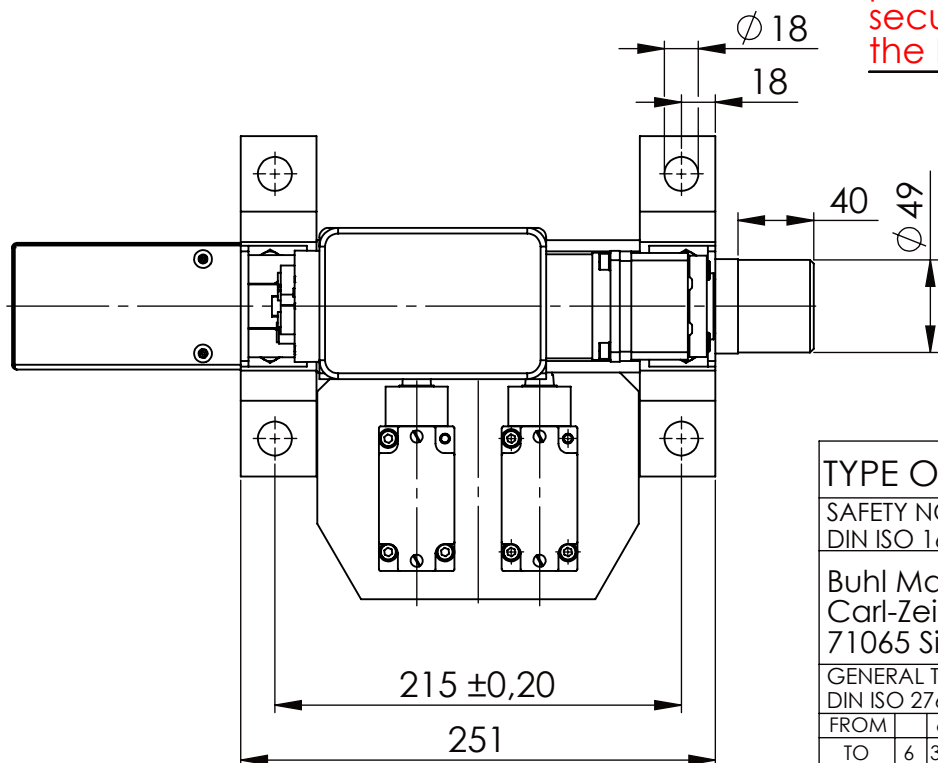


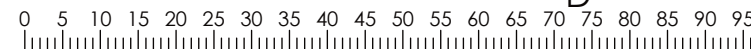
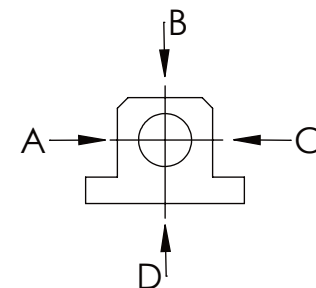
Hexagon Screw DIN 931/DIN EN ISO 4014-M16x60- 8.8, Ma=90Nm,
Washer DIN 125/DIN EN ISO 7089 -A17, retain with Loctite or similar



please observe the fivefold
security during welding of
the Retaining plate



| | | |
|-------------------|----------|---------|
| | A B C | D |
| F all. | 22.000 N | 6.185 N |
| under static load | | |



TYPE OF DOKUMENT: DATA SHEET

WEIGHT [KG]: 16.59 PROJEKTION

SAFETY NOTE
DIN ISO 16016:2007-12

Date Name

DESIGNATION

SHEET-
FORMAT
DINA4

Buhl Maschinenbau e.K.
Carl-Zeiss-Str. 2
71065 Sindelfingen

DRAW. 24.11.15 G.Velleuer

SAFETY LOCKING

APP. 26.11.15 W.Buhl

ADDITIONAL DESIGNATION

SCALE

GENERAL TOLERANCE
DIN ISO 2768 m-K

BUHL

SA 50EMO

1:4

| | | | | | | |
|-------|-----|-----|-----|-----|------|------|
| FROM | 6 | 30 | 120 | 400 | 1000 | 2000 |
| TO | 6 | 30 | 120 | 400 | 1000 | 2000 |
| TOL.± | 0.1 | 0.2 | 0.3 | 0.5 | 0.8 | 1.2 |

BUHL

DRAWING-NO.:
02-SA 50 EMO 01-03

REV.
0