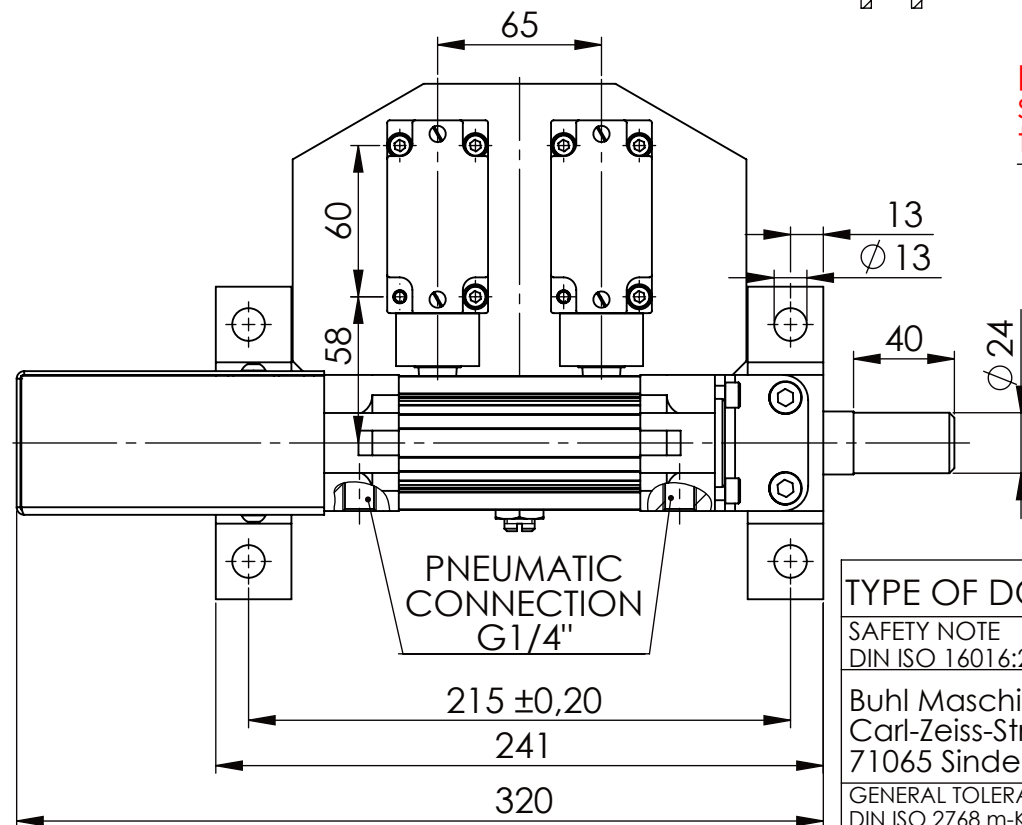
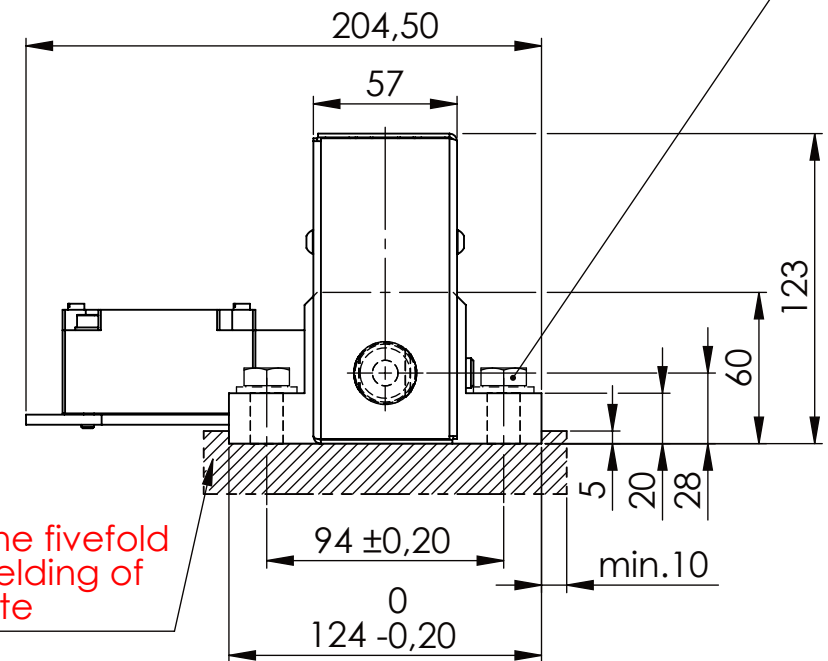
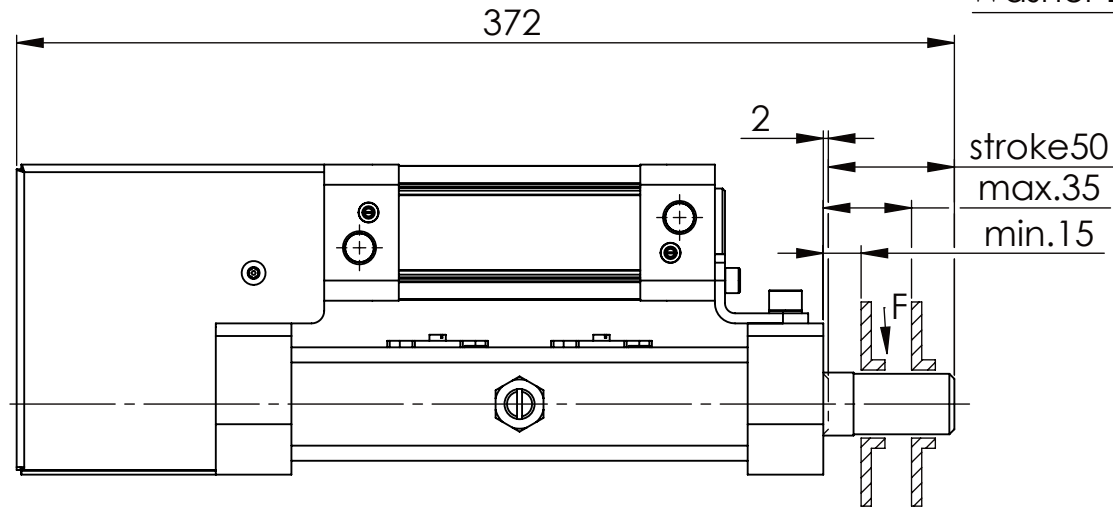
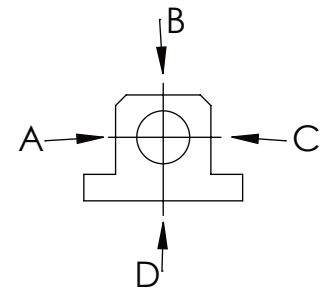


Hexagon Screw DIN 931/DIN EN ISO 4014-M12x40- 8.8, Ma=40Nm,
Washer DIN 125/DIN EN ISO 7089 -A13, retain with Loctite or similar



longholedisk

A B C D
F all. 3.000 N
under static load



0 5 10 15 20 25 30 35 40 45 50 55 60 65 70 75 80 85 90 95

TYPE OF DOKUMENT: DATA SHEET

WEIGHT [KG]: 7.31

PROJECTION

SAFETY NOTE
DIN ISO 16016:2007-12

Date

Name

DESIGNATION

SHEET-FORMAT

Buhl Maschinenbau e.K.
Carl-Zeiss-Str. 2
71065 Sindelfingen

DRAW.

10.03.15

G.Velleuer

SAFETY LOCKING

DINA4

APP.

11.03.15

W.Buhl

ADDITIONAL DESIGNATION

SCALE

GENERAL TOLERANCE
DIN ISO 2768 m-K

BUHL

SA 25P

1:3

| | | | | | | |
|-------|-----|-----|-----|-----|------|------|
| FROM | 6 | 30 | 120 | 400 | 1000 | 2000 |
| TO | 6 | 30 | 120 | 400 | 1000 | 2000 |
| TOL.± | 0.1 | 0.2 | 0.3 | 0.5 | 0.8 | 1.2 |

Buhl Maschinenbau e.K.
Sindelfingen

DRAWING-NO.:

REV.

02-SA 25 P 02-03

0