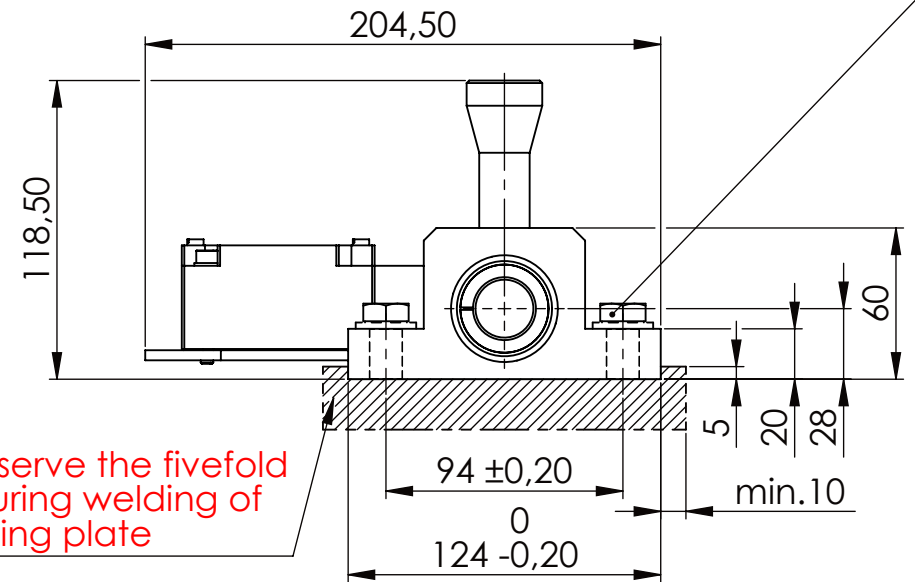
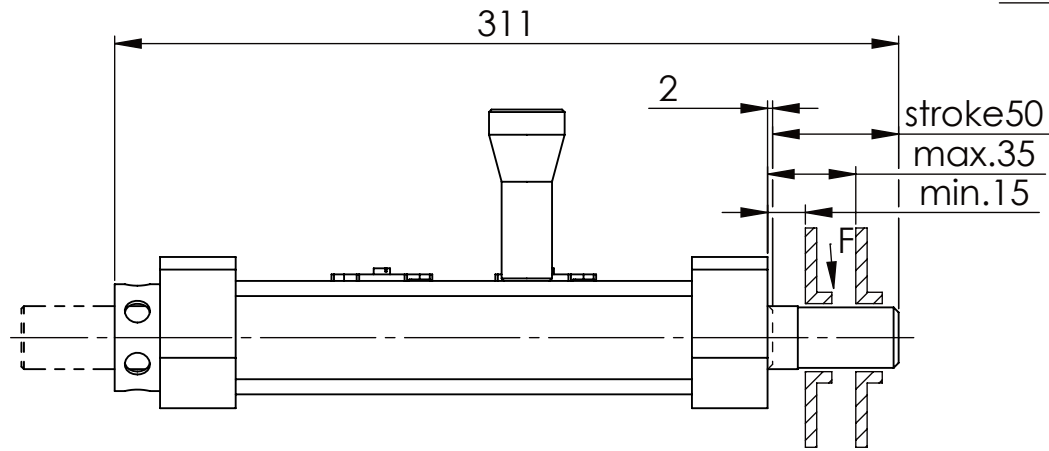
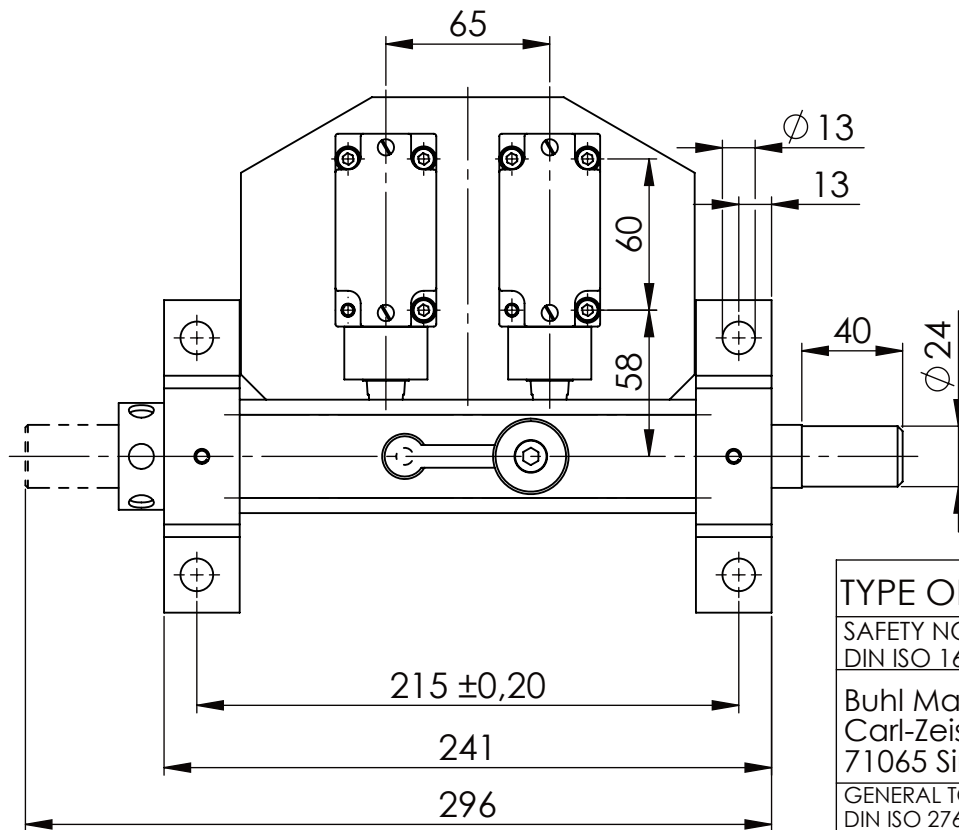


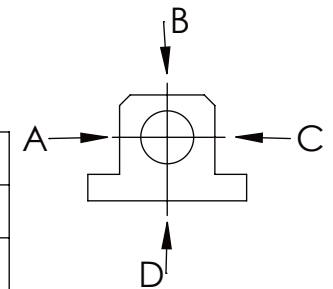
Hexagon Screw DIN 931/DIN EN ISO 4014-M12x40- 8.8, Ma=40Nm,  
Washer DIN 125/DIN EN ISO 7089 -A13, retain with Loctite or similar



please observe the fivefold  
security during welding of  
the Retaining plate



	A B C D
F all.	3.000 N
under static load	



TYPE OF DOKUMENT: DATA SHEET

WEIGHT [KG]: 5.09

PROJECTION

SAFETY NOTE  
DIN ISO 16016:2007-12

Date

Name

DESIGNATION

SHEET-  
FORMAT

Buhl Maschinenbau e.K.  
Carl-Zeiss-Str. 2  
71065 Sindelfingen

DRAW.

06.03.15

G.Velleuer

SAFETY LOCKING

DINA4

APP.

06.03.15

W.Buhl

ADDITIONAL DESIGNATION

SCALE

GENERAL TOLERANCE  
DIN ISO 2768 m-K

Buhl Maschinenbau e.K.  
Sindelfingen

**BUHL**

SA 25H

1:3

DRAWING-NO.:

REV.

02-SA 25 H 02-03

0

FROM	6	30	120	400	1000	2000
TO	6	30	120	400	1000	2000
TOL.±	0.1	0.2	0.3	0.5	0.8	1.2