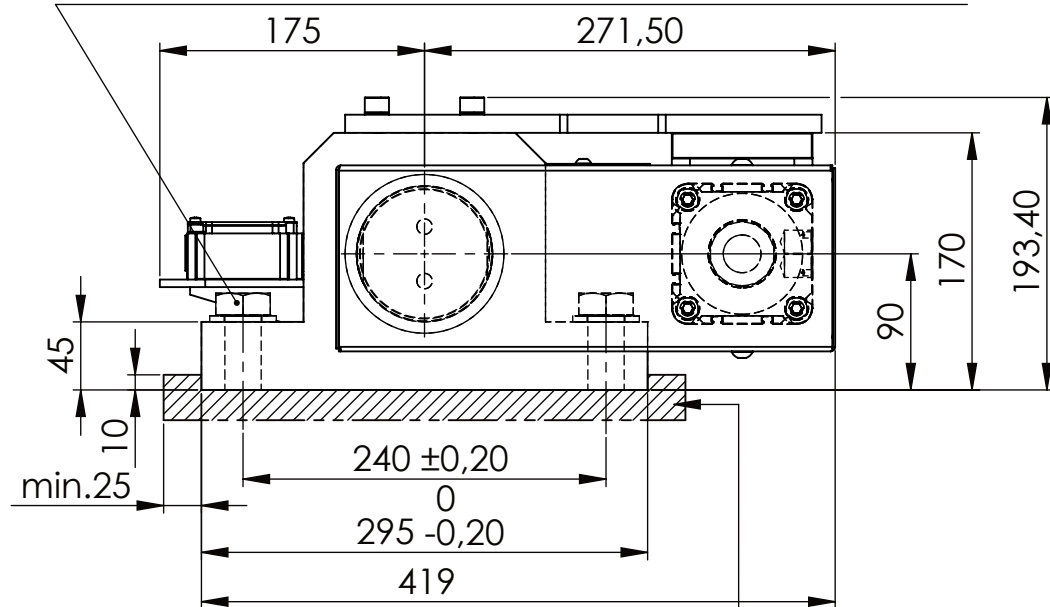


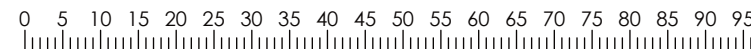
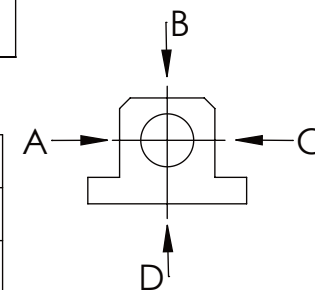
Hexagon Screw DIN 931/DIN EN ISO 4014-M24x90- 8.8, Ma=760Nm, Washer DIN 125/DIN EN ISO 7089 -A25, retain with Loctite or similar



please observe the fivefold security during welding of the Retaining plate



A B C	D
F all. 130.000 N	30.000 N
under static load	



TYPE OF DOKUMENT: DATA SHEET

WEIGHT [KG]: 71.01

PROJECTION

SAFETY NOTE  
DIN ISO 16016:2007-12  
Buhl Maschinenbau e.K.  
Carl-Zeiss-Str. 2  
71065 Sindelfingen

DATE  
13.08.15  
NAME  
G.Velleuer  
APP.  
13.08.15  
W.Buhl

DESIGNATION  
SAFETY LOCKING  
ADDITIONAL DESIGNATION  
SA 90P  
DRAWING-NO.:  
01-SA 90 P 04-05

FROM	TO	TOL.±	6	30	120	400	1000	2000	4000
0.1	0.2	0.3	0.5	0.8	1.2	2.0			

BUHL  
Buhl Maschinenbau e.K.  
Sindelfingen

SCALE  
1:5  
REV.  
0